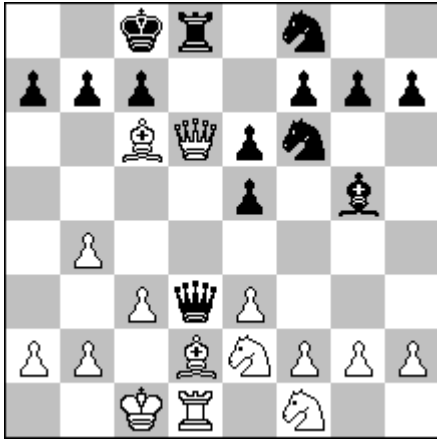


RETRO No. 1

Marek Kolčák
Die Schwalbe 2018



SPG 23.0 (15+14)

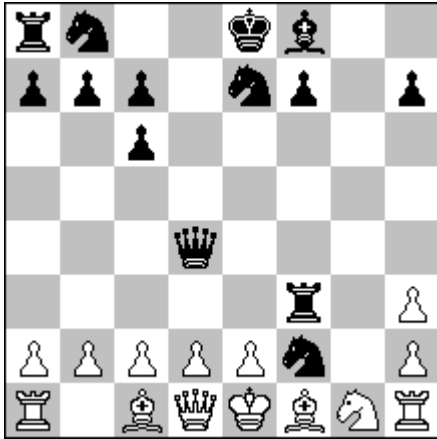
1.e3 e5 2.Qe2 Be7 3.Qa6 Bg5 4.Bb5 Sf6 5.Se2 0-0 6.0-0 Re8 7.Rd1 Re6 8.Kf1 Rc6
9.Ke1 Rc3 10.dxc3 Kf8 11.Rd6 Ke7 12.Re6+ dxe6 13.Sd2 Bd7 14.Sf1 Bc6 15.Bd2
Bd5 16.Kd1 Bb3 17.cxb3 Sd7 18.Kc2 Sf8 19.Rd1 Qd3+ 20.Kc1 Re8 21.b4 Kd8
22.Qd6+ Kc8 23.Bc6 Rd8

Black & white real castling short and than fictive castling long.

RETRO No. 2

Marek Kolčák

14th-15th Place 10th WCCT



SPG 15.5 C+ (14+14)

1.Sc3 g5 2.Sd5 g4 3.Sxe7 g3 4.Sc6 dxc6 5.Sf3 Bh3 6.gxh3 Se7 7.Bg2 Rg8 8.0-0
gxf2+ 9.Kh1 Rg3 10.Re1 f1S 11.Kg1 Se3 12.Kf2 Qd4 13.Rh1 Sg4+ 14.Ke1 Sf2
15.Sg1 Rf3 16.Bf1

Double exchange Ke1↔Rh1

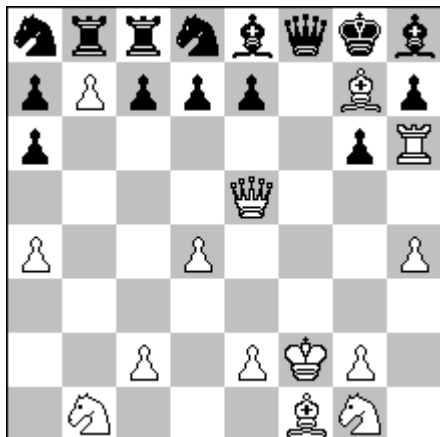
Return Bf1, Sg1

Hidden castling

RETRO No. 3

Marek Kolčák

Šachová skladba 2018



SPG 21.0 C+ (14+15)

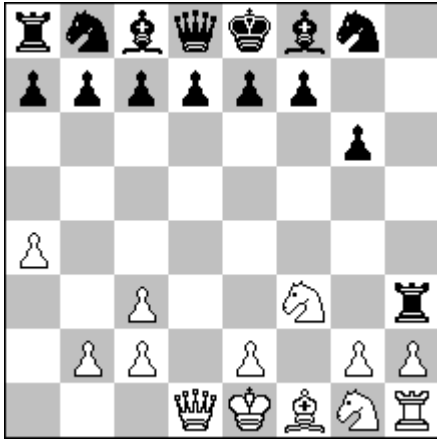
1.h4 Sf6 2.Rh3 Sd5 3.Ra3 Sb6 4.Ra6 bxa6 5.a4 Bb7 6.Ra3 Sd5 7.Rf3 Sc6 8.Rxf7
Rc8 9.Rf6 Sa8 10.Rh6 g6 11.b4 Bg7 12.Bb2 0-0 13.Qc1 Bh8 14.Bg7 Rxf2 15.d4 Rf5
16.Qf4 Bf7 17.Kf2 Rb5 18.Qe5 Rb8 19.b5 Qf8 20.b6 Sd8 21.b7 Be8+

Cyclic Change Ra8, Bc8, Ke8, Bg8 (2 squares to right) and Sb8, Qd8, Bf8, Rh8 (2 squares to right).

RETRO No. 4

Marek Kolčák

Pravda 2018



SPG 12.0 C+ (13+15)

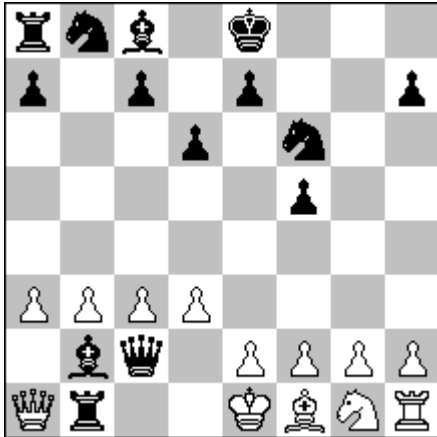
1.a4 g6 2.Ra3 Bg7 3.Rg3 Bc3 4.dxc3 h5 5.Kd2 h4 6.Ke3 hxg3 7.Bd2 gxf2 8.Be1
fxe1B 9.Sd2 Vh3+ 10.Sdf3 Bd2+ 11.Kf2 Bh6 12.Ke1 Bf8

Circuit of white king without capture, Pronkin Bf8

RETRO No. 5

Marek Kolčák

1.Command Champagne TT A, WCCC Belgrade 2016



SPG 13.0 C+ (14+14)

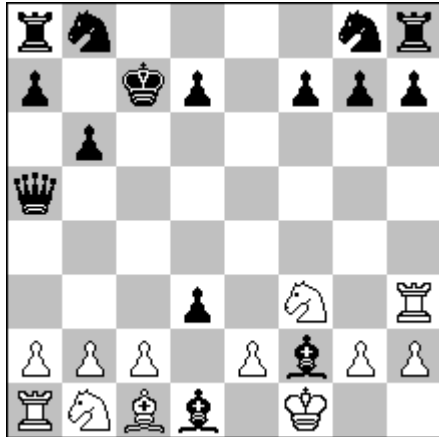
1:Sa3 b5 2.Sc4 b4 3.a3 b3 4.Ra2 bxa2 5.b3 d6 6.Bb2 Qd7 7.Bxg7 Qf5 8.Bxh8 Bg7
9.Qa1 Bb2 10.c3 Qc2 11.d3 f5 12.Sd2 Sf6 13.Sb1 axb1R+

Circuit of white Knight without capture, with capture of this Knight , Phoenix Rb1

RETRO No. 6

Marek Kolčák

1.Honorary Mention, WCCC Ohrid 2018



SPG 12.5 C+ (12+15)

1.f4 c5 2.f5 Qa5 3.f6 Kd8 4.fxe7+ Kc7 5.e8R b6 6.Re3 Ba6 7.Rh3 Bxe2 8.Sf3 Bxd1
9.Be2 c4 10.0-0 Bc5+ 11.d4 cxd3 e.p. 12.Rf2 Bxf2+ 13.Kf1

Valladao, Phoenix Rh3