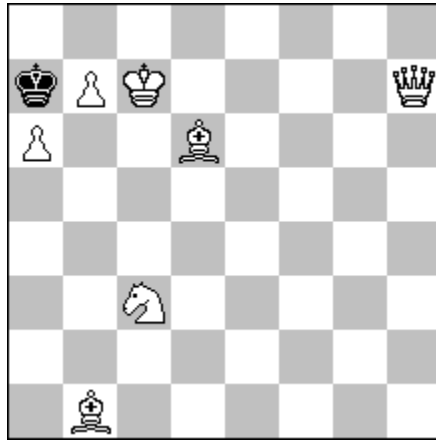


## Problem no 1 – Section H (Retros)

Vlaicu Crişan (Romania)

1<sup>st</sup> Prize [2<sup>nd</sup> Retroblog Theme Tournament 2017](#)



( 7 + 1 )

-6 & s#1

Proca Retractor

AntiCirce Cheylan

- 1.Ba2-b1 Ka8-a7
- 2.b6-b7+ Ka7-a8
- 3.Sb1-c3 Ka8-a7
- 4.Kc8-c7 Ka7-a8
- 5.Qh1-h7+ Ka8-a7
- 6.Se1:Pg2(>Sb1)+ &
- 1.Bg8 g:h1=Q(>Qd8)#

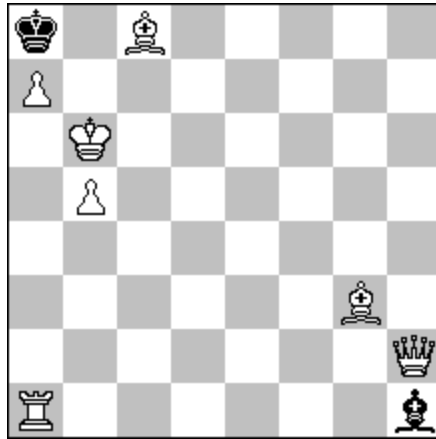
Theme: The forward play of Proca Retractor with AntiCirce Cheylan is a selfmate, where the mate is delivered by a pawn capturing on the 1<sup>st</sup> row (thus a specific promotion).

Judge's (Andreas Thoma) comments: Apart from the economical position, I like that nothing points to the theme. Initially the entire 8<sup>th</sup> row is empty; there are no black pieces that give a hint. Out of nowhere the black theme builder suddenly appears. The few pieces are used masterfully. Note the double use of the wBb1 – it prevents the check of the wPb6 on a2 and subsequently by occupying g8 it prevents the promotion dual. In almost every other position of the wQ there are cooks. The wBd6 is necessary to prevent Kb8 in the end.

## Problem no 2 – Section H (Retros)

Vlaicu Crişan (Romania)

1<sup>st</sup> Comm. [2<sup>nd</sup> Retroblog Theme Tournament 2017](#)



( 7 + 2 )

-4 & s#1

Proca Retractor

AntiCirce Cheylan

**1.Ra1:Bg1(>Ra1) g2-g1=B+**

**-2.Qg1-h2 h2-h1=B**

**-3.Ka6-b6 h3-h2**

**-4.Rg8:Bd8(>Ra1) &**

**1.B:h3(>Bf1) g:f1=B(>Bc8)#**

Theme: The forward play of Proca Retractor with AntiCirce Cheylan is a selfmate, where the mate is delivered by a pawn capturing on the 1<sup>st</sup> row (thus a specific promotion).

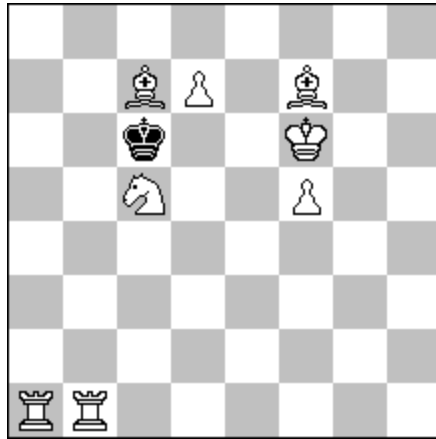
This composition shows also the Schnoebelen theme. The two black Bishops next to each other from the first rank after the 1<sup>st</sup> White retraction are echoed by the two black Bishops next to each other from the eighth rank after the forward play.

Judge's (Andreas Thoma) comments: The creation of two black thematic pawns with the most economical means. Also the promotion  $bBg1 \rightarrow bPg2 \rightarrow bB$  (on white squares) as well.

### Problem no 3 – Section H (Retros)

Vlaicu Crişan (Romania)

3<sup>rd</sup> Comm. [5<sup>th</sup> FIDE World Cup in Composing 2017](#)



( 8 + 1 )

-2 & s#1

Proca Retractor

AntiCirce Assassin

**-1.g7:Sf8=R(>Ra1, -bBa1) a2-a1=B+**

**-2.Be5-c7 &**

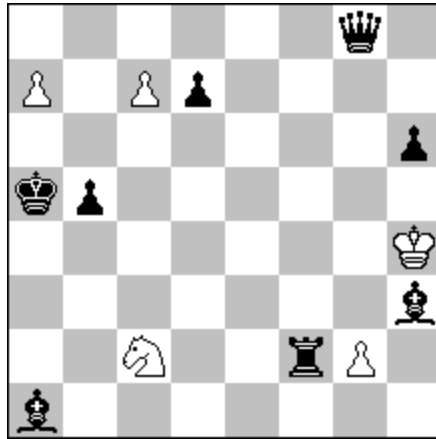
**1.d8=S+ a:b1=Q(>Qd8, -wSd8)#**

Judge's (Kostas Prentos) comments: Two Schoebelen promotions (the bB in retro play and the wS in forward play) combined with mixed AUW (wR, bB in retro play and wS, bQ in forward play). Although a fairy Schoebelen is usually much easier to achieve than an orthodox one, I enjoyed this problem. Both the Schoebelen and AUW elements are splendidly balanced between the retro and forward play. A lovely find!

## Problem no 4 – Section H (Retros)

Vlaicu Crişan (Romania)

3<sup>rd</sup> HM. [6<sup>th</sup> FIDE World Cup in Composing 2018](#)



( 5 + 8 )

-7 & #1

Proca Retractor

AntiCirce Assassin

- 1.h5:Pg5(>Pg2) ep. g7-g5
- 2.Kg5-h4 h7-h6+
- 3.Kf5-g5! f4:Pg4(>Pg7, -bRg7)++ ep.
- 4.g2-g4 Rg4-g7+
- 5.Ke5-f5! e4:Pd4(>Pd7, -bRd7)++ ep.
- 6.d2-d4 Rd4-d7+
- 7.c5:Pd5(>d2, -wRd2) &
- 1.R:d4(>Ra1, -bBa1)#

Note: 4... c4:Pd4 ep.+?? is illegal because of the opposition wPc7 – bPc4 which is not permitted in AntiCirce; 4... a2-a1=B+?? analogously is illegal because of the opposition wPa7 – bPa2.

First rendering and most economical presentation of White & Black double en passant capture in Proca Retractor AntiCirce Assassin. Here the order of en passant captures is also new: White – Black – Black – White. All the other examples of this difficult theme can be seen in the [article](#) I have written some years ago.

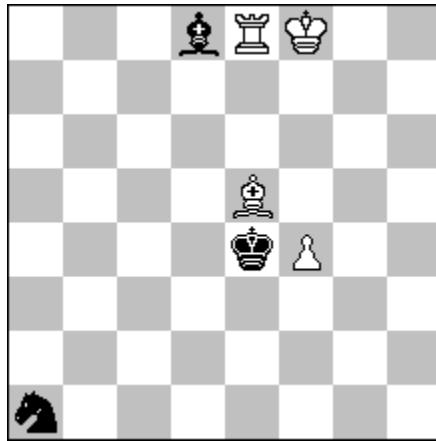
Judge's (Hans Gruber) comments: An entertaining AntiCirce Assassin retractor adventure – presenting a dense and ambitious programme: two white and two black en passant capture retractions! Three of them make use of the fairy specific feature that a second piece can be uncaptured in a move by the rebirth of the capturing piece. Two black rooks and one white rook thus magically appear on the board. Against its will, the black side is forced to uncapture rooks in order to be able to continue retracting after the (forced) retraction of the white pawn double step. Very appropriately, the final forward move also captures two black pieces. The mating move is played by a piece that appears only in White's last move.

## Problem no 5 – Section H (Retros)

Vlaicu Crişan (Romania)

ACI-8 [ChessProblems.ca](http://ChessProblems.ca) Bulletin 15/2018

Dedicated to Frank Moralee



( 4 + 3 )

-7 & s#1

Proca Retractor  
AntiCirce Assassin

- 1.e7-e8=R!! Ba5(b6)-d8+
- 2.Ke8-f8 Kd3-e4+
- 3.Bc3-e5 Ke2-e3+
- 4.f2-f4 Kd1-e2
- 5.Kf8-e8 Bc7-a5(b6)+
- 6.e5:Rf6(>Pf2, -wPf2) Rd6-f6+
- 7.g6:Pf7(>Pf2, -wRf2) &
- 1.Rd2+ R:d2(>Rh8)#

Matreshka theme: more than two pieces appear on the same square during the retro play.

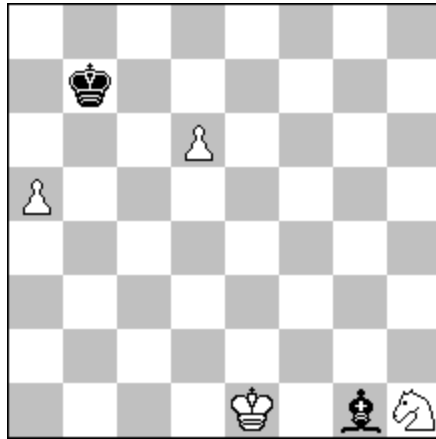
After an introductory play featuring an unpromotion, three Matreshka dolls appear on f2: a white Pawn, then another white Pawn, and finally a white Rook (not a white Queen, as it will be an illegal self-check – the black King occupies the rebirth square of the white Queen). Frank's help was invaluable in the assessment of the soundness of this version, as many previous attempts were cooked, hence the dedication.

The final position, in which a black uncaptured piece delivers mate by capturing a white assassinated piece, is very hard to discover. In the forward play, c1 is controlled indirectly by wBc3 threatening bSa1, while g7 is controlled by bPf7 threatening wPg6. This composition shows that strategically deep specific AntiCirce Assassin effects can be shown even in deceptively simple positions.

## Problem no 6 – Section H (Retros)

Vlaicu Crişan (Romania)

R451. Probleemblad 2017 (correction)



( 4 + 2 )

-4 & s#1

Proca Retractor

AntiCirce Assassin

**-1.Ke7:Rd7(>Ke1, -wQe1) Rd8-d7+**

**-2.Kf8-e7 Rd7-d8+**

**-3.Qe3-e1 g2-g1=B+**

**-4.Qe8-e3 &**

**1.Qa8+ g:h1=R(Ra8, -wQa8)#**

Please note that, contrary to ordinary AntiCirce, 2.Kf7?? is not possible in AntiCirce Assassin as Black can still play 2... R:f7(Ra8, -bRa8)!

Here we can see several specific effects in action. The first is the passive suicide of the white Queen after the 1<sup>st</sup> White retraction – an effect similar with those seen before in Proca Retractors with Circe Assassin. Another specific effect is the unusual check after the 3<sup>rd</sup> White retraction: the white King placed on f8 is in check from the black dark-squared Bishop. The most striking is undoubtedly the annihilation of two white pieces in the forward play by the promoted Rook.