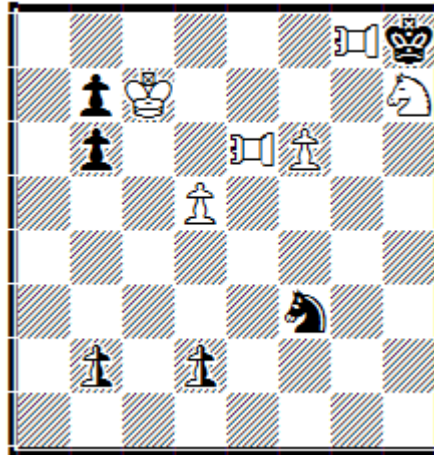


ENTRIES FOR THE WCCI 2016-18

Entry 1.

K.Seetharaman (India)

The Problemist, November 2018.



HS#2 (b) WKd7 (6+4+2)
Antircirce

g8, e6: Pao

b2, d2: Neutral Pawn

a) Diagram

1.PAb8 (PAa8?) b1=nQ (d1=nQ?) 2.PAe8+ (Sf8+?) nQxh7[nQh7->d8] #
1.PAa8?..... 2. PAe8+? Sxd2! (Sb8)!

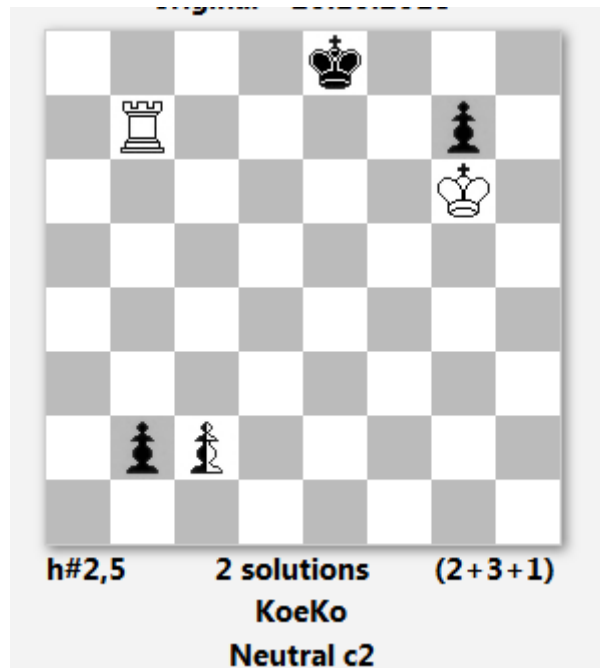
b) wKc7-->d7

1.PAc8 (PAb8?) d1=nQ (b1=nQ?) 2. Sf8+ (PAe8+?) nQxd5[nQd5->d8] #
1.PAb8? 2...nQxd5 (nQd8) 3.Kxd8! (Ke1)!

Critical moves, Anti-batteries, Mate with neutral queen & intricate dual avoidance.

Entry 2

K.Seetharaman (India)
Julis Fairies October 2018 (Problem 1333)



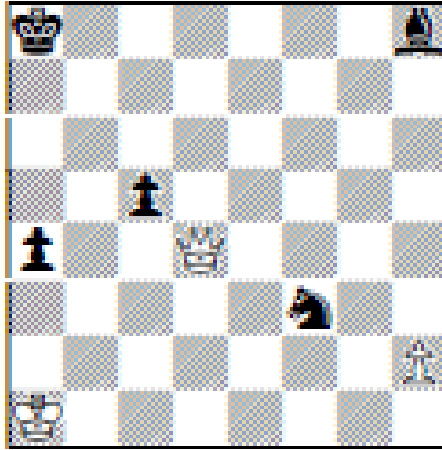
1...Kf6 2.c1=nR nRc8 3.nRb8 Ke7#

1...Re7 2.c1=nB nBg5 3.Kf8 Re8#

Miniature, minor promotions.

Entry no.3

K.Seetharaman (India)
StrateGems, October 2017



h#2 2 solutions (3+5)
KoBul Kings

1.Sxh2 Qxh8[a8=rB] + 2.rBa8-h1 Qxh2[h1=rS] #

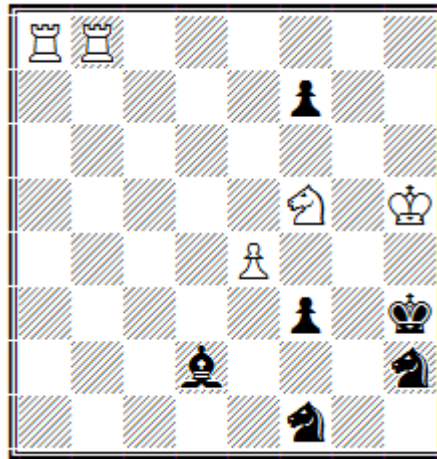
1.Sxd4[a1=rQ] rQa1-h1 + 2.Sc6 rQh1*c6[a8=rS] #

Corner-to-corner plays. King mated in opposite corners.

Entry No.4

K.Seetharaman

The Problemist January 2016



HS#4 (5+6)

1. Rg8 f2 2.Rg1 fg=Q 3.Rg8 Qc5 4.Rg3+ Sxg3#

Double Bristol on bent line. Pinmate.