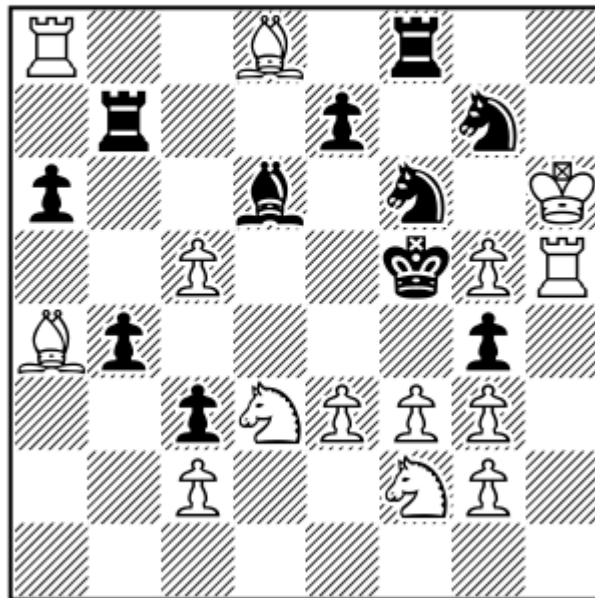


No. 1

S N Ravi Shankar
(Dedicated to Chris Tylor)
The Problemist, 2016



#30 All-in Chess

14+11

It is easier to follow the side lines, if the main line is seen first.

(Not 1. fxg4+? Sxg4. Nor 1. gxf6+? Kxf6)

1.e4+! Ke6

(1 ... Sxe4? 2. fxg4+ Ke6 3. Kd7+ Rb5 4. Rb6+ Rc6 5. Rc7+ Bb3 6. Ke6+ Ba4 7. Kf5#, 1 ...e5?
2.gxf6+ as in text mates on 25th move)

2. Kd7+ Rb5 3. Rb6+ Rc6 4. Rc7+ Bb3 5. Ke6+ Ba4

(5...Sd5? 6.Kf5+ e5 7.fxg4+ Ke6 8.Sf4+! Ba4 9.Kd7+ Rc6 10.Rb6+ Rb5 11.Rb7+ Bb3 12.Ke6+
Sd5/Ba4 13.Kf5#)

6.Kf5+ e5 7. gxf6+!

(Again not 7.fxg4+? because of 7...Sxg4. If now 7...Sxh5, then 8.fxg4+ as in text, mates quicker)

7...Ke6 8.Kd7+ Rc6 9.Rb6+ Rb5 10. Rb7+ Bb3 11. Ke6+ Ba4 12. Kf5+ Sxh5

(12 ... R any? allows mate on the 24th move, as black will not have the move 24 ... gxh5 in the
main line)

13.fxg4+ Ke6 14. Kd7+ Rb5 15.Rb6+ Rc6 16.Rc7+ Bb3 17.Ke6+ Ba4 18.Kf5+ g5

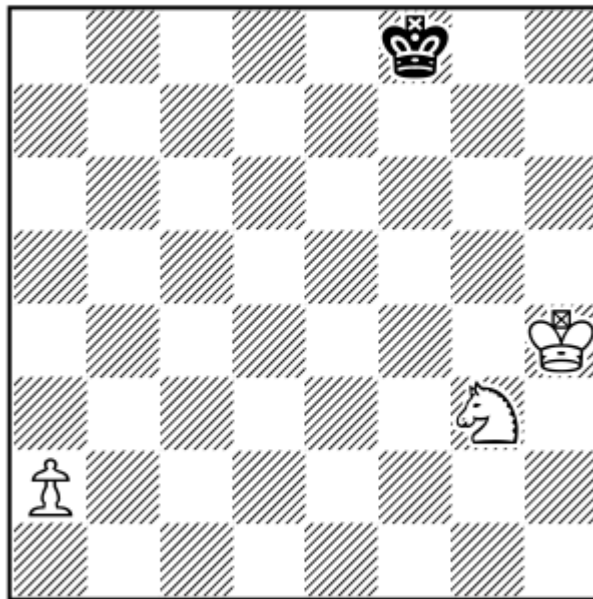
(or 18 ... gxh5 19.g4+ as in text)

**19.g4+ Ke6 20. Kd7+ Rc6 21.Rb6+ Rb5 22.Rb7+ Bb3 23.Ke6+ Ba4 24.Kf5+ gxh5 25.g4+ Ke6
26. Kd7+ Rb5 27. Rb6+ 28. Rc6 Rc7+ Bb3 29. Ke6+ Ba4 30.Kf5#.**

No. 2

S N Ravi Shankar

Phenix, 2016



Ser-h=28 2 solutions C+ 3+1

PWC

a)

1.Ke7 2.Kd6 3.Kc5 4.Kb4 5.Ka3 6.Kxa2[+wPa3] 7.Kb3 8.Ka4 9.Kxa3[+wPa4] 10.Kb4 11.Ka5
12.Kxa4[+wPa5] 13.Kb5 14.Ka6 15.Kxa5[+wPa6] 16.Kb6 17.Ka7 18.Kxa6[+wPa7] 19.Kb7
20.Ka8 21.Kxa7[+wPa8=B] 22.Kb6 23.Kc5 24.Kd4 25.Ke3 26.Kf2 27.Kg1 28.Kh2 Se2 =

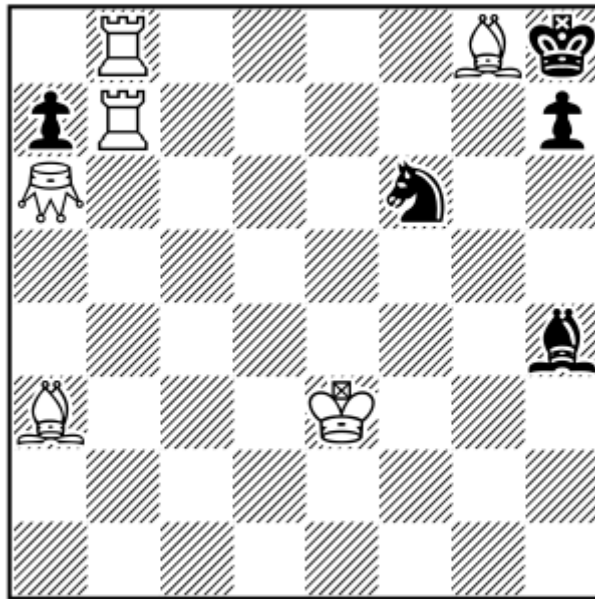
b)

1.Ke7 2.Kd6 3.Kc5 4.Kb4 5.Ka3 6.Kxa2[+wPa3] 7.Kb3 8.Kxa3[+wPb3] 9.Kb4
10.Kxb3[+wPb4] 11.Kc4 12.Kxb4[+wPc4] 13.Kc5 14.Kxc4[+wPc5] 15.Kd5 16.Kxc5[+wPd5]
17.Kd6 18.Kxd5[+wPd6] 19.Ke6 20.Kxd6[+wPe6] 21.Ke7 22.Kxe6[+wPe7] 23.Kf7
24.Kxe7[+wPf7] 25.Kf8 26.Kxf7[+wPf8=S] 27.Kg7 28.Kh6 Sh5 =

No. 3

S N Ravi Shankar

*Special Prize, Die Schwalbe,
2016*



#28 All-in Chess

6+5

a6: Grasshopper

It is easier to follow the sidelines, if the main line is seen first.

1. Kxg8+

(1. Ba2+? Gc8 (Not 1 ... Bf8? 2.Bg7#)2. Ga8+ Bg8! 3. Bb3+ Gc8 4. Ga6+ Bg8 and white has not made any progress. Also after 1. Ba2+? Se8 as in text, defeats because black has 9...Bg8!)

1 ... Se8 2. Sd6+!

[2. Sg7+? Bd8 3.Bf6+ {or 3.Ba5+ Se8 4.Sd6+ (4.Sf6+? Bd8 5.Be7 Bf8!and the two pieces will interpose alternatively) Bd8 5.Bh4+ Sc8! etc, mates in 31} 3...Se8 4.Sd6+ Sc8! mates in 30]

2 ... Sc8! {2 ... Bd8? 3. Ba5+ Se8 (3 ... Sc8 4.Sb6#) 4. Sg7+! as in text, mates in 25 moves.}

3. Sb6+ Bd8 4. Bf6+ Sc8 5.Sd6+ Bd8 (5 ... Se8? 6. Sg7+ as in text, mates in 27 moves)

6. Ba5+ Se8! (6 ... Sc8 5.Sb6#)

7. Sg7+! Bd8 8.Bh4+ Sd8 9.Sf6+

This position is identical to the one after white's first move. But, black cannot play 9 ...Sd8 now.

9 ... Gc8 10.Gh8+ Se8 (10 ... Gf8? 11. Kxf8#)

11.Sd6+! Sc8! 12.Sb6+ Bd8 13.Bf6+ Sc8 14.Sd6+ Bd8 15.Ba5+! Se8! 16.Sg7+! Bd8 17.Bh4+ Se8 18.Sf6+ Now, this position is identical to the one after white's 10th move.

18 ... Bf8 (18 ... Gf8? 19. Kxf8#)

19.Kxf8+ Se8 20.Sd6+! Sc8! 21.Sb6+ Bd8 22.Bf6+ Sc8 23.Sd6+ Bd8 24.Ba5+! Se8! 25. Sg7+!

Bd8 26.Bh4+ Se8 27.Sf6+ Again, this position is identical to the one after White's 19th move.

27 ... Gd8 28. Kxd8#.

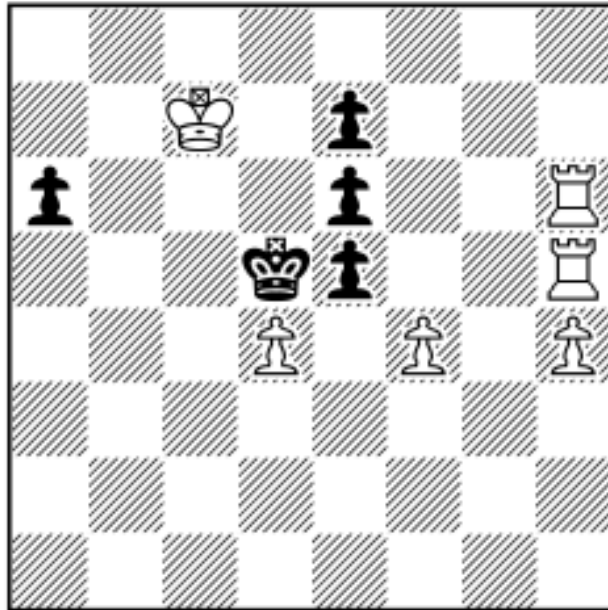
Note:

1. If Black plays Bf8 on moves 1 to 17, white plays Kxf8 and continues as in the main line.
2. If Black plays Gc8 on moves 1 to 8, white plays Gh8 and continues as in the main line.

No. 4

S N Ravi Shankar

Phenix, 2016



#15 All-in Chess

6+5

1. exf4+!

(1. e4+?/exd4+? f5 2. fxe6+ Kxd4/Ke4 3. Ke5+/ Kf5+ Kf4 3. Kg5+ Kg4 will lead no where.)

1 ... Kc4! (1 ... Kxd4+? 2. Ke5+! Ke4 3.Kf5+ Kg4 4. Kg5#)

2. Kb5+ Ka4

(Not 2 ... d5? 3.dxe6+! Ka4 4.Ka5+ Kb4 5.Kc5+ Kc4 6.Kd5+ Kd4 7.Ke5+ Ke4 8.Kf5+ Kg4 9.Kg5#. Nor 2...Kb4 3.Kc5+ Kc4 4. Kd5+ etc. as in text, mates in 14 moves.)

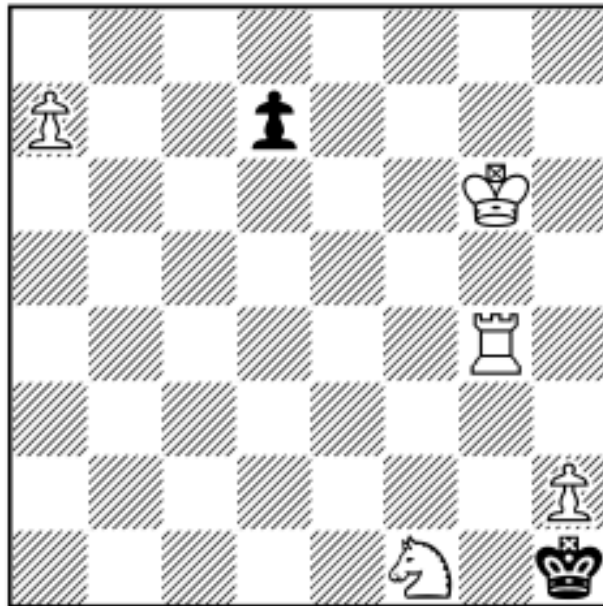
3. Ka5+ Kb4 4. Kc5+ Kc4 5. Kd5+ e5 6. exd4+!

(6. e4+? Kc4 7. Kb5+ d5! 8. d6+ e5! reaching a dead end.)

6 ... Kc4 7. Kb5+ Ka4 8. Ka5+ Kb4 9. Kc5+ Kc4 10.Kd5+ e5 11. e4+! Kc4 12. Kb5+ Ka4 13. Ka5+ Kb4 14. Kc5+ Kc4 15. Kd5#

No. 5

S N Ravi Shankar
Die Schwalbe, 2016



#10 All-in Chess

5+2

It is easier to follow the side lines, if the main line is seen first.

With black Pawn on d7, white cannot mate by 1.a8=B+ Rg2! 2. Rg1+ Kxg1 3. Kh1+ because of 3 ... d5! 4.d4+ Kg1 and the bK escapes.

1. a8=B+! Rg2

(1... d5 2.d4+ Re4 (2...Rg2 3. Rg1+ Kxg1 4. Kh1#) 3.Rh4+! Kg1 4. Kxh2+ as in text mates in 8 moves.)

2. Rg5+! (2. Rg3+? Rf3 3. Rh3+ Kg1 4. Kxh2+ Kxh3!)

2 ... Rd5 3. Rh5+! Kg1 4. Kxh2+ Kg1 5. Kh1+! Rd5 6. Rg5+ Rg2 7. Rg4+! (7. Rg3+/Rg1+?)

We have come to the position after white's first move, but without h2 pawn and a different last move!

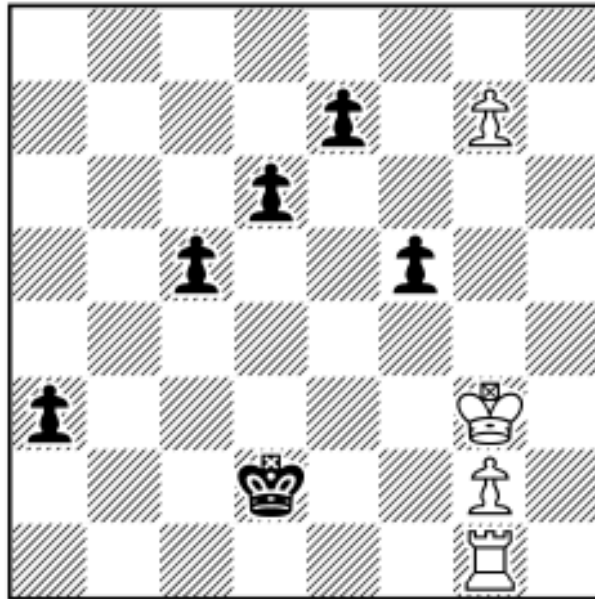
7... d5 (7 ... Re4 8. Rh4+! Kg1 9. Kh2#)

8. d4+ Re4 (8 ... Rg2 9. Rg1+ Kxg1 10.Kh1#)

9. Rh4+ Kg1 10. Kh2#

No. 6

S N Ravi Shankar
Probleemblad, 2016



#36 All in Chess

4+6

It is easier to follow the side lines, if the main line is seen first.

1.Kc1+!

(1. Kd1/Ke1? Ke2 2. Ke1/Kd1 Kd2, white has not made any progress.)

1 ... Kc2! 2. Kb1+ Kb2! 3. Ka1+ Ka2 4. g8=B+! Bh7 5. Kb1+!

(5. Ka1+? Kb2 6. Kc1+ Kd2 7. Ke1+ Ke2 8.Kd1+ Kd2 9.Kc1+ Kc2 10. Kb1+ Kb2 11. Ka1+ Ka2 as in text, but takes a move more to mate.)

5 ... Kc2! (5 ... Kb2? 6. Ka1+ Ka2 7. Bg8+ etc as in text, mating in 32 moves.)

6. Kd1+!

(6.Kc1+? Kd2 7. Ke1+ Ke2 8. Kd1+ Kd2 9. Kc1+ Kc2 10. Kb1+ etc. as in text, but, takes a move more.)

6 ... Ke2! (Not 6 ... Kd2? 6. Kc1+ Kc2 7. Kb1+ etc. as in text, mating in 35 moves.)

7. Ke1+ Kd2

(BK has come back to his initial square. This process is repeated 3 more times to exhaust the black pawn moves.)

8.Kc1+ Kc2 9.Kb1+ Kb2 10.Ka1+ Ka2 11.Bg8+ e6 12.e5+ Bh7 13.Kb1+ Kc2 14.Kd1+! Ke2!

15.Ke1+ Kd2

16.Kc1+ Kc2 17.Kb1+ Kb2 18.Ka1+ Ka2 19.Bg8+ d5 20.d4+ Bh7 21.Kb1+ Kc2 22.Kd1+! Ke2!

23.Ke1+ Kd2

24.Kc1+ Kc2 25.Kb1+ Kb2 26.Ka1+ Ka2 27.Bg8+ c4 28.c3+ Bh7 29.Kb1+ Kc2 30.Kd1+! Ke2!

31.Ke1+ Kd2

32.Kc1+ Kc2 33.Kb1+ Kb2 34.Ka1+ Ka2 35.Bg8+ Kb2 36.Ka1#