

Entry for WCCI 2016-18

Kjell Widlert

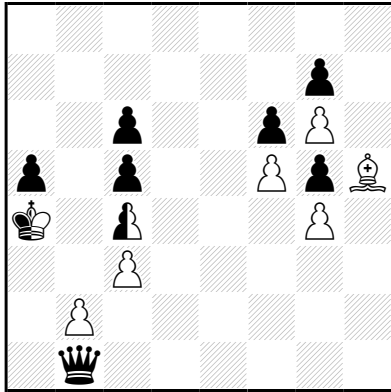
Sweden

kiell.widlert@comhem.se

1.

Kjell Widlert

idee & form October 2018



h#4,5

C+

1. - nKa3+ (nKxa5? nKb3?? nKb4??)

2. nKb3+ nKa4

3. Dxf5 gxf5

4. nKb3+ (4.g4? tempo? 5.g3 Ld1#; 4.g4? Lxg4? 5.tempo? Ld1#)

nKa3+

5. nKa4 Ld1#

Two successive round-trips by the nK in opposite directions, both motivated by the need to lose a tempo.

Entry for WCCI 2016-18

Kjell Widlert

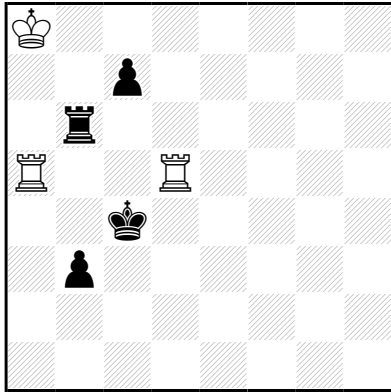
Sweden

kiell.widlert@comhem.se

2.

Kjell Widlert

Problembiad Oct-Dec 2018



h#5

C+

BackHome (Retour)

1. Tb4? Tac5 = no check, as White must play Tc5-a5 in the next move

1.c6 Ta7 2.Ta6 Tad7 3.Tb6 Ta5 4.c5 Td5 5.Tb4 Taxc5#

Exchange of squares (Platzwechsel) of the white rooks, in order to have the mating Tc5 come from d5 (which it cannot return to) instead of a5.

Entry for WCCI 2016-18

Kjell Widlert

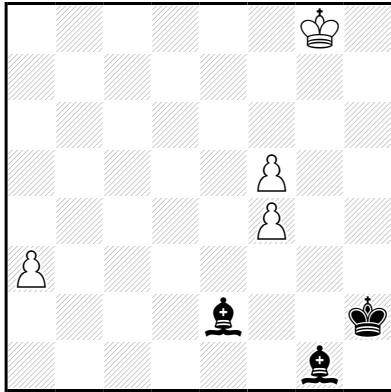
Sweden

kiell.widlert@comhem.se

3.

Kjell Widlert

feenschach Jul-Aug 2017



sh#20

C+

ABC (Alphabetic Chess)

Anti Take & Make

1.Lg4!

3.Lxa3(Ba4) 5.Lg5! (*Lg7?*)

7.Lxa4(Ba5) 9.Lg6!

11.Lxa5(Ba6) 13.Lg7!

14.Le8 16.Lxa6(Ba7) 18.Lh5! (*Lh1? Lh3? Lh7?*)

20.Lxa7(Ba8=D), Dg2#

The bishops take turns being the active black piece. When changing over, each bishop must place itself after the other bishop but before the bK (except the last time, 18.Lh5).

Entry for WCCI 2016-18

Kjell Widlert

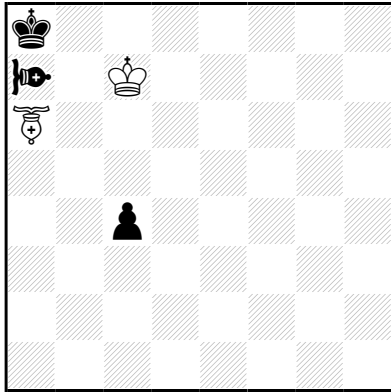
Sweden

kiell.widlert@comhem.se

4.

Kjell Widlert

feenschach Jul-Aug 2017



h#14 *

C+

ABC (Alphabetic Chess)

♞ = Alfil

♚ = Fers

1. – Fb7#

1.Ac5 Fb5 2.Ka7 Fxc4 3.Ka6 Fb3! 4.Kb5 Fc2 5.Kc4 Fd3+ 6.Kd4 Kd6 7.Ae7! Fe4 8.Ke3 Ke5 9.Kf2 Ff5
10.Ag5 Kf4 11.Kg1 Kg3 12.Kh1 Fe4 13.Ae3 Ff3 14.Ag1 Fg2#

The set mate is transported to the opposite corner in the solution (echo mate).

The F must first capture Pc4 so it doesn't have to move later (and to make way for the bK). Then it must quickly give up control of c4 so that the bK can pass, while staying before the wK in ABC order. Then it must place itself after f4 (i.e. on f5) so that Kf4-g3 becomes legal.

The A cannot move a7-c5-e3-g1 although it saves two moves, for then Ag1 must be played when the bK is on the f file and this prevents the bK from reaching h1. Ac5-e3-g5 fails because Ae3 blocks the way for the bKd4. Therefore, A-c5-e7-g5-e3-g1 is necessary.

Entry for WCCI 2016-18

Kjell Widlert

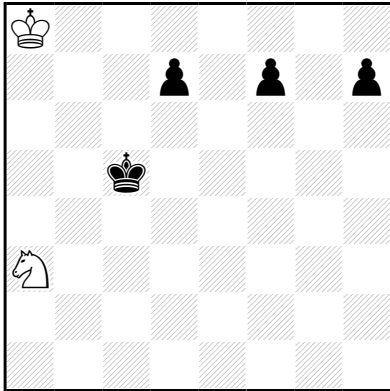
Sweden

kiell.widlert@comhem.se

5.

Kjell Widlert

1. Prize, Indrek Aunver-60 JT 2016 (Springaren)



sh#24 Use it or Lose it (3)

Use it or Lose it: if a piece – K excepted – has not moved within the indicated number of moves (here: 3), it becomes paralysed and loses all powers for good.

1.d5! 2.h5! 3.f6! 4.d4 5.h4 6.f5 7.d3 8.f4 9.h3 10.d2 11.f3 12.h2 13.d1=S 14.h1=T 15.f2 16.Sb2 17.Tb1 18.f1=L 19.Kb4 20.Kb3 21.Lc4 22.Ka2 23.Ka1 24.La2 Sc2#

18.f1D?

1.d5 2.h5 3.f5? ... 13.d1S 14.h1T 15.f1L 16.Sb2 17.Tb1??

1.d5 2.f5? 3.h5 ... 13.d1S 14.f1L 15.h1T 16.Sb2 17.Lc4 18.Tb1 19.Kb4 20.Ld5 (Kb3?) 21.Kb3 22.Ka2 23.Lc4 (Ka1?) 24.Ka1 25.La2

To avoid paralysis of the pawns, they must move alternately. Slow excelsior by Pf7.

If Black plays a normal excelsior by Pf7, the Lf1 will stand in the way of Th1. If Black tries to avoid that collision by changing the order of the moving pawns, the promoted L will be out of phase with the bK so that the move gained by f7-f5 will be more than lost again.

Entry for WCCI 2016-18

Kjell Widlert

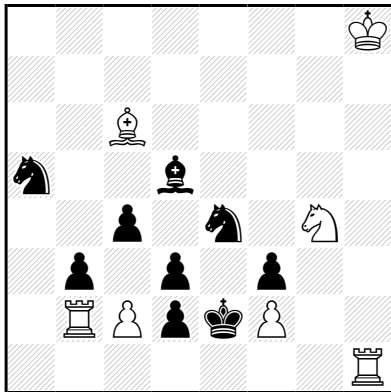
Sweden

kjell.widlert@comhem.se

6.

Kjell Widlert

feenschach Jul-Sep 2018



#5

C+

Diagram Circe

1.c3? [2.Te1#]

but 1. - Sxc3(Bc2)!

1.cxd3? [2.Te1#]

but 1. - cxd3(Bc2)! 2.cxb3 Lxb3(Bc2) 3.c3 Lc2!

1.cxb3! [2.Te1#] Sxb3(Bc2)

2.cxd3 [3.Te1#] cxd3(Bc2)

3.c4 [4.Te1#] Lxc4(Bc2)

4.c3 [5.Te1#] Sxc3(Bc2)

5.Lxf3#

Sequential albino.