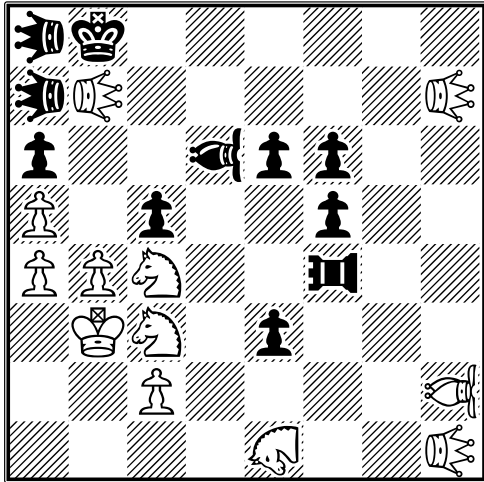


No.1:

Borislav Gadjanski, *SuperProblem Informal Tourney 2018*

1<sup>st</sup> - 2<sup>nd</sup> Prize



h2, d6: Vao (VA)  
 f4: Pao (PA)  
 a7, a8: Leo (LE)  
 e1: Nao (NA)  
 h1, h7, b7: HurdleColourChanging Leo (LEC)

FEN: (q3)k6/(q3)(Q1)5(Q1)/p2(b3)pp2/P1p2p2/PPN2(r3)2/1KN1p3/2P4(B3)/4(N3)2(Q1)

hs#4                      2 sols                      12+11 C+

Solutions:

1.LECb7-g7 LEa7-f7 2.LECh7:f7[g7=b]! ♔b8-a7  
 3.♘c4-a3 VAd6:b4! (VAd6~?) 4.LECh1-b7+ LECg7:b7[f7=b]#

1.LECb7-g2 LEa8-f3 2.LECh1:f3[g2=b]! ♔b8-a8  
 3.♘c3-a2 PAF4:b4! (PAf4~?) 4.LECh7-b7+ LECg2:b7[f3=b]#

*Paradoxical W/B – switchback: departure in the 1<sup>st</sup> and return in the very last (8<sup>th</sup>) half-move!  
 Perfect ODT (with hccLeos & Leos) + exchange of functions between four pairs of pieces: h1/h7,  
 a7/a8, c3/c4, f4/d6.*

*Orthogonal and diagonal mixed Bristol with switchback and changing color.  
 Orthogonal and diagonal self-blocks by SS.*

*The h2-b8 diagonal must be opened by “removing” one of two black units. These units (Vao &  
 Pao) do it reciprocally with “Chinese hideways” on b4.*

*Mat (by double check) with hccLEOs, which are initially white.  
 All fairy pieces are Chinese.*

**Judge: Franz Pachl**

VA = Vao *Chinese Bishop*. Moves as Bishop, but captures only by hopping over a hurdle to any square beyond.

PA = Pao *Chinese Rook*. Moves as Rook, but captures only by hopping over a hurdle to any square beyond.

LE = Leo *Chinese Queen*. Moves as Queen, but captures only by hopping over a hurdle to any square beyond.

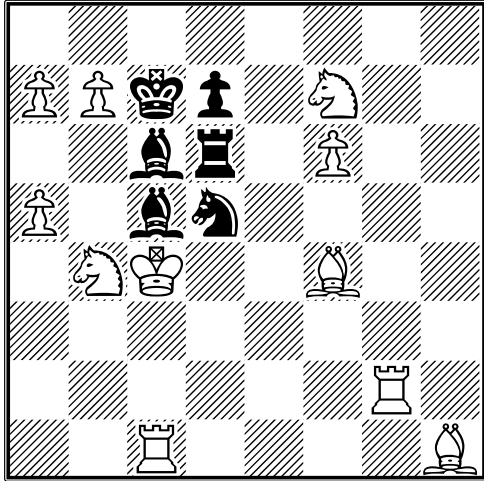
NA = Nao *Chinese Nightrider*. Moves as Nightrider, but captures only by hopping over a hurdle to any square beyond.

LEC = hccLE = HurdleColourChanging Leo *Chinese piece Leo* which changes the color of its hurdle, except if it's a King or a neutral piece.

No.2:

Borislav Gadjanski, *FIDE Olympic Tourney – Batumi 2018*

2<sup>nd</sup> Prize



FEN: 8/PPkp1N2/2br1P2/P1bn4/1NK2B2/8/6R1/2R4B

hs#2.5\* Take&MakeChess 11+6 C+

Set Play: 1... 2. ♔:d5→e7 ♙:g2→c2!! 3. ♘:c2→d3! (zzw) ♖:d3→e5#

Solution: 1... ♙:b4→c2!! 2. ♖:g:c2→e4! ♘b4! 3. ♔:b4→a6 (zzw) ♙:e4→c4#  
(2. ♖g:c2→a4? ♘b4 3. ♙xb4→a6 ♙:h1→c6)

Battery mates with double check after „zugzwang“, where both, the front and the rear, battery pieces are pinned (before and after the matting moves).

**BR diagonal Pelle-maneuver** in the set play, and **BB orthogonal Pelle-maneuver** in the solution. (the paradoxical movements of the black rook and the black bishop)

8 take&make moves = 4 in set play + 4 in solution!

Cyclical mutual capturing of Rg2, Bc6, Sb4 & Bc5:

**AxB, BxC, CxD, DxA** ( A=Bc6, B=Rc2, C=Bc5, D=Sb4)

**Bc6** takes the **Rg2** (B1 in set play, AxB),

**Rg2** takes the **Bc5** (W1 in solution on c2, BxC)

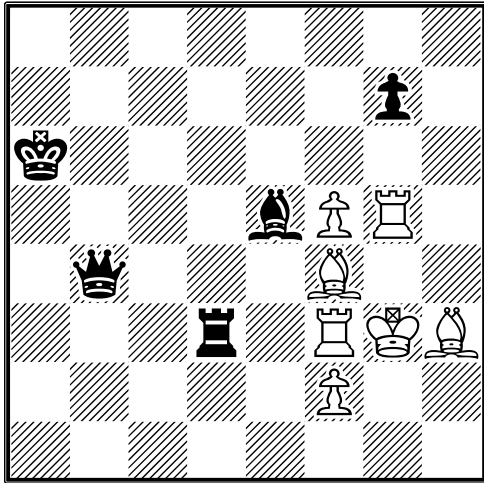
**Bc5** takes the **Sb4** (B1 in solution, CxD)

**Sb4** takes the **Bc6** (W2 in set play on c2, DxA)

Masked Half-pin on the c-line, with the BBs „take&make movements“ along this line. All moves of bishops are orthogonal, and all moves of rooks are diagonal!

Judge: Petko A. Petkov

No.3

Borislav Gadjanski, *The 6<sup>th</sup> FIDE World Cup in Composing, 2018*1<sup>st</sup> Prize

FEN: 8/6p1/k7/4bPR1/1q3B2/3r1RKB/5P2/8

**hs#5**

b) b4 = ♖

7+5 C+

Solutions:

a) 1. ♖g4 ♗b8 2. ♗c7 ♖d6 3. ♖b3 ♔b7 4. ♗b6 g5 5. ♗f1+ ♖d3#

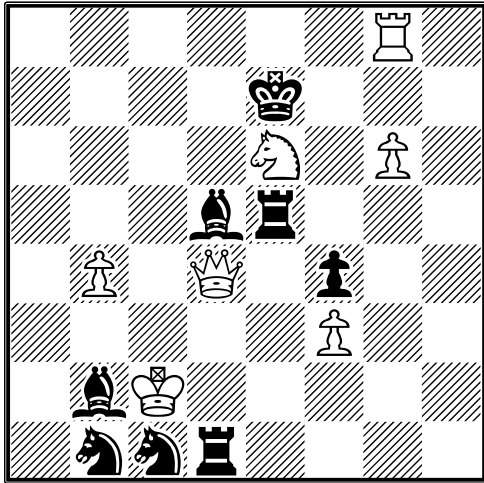
b) 1. ♗g2 ♖a3 2. ♖b3 ♗c3 3. ♗c7 ♖ba4 4. ♖b6+ ♔a5 5. f6+ ♗e5#

*Meredith, where three pairs of pieces mutually change their roles.**The two black pieces unpin the white pieces and form reciprocal batteries mating by switchback.**The white unpinned pieces alternatively play on b6, putting the needed guards on the black King's flights.**Changing the roles between the wRg5 and the wBh3: selfblock on W1, check on W5**Absolute orthogonal-diagonal correlation between solutions without capturing.**Judge: Vlaicu Crişan*

No.4

Borislav Gadjanski, *Phénix* (260/7560), 2016-04

*No award available*



FEN: 6R1/4k3/4N1P1/3br3/1P1Q1p2/5P2/1bK5/1nnr4

**hs#3.5**

**2 sols**

7+8 C+

Solutions:

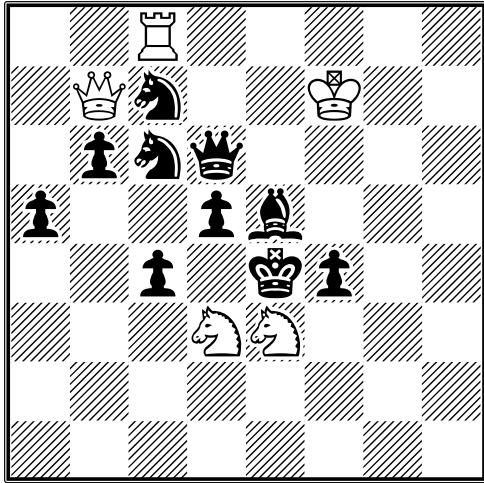
1... ♖ee1 2. ♘g7 ♙e6 3. ♚:b2 ♖d7 4. ♘f5+ ♙:f5#

1... ♙a2 2. ♘d8 ♖e6 3. ♚:d1 ♙f6 4. ♘c6+ ♖:c6#

*ODT with a complete orthogonal-diagonal analogy in solutions.*

*Play of wS like a "Siers", which can be called **anti-Siers** or **hs-Siers***

No.5

Borislav Gadjanski, 10<sup>th</sup> WCCT 2016-17 Group G2<sup>nd</sup> Place

FEN: 2R5/1Qn2K2/1pnq4/p2pb3/2p1kp2/3NN3/8/8

**h#2 Take&MakeChess 5+10 C+**  
**2 sols**

Solutions:

1. d4 ♔:c7→a8 2. ♔:e3→d5 ♖:c6→d8 #

1. ♖d4 ♔:c6→b8 2. ♔:d3→e5 ♖:c7→e8 #

*Chameleon echo pin-mates.**Self-blocks on d4 with FML effects. 3 pairs of thematic moves.**Destruction of unmoving black pieces with virtual thematic moves of the black king.*

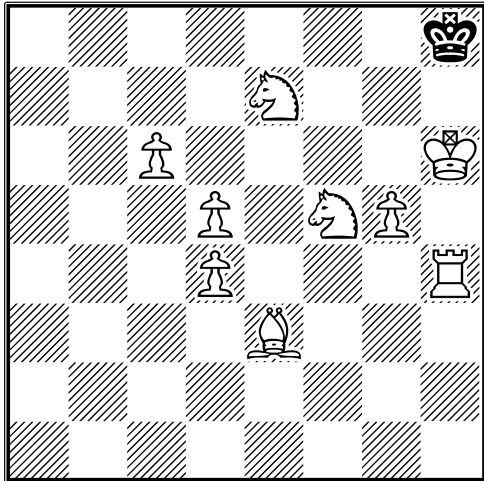
*White R-Q masked battery which mates once with a front and once with a rear piece.  
 (Partial reciprocal change of roles front and rear pieces: giving check and pinning BQ)*

*Judges: Countries BLR, BUL, JPN, SLO, SUI*

No.6

Borislav Gadjanski, *SuperProblem TT-216, 2018*

*Comm.*



FEN: 7k/4N3/2P4K/3P1NP1/3P3R/4B3/8/8

hs#4

Masand

9+1 C+

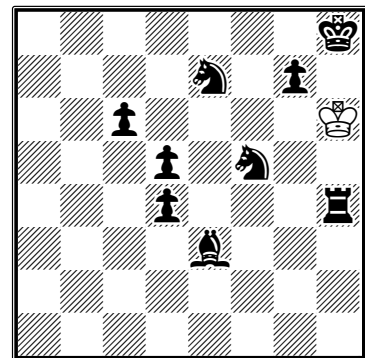
**Masand :**

*When a piece gives a direct check, all the pieces it controls or threatens (except the Kings) change colour. A Rook became white on a1 or h1, or black on a8 or h8, can castle*

Solutions:

1. ♘c8 ♔g8
2. ♘fe7 [d5=b][c6=b][c8=b]+ ♔h8
3. g6 ♘d6
4. g7+ ♘f5 [e3=b][d4=b][h4=b][e7=b][g7=b]#

Final position:



1. *Number of pieces:*  
*Diagram: 9+1, Final position: 1+9!*
2. *All pieces, except the kings, have changed color (white to black)!*
3. *Platzwechsel Se7 & Sf5, with changing color!*
4. *Mat with quadruple check!*
5. *Check by P from starting field!*
6. *The starting and finishing positions are almost the same (with the opposite colors), except for the Pg7, which came from g5.*
7. *Black Rex solus.*
8. *No capturing!*

*Judge: Petko A. Petkov*