

WCCI 2016-2018

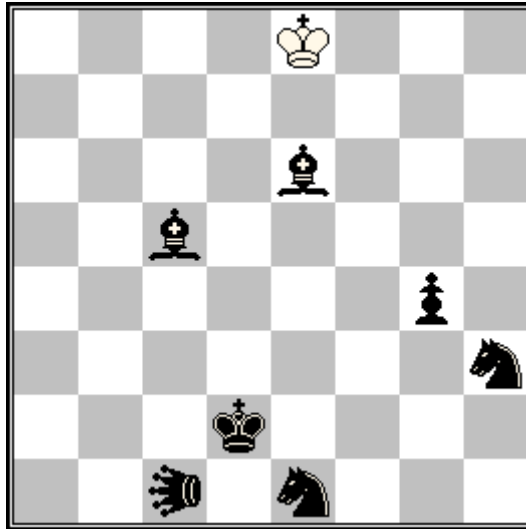
Entry No.1

Section G, Fairies

Krassimir Gandev 70JT, May 2016

4th Honorable Mention

Themis Argirakopoulos, Greece




h#4

2.1.1...

(1+7)

C+

 : Hurdle Color Changing Lion (hccLI)

Solutions 1.hccLIc1-c6[c5=w] Lc5-f2 2.hccLIc6-h6[e6=w] Le6xg4
3.hccLIh6-h1[h3=w] Sh3-g5 4.hccLIh1-c1[e1=w] Sg5-e4 #
1.hccLIc1-h1[e1=w] Se1-g2 2.hccLIh1-h6[h3=w] Sh3-f4
3.hccLIh6-c6[e6=w] Le6-b3 4.hccLIc6-c1[c5=w] Lc5-b4 #

Comments Clockwise and anti-clockwise Rundlauf of hurdle color changing lion, across the sides of c1-h1-h6-c6 square, Meredith


K


D


T


L


S


P


hccLI

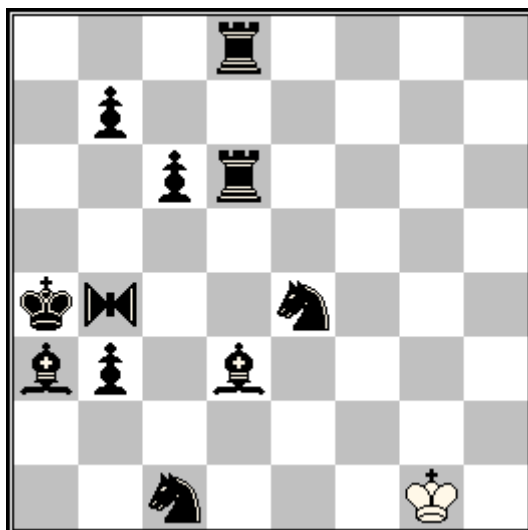
WCCI 2016-2018

Entry No.2
Section G, Fairies

Krassimir Gandev 70JT, May 2016

6th Prize

Themis Argirakopoulos, Greece



h#3

b) ♖a3→a5

(1+11)

c) ♜b3→a5

C+

♞ : Hurdle Color Changing Equihopper (hccEQ)

Solutions

a)

1.hccEQb4-h4[e4=w] Se4xd6 2.Ld3-e4 Sd6xb7
3.hccEQh4-b4[e4=w] Le4xc6 #

b) bLa3 →a5

1.hccEQb4-f8[d6=w] Td6xc6 2.Se4-d6 Tc6xc1
3.hccEQf8-b4[d6=w] Tc1-a1 #

c) bPb3 →a5

1.hccEQb4-f2[d3=w] Ld3-a6 2.Td6-d3 La6xb7
3.hccEQf2-b4[d3=w] Lb7xc6 #

Comments Triple switchback of black equihopper, Meredith

Equihopper : Piece moving like a (m,n)Leaper until it reaches an occupied square. Then, from that square, without changing direction, it makes a (m,n)Leaper leap.

A (m,n)Equihopper moves in the same way to capture or not to capture, the taken unit being on the arrival square.



K



D



T



L



S



P



hccEQ

WCCI 2016-2018

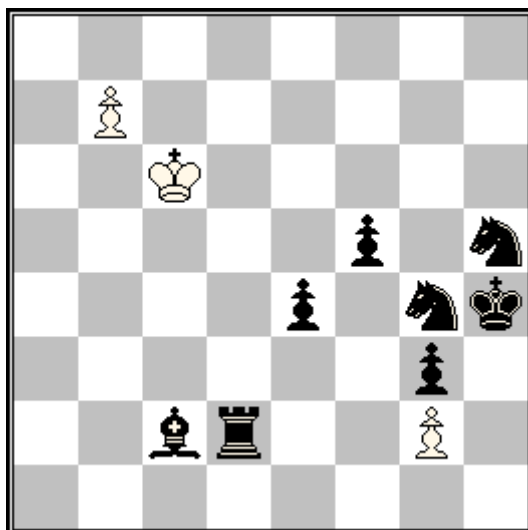
Entry No.3

Section G, Fairies

Superproblem TT-177, December 2016

2nd Prize

Themis Argirakopoulos, Greece



h#2

- b) Rotate 90°
 - c) Rotate 180°
 - d) Rotate 270°
- Circe

(3+8)
C+

Solutions

a)

1.Td2-d8 b7-b8=L 2.Td8xb8[+wLc1] Lc1-g5 #

b) rotate 90°

1.Tb5-g5 g7-g8=T 2.Tg5xg8[+wTh1] Th1xe1[+bSb8] #

c) rotate 180°

1.Te7-e8 b7-b8=D 2.Te8xb8[+wDd1] Dd1xa4[+bSg8] #

d) rotate 270°

1.Lg3-h4 g7-g8=S 2.Lh4-f6 Sg8xf6[+bLf8] #

Comments

AUW, Meredith



K



D



T



L



S



P

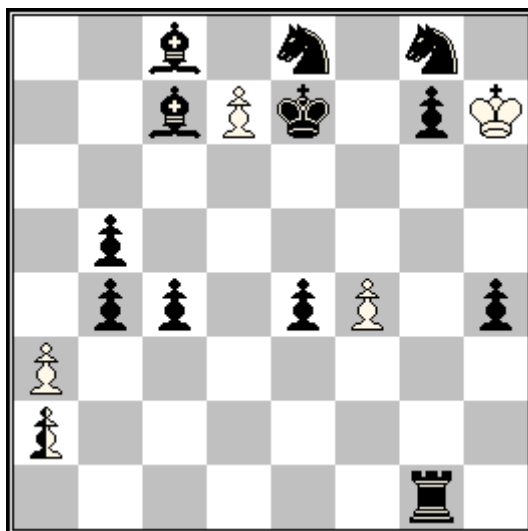
WCCI 2016-2018

Entry No.4
Section G, Fairies

F730, Problem Paradise 72, Vol.18 Oct-Dec 2015 (May 2016)

Award pending

Themis Argirakopoulos, Greece



h#2

b) ♖ f4→c6

(4+12+1)

c) ♜ g7→d6

C+

d) ♜ b4→f5

Back-to-Back

Solutions

a)

1.nPa2-a1=nD nDa1-f6 + 2.nDf6-c6 d7xe8=D #

b) wPf4 →c6

1.nPa2-a1=nT nTa1-f1 2.nTf1-f8 d7xe8=T #

c) bPg7 →d6

1.nPa2-a1=nL nLa1-g7 2.Lc7-d8 d7xe8=L #

d) bPb4 →f5

1.nPa2-a1=nS nSa1-c2 2.nSc2-b4 d7xe8=S #

Comments

Babson Task

Back-to-Back : When a white piece is just one rank above a black piece on the same file, they exchange their walk.

♔
K

♚
D

♖
T

♗
L

♘
S

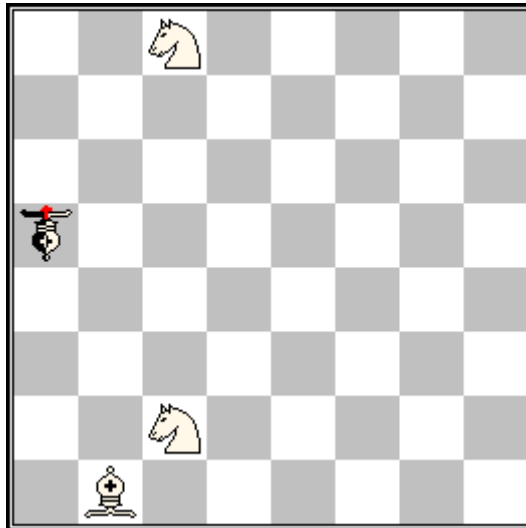
♙
P

WCCI 2016-2018

Entry No.5
Section G, Fairies

60th WCCC, 15th Romanian Tzuica, Fairy Section, August 2017

3rd Honorable Mention
Themis Argirakopoulos, Greece



hs#3

2.1.1...

(3+0+1)

Strict Circe

C+

Sentinelles Identiques

♠ : Neutral Royal Fers (nrFE)

Solutions

1.nrFEb4(+FEa5)+ nrFEc5(+FEb4)+ 2.nrFEd6(+FEc5)+
nrFEc7(+FEd6)+ 3.nrFE7b6(+FEc7)+ nrFE6xa5(FEa8;+FEb6) #
1.nrFEb6(+FEa5)+ nrFEc5(+FEb6)+ 2.nrFEd4(+FEc5)+
nrFEc3(+FEd4)+ 3.nrFE3b4(+FEc3)+ nrFE4xa5(FEa8;+FEb4) #

Comments

Six consecutive checks in Wenigsteiner, two Rundlaufs

Fers : (1,1) Leaper, moving like a bishop but only one square away.

Sentinelles Identiques: When a piece (Pawn excluded) leaves a square, it leaves a piece of the same nature and color unless 8 pieces of this nature and color are already on the board.

Strict Circe: Circe rebirths apply, but the capture is impossible if the captured unit can't be reborn.



K



D



T



L



S



P



nrFE

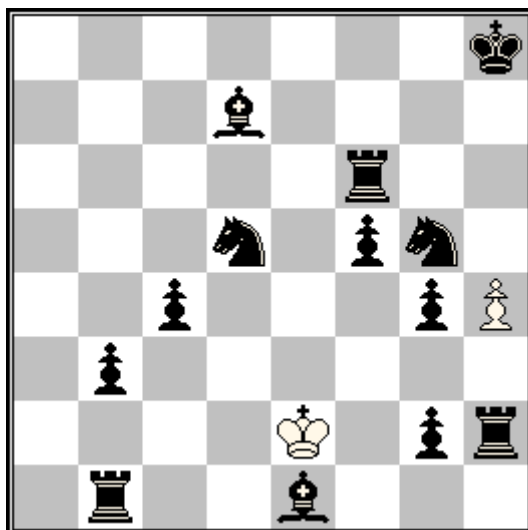
WCCI 2016-2018

Entry No.6
Section G, Fairies

Superproblem TT-216, December 2018

1st Honorable Mention

Themis Argirakopoulos, Greece



h#3

2.1.1...

(2+13)

C+

Masand

Solutions 1.Le1xh4 Ke2-d2 2.Sg5-f3[h2=w][h4=w] + Kd2-e2 3.Sd5-e7 Lh4xf6[e7=w] #
1.Le1-c3 Ke2-f2 2.Sg5-e4[c3=w][f6=w] + Kf2-e2 3.Ld7-e6 Tf6-h6[h4=b][e6=w] #

Comments Batteries creation by active play of black Bishop, acting as front and rear piece, switchback of white King, model mates.

Masand : When a piece gives a direct check, all the pieces it controls or threatens (except the Kings) change colour

