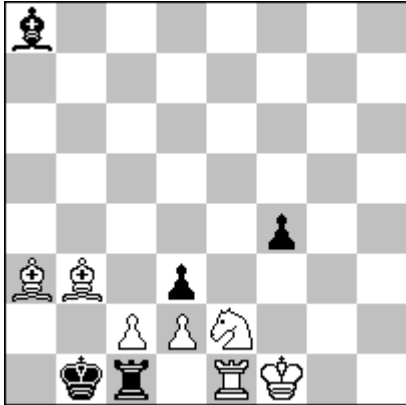


**G1. Karol Mlynka**, Slovakia (85101 Bratislava 5, Wolkrova 3; [karol.mlynka@pobox.sk](mailto:karol.mlynka@pobox.sk))

1st Prize (v) TT-193 SuperProblem 2017 = C+p



**HS#4** Duplex (7+5)

(TT-193 SP C 6.7.2017 - **version** in Final Award SP 7.8.2017)

**1.Sg3** Rd1 2.Bc1 R\*d2 3.Rd1 f\*g3 4.Ba3+ R\*d1#;

**1.Rd1** Sc1 2.R\*d2 Rd1 3.Bg2+ Ke1 4.Re2+ S\*e2#.

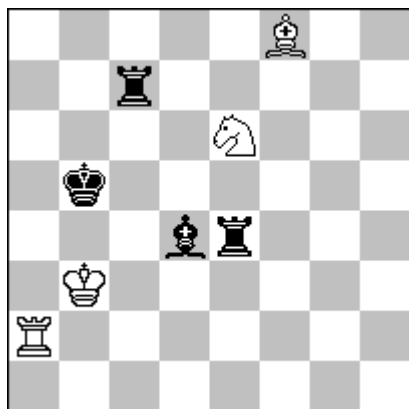
Change of function of moves. Battery creation. FML. Switchbacks.

C+ by Popeye WINDOWS-32Bit-Version 4.01

This version in Final award 7.8.2017: <https://yadi.sk/i/nhct4Rmm3LkEhM>

International web project SuperProblem <http://superproblem.ru>

**G2. Karol Mlynka**, Slovakia (85101 Bratislava 5, Wolkrova 3; [karol.mlynka@pobox.sk](mailto:karol.mlynka@pobox.sk))  
H.M. Gravure 2016 = C+p



**HS#3**      b) bBe4      (4+4)

(C 1.7.2016 - PA 30.8.2016; FA 12.9.2016)

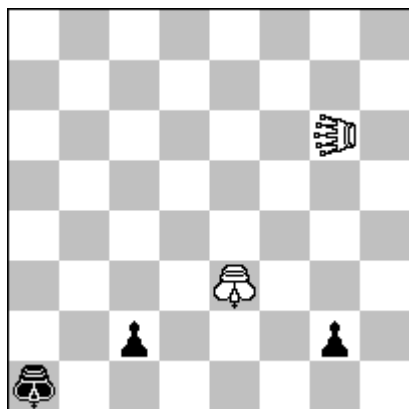
[http://www.selivanov.world/download/Awards/Drugie/2016/Gravure-2016%20\(awards\).pdf](http://www.selivanov.world/download/Awards/Drugie/2016/Gravure-2016%20(awards).pdf)

**a) 1.Bc5** Bc3 2.Ba7 Re3 3.Sd4+ B\*d4#;

**b) 1.Ra6** Rc4 2.Ba3 Bd5 3.Sc7+ R\*c7#.

Battery creations and battery mates with switchbacks in an aristocrat.

**G3. Karol Mlynka**, Slovakia (85101 Bratislava 5, Wolkrova 3; [karol.mlynka@pobox.sk](mailto:karol.mlynka@pobox.sk))  
 F3400 The Problemist 9, 2017 (no. 5) = C+p



**H=2** SI<sirene> g6 (2+3)  
 Supertransmuting Kings

**1.Kb1** SI\*g2-g1+ 2.Kd1=SI SI\*d1-c1=,  
**1.Kb2** SI\*c2-b1+ 2.Kf2=SI+ K\*f2-g1=SI=,  
**1.g1=Q+** K\*g1=Q+ 2.Kc1=Q Q\*c1=,  
**1.g1=SI+** Kc1=SI 2.Slb6 SI\*b6-a6=.

HotF in a Tanagra. Change of promotion. Two **Pressburger Kings**.

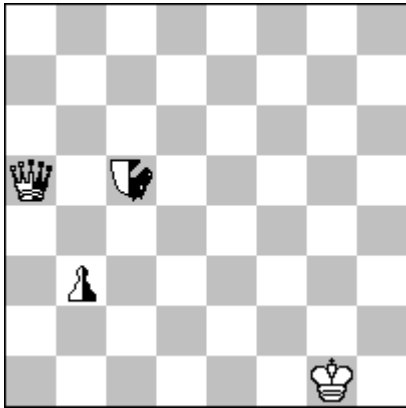
C+ by Popeye Windows-64Bit v4.75  
 Condition BlackSuperTransmutingKing WhiteSuperTransmutingKing  
 1.Ka1-b2 Slg6\*c2-b1 + 2.Kb2-f2=SI + Ke3\*f2-g1=SI =  
 1.Ka1-b1 Slg6\*g2-g1 + 2.Kb1-d1=SI Slg1\*d1-c1 =  
 1.g2-g1=Q + Ke3\*g1=Q + 2.Ka1-c1=Q Qg1\*c1 =  
 1.g2-g1=SI + Ke3-c1=SI 2.Slg1-b6 Slg6\*b6-a6 =

Definitions in F3400 The Problemist 9, 2017 (no.5):

**Supertransmuting Kings:** when a king is checked, it may only move in the manner of the unit checking it, and if it does so it transforms into a normal unit of that type and loses its susceptibility to check from then on.

**Siren (SI):** moves as a Q, captures (and checks) on Q lines by jumping over the unit to be captured and landing on the next square beyond, which must be empty.

**G4. Karol Mlynka, Slovakia** (85101 Bratislava 5, Wolkrova 3; [karol.mlynka@pobox.sk](mailto:karol.mlynka@pobox.sk))  
3rd Prize TT-204 SuperProblem 2018 = C+p



**HS#3** ParrainCirce (1+0+3)  
Take&MakeChess

neutral L<locust>a5, SS<spiralspringer>c5, P<pawn>b3

- b) nLa5→a2
- +c) nPb3→c4
- d) wKg1→h2
- +e) nPb3→f3
- f) nPb3→f4
- +g) nSSc5→a4
- h) nPb3→h3
- i) in d) nPb3→g2
- +j) nLa5→d7

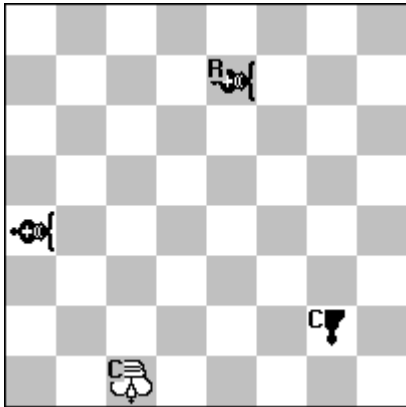
(TT-204 SuperProblem C 28.2.2018 – PA 25.8.2018; FA 4.9.2018; Judge J. Golha)

- a)** 1.Kf2 nL\*c5-b2+ 2.Kf1[+nSSc4] nSSe1 3.K\*e1-c6 nL\*b3-b5[+nSSe4]#
- b)** 1.Kf1 nSS\*b3-b4 2.Ke1[+nPa3] nSSd1 3.K\*d1-b6 nL\*a3-a5[+nSSd4]#
- c)** 1.nSSd7 nSSf2 2.nL\*f2-c2 nPc3[+nSSf1] 3.K\*f1-d6 nL\*c3-c5[+nSSf4]#
- d)** 1.Kg3 nL\*c5-a3 2.Kf3[+nSSb5] nSS\*b3-b4+ 3.nL\*b4-c1[+nPd1] nL\*d1-e2[+nSSd5]#
- e)** 1.nL\*c5-e3 nL\*f3-g4[+nSSe6] 2.nSSf8[+nPg5] nSSh1 3.K\*h1-f6 nL\*g5-g7[+nSSh4]#
- f)** 1.nL\*c5-f8 nL\*f4[+nSSc1]+ 2.Kg2[+nPf5] nSSg1 3.K\*g1-e6 nL\*f5-f7[+nSSg4]#
- g)** 1.nL\*a4-c4 nL\*f4-g5[+nSSe5] 2.nSSf7[+nPg6] nSSh2 3.K\*h2-f7 nL\*g6-g8[+nSSh5]#
- h)** 1.nSSc3 nL\*c3-h2 2.Kf1[+nSSb3] nSSe1 3.K\*e1-g6 nL\*h3-h5[+nSSe4]#
- i)** 1.nSSa2 nL\*a2-d3 2.Kh3[+nSSa3] nSS\*g2-g4 3.K\*g4-e5[+nPd4] nL\*d4-d6[+nSSg7]#
- j)** 1.nSSe6 nL\*e6-d2 2.Kh3[+nSSe7] nSS\*g2-g3 3.K\*g3-e4[+nPd3] nL\*d3-d5[+nSSg6]#

10-fold total chameleon-echo mates in a Wenigsteiner.

C+ by Popeye Windows-64Bit v4.79  
White Kg1  
Neutral La5 SSc5 Pb3  
Stipulation HS#3  
Condition ParrainCirce Take&MakeChess

**G5. Karol Mlynka, Slovakia** (85101 Bratislava 5, Wolkrova 3; [karol.mlynka@pobox.sk](mailto:karol.mlynka@pobox.sk))  
A94 Pressburger King 1.8.2016 = C+



**#2**            2 solutions    (1+3)  
UltraSchachZwang  
LB<bishop locust>a4  
royal=LB<bishop locust>e7  
chameleon=K<king>c1, P<pawn>g2  
White Supertransmuting King

1...cPg1=cQ+ **a** 2.cKc8=Q=rcS# **A**,  
1...cPg1=cR+ **b** 2.cKc7=R=rcQ# **B**;  
1.cKd1! zz. cPg1=cQ+ **a** 2.cKd5=Q=rcS# **C**,  
1...cPg1=cR+ **b** 2.cKd8=R=rcQ# **D**;  
1.cKb1! zz. cPg1=cQ+ **a** 2.cKf5=Q=rcS# **E**,  
1...cPg1=cR+ **b** 2.cK:b7=R=rcQ# **F**.

Zagoruiko 3x2 after promotions; Z-32-26. Wenigsteiner. Rex solus. Prototype of chameleon Pressburger King.

C+ by Popeye WINDOWS-32Bit-Version 4.01 & Popeye Windows-64Bit v4.73

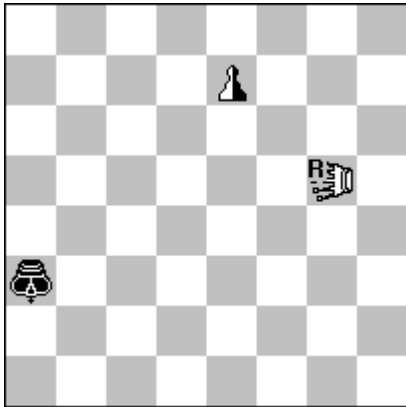
**Ultraschachzwang:** Black must check and White must play to ensure this is possible; otherwise this is stalemate.

**Supertransmuting King (Pressburger King):** when checked, a king must play as the unit or units giving check if possible, thereafter the king becomes an ordinary (non-royal unit) of this type permanently. If it is not possible to move as the checking unit, another piece may parry the check and the king does not change. If that is not possible, the king is mated. (S. Emmerson: A Glossary of Fairy Definitions, BCPS 2018)

(22) Ein supertransmutierender Chamäleonkönig agiert nach seiner Verwandlung und Entköniglichung als Chamäleon. Sagorujko Z-32-26 nach Umwandlungen. <http://www.wenigsteiner.de/wjp2016a.pdf>

- [http://problem64.beda.cz/silo/mlynka\\_pressburgerking\\_edition\\_2\\_2017.pdf](http://problem64.beda.cz/silo/mlynka_pressburgerking_edition_2_2017.pdf)

**G6. Karol Mlynka**, Slovakia (85101 Bratislava 5, Wolkrova 3; [karol.mlynka@pobox.sk](mailto:karol.mlynka@pobox.sk))  
2405 harmonie-aktiv 5, 2016 - no. 132



**H#2** 2.1.1.1 b) nPe7 (1+1+1)  
neutral=PP<reverse pawn>e7  
royal=L<locust>g5  
Supertransmuting King a3

- a) 1.nPPe8=nS **A** nSg7 **B** 2.Kb3 **C** rL\*g7-g8#,  
1.nPPe8=nB **D** nBb5 **E** 2.Kb4 **F** rL\*b5-a5#.
- b) 1.Kb3 **C** nPe8=nS **A** 2.nSg7 **B** rL\*g7-g8#,  
1.Kb4 **F** nPe8=nB **D** 2.nBb5 **E** rL\*b5-a5#.

2-fold cyclic play in Three-men-problem.

***Supertransmuting King (Pressburger King):** when checked, a king must play as the unit or units giving check if possible, thereafter the king becomes an ordinary (non-royal unit) of this type permanently. If it is not possible to move as the checking unit, another piece may parry the check and the king does not change. If that is not possible, the king is mated. (S. Emmerson: A Glossary of Fairy Definitions, BCPS 2018)*

***Reverse Pawn:** As P, but moves in the opposite direction for the side to which it belongs. Double step is possible from the enemy's 2nd rank, and promotion is on the side's 1st rank. (S. Emmerson: A Glossary of Fairy Definitions, BCPS 2018)*

C+ by Popeye Windows-64Bit v4.73  
White royal Lg5  
Black Ka3  
Neutral PPe7  
Stipulation H#2  
Condition BlackSuperTransmutingKing