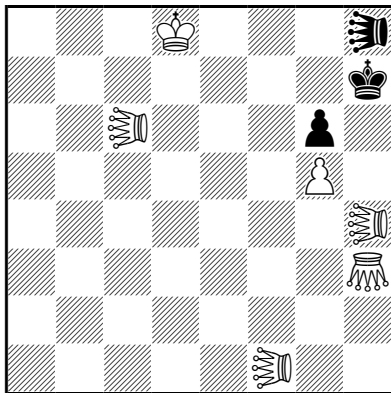



1 - Václav KOTĚŠOVEC
FB1537 StrateGems 74/2016
1. Prize



ss#23 (6+3) C+

2 solutions

 = Grasshopper

 = Kangaroo

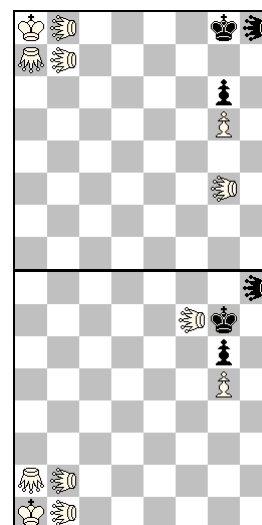
1.Ke7 2.Kf6 3.KAh6 4.KAh2 5.KAh5 6.KAe7
 7.Gh6 8.Gf4 9.KAf7 10.Ke6 11.Kd7 12.KAc7
 13.KAb7 14.Kd6 15.KAg3 16.Gc7 17.Kc5
 18.KAb5 19.Kb6 20.KAb8 21.Ka7 22.Ka8
 23.Ga7 Kg8#

1.Kd7 2.Gc8 3.Ge6 4.Kd6 5.KAf6 6.Kd5 7.Gc4
 8.Ke4 9.KAb4 10.Gf4 11.KAf7 12.Kf3 13.KAf2
 14.Ke3 15.Gd2 16.Kd3 17.Kc2 18.KAb2 19.Kb3
 20.KAb1 21.Ka2 22.Ka1 23.Ga2 Kg7#

Jugde Tadashi Wakashima (SG 82, p.58-61):
 "The most impressive problem in this tourney.
 This is done in the composer's typical style
 (echo mates in very long moves), but the
 shuffling of wK, KAs and Gs is nothing short
 of a miracle."

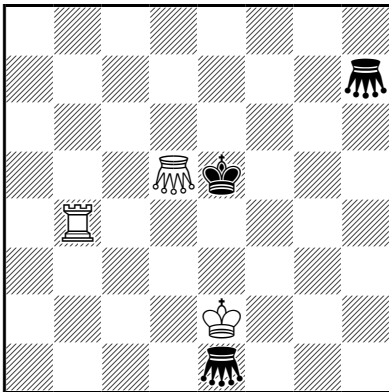
Comment by the solver (SG 76): "Incredible
 master problem with orthogonal and diagonal
 mates" (Wilfried Seehofer)

Mating positions



2 - Václav KOTĚŠOVEC
F3457 The Problemist 2018

(The award is yet not published)



hs#8 (3+3) C+

3.1.1...

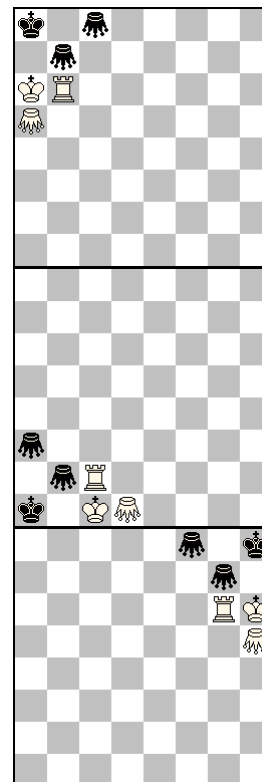
♟♟=Grasshopper

1.Kd3 Gc2 2.Kc4 Kd6 3.Kb5 Kc7 4.Ga5 Gc8
 5.Gc3 Kb8 6.Ka6+ Ka8 7.Rb6 Gb4 8.Ga5 Gb7#

1.Rb6 Kd4 2.Rh6 Kc3 3.Rh3+ Kb2 4.Kd2 Gh2
 5.Gd1 Gc1 6.Rc3 Ga3 7.Rc2+ Ka1 8.Kc1 Gb2#

1.Kf3 Ge6 2.Kg4 Kf6 3.Kh5 Kg7 4.Rg4+ Kh8
 5.Rg6 Gf5 6.Gf7 Gg4 7.Kh6 Gf8 8.Gh5 Gg7#

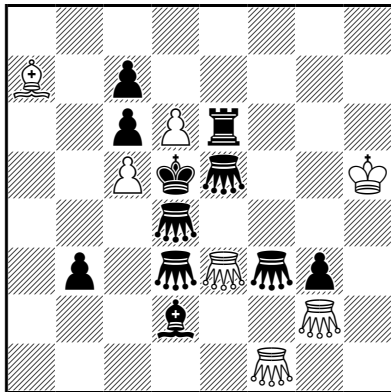
Triple exact echo



Tested by Alybadix 233 hours!

3 - Václav KOTĚŠOVEC
17082 Die Schwalbe 285/2017

(The award is yet not published)



h#2 (7+11) C+

4.1.1.1

  =Grasshopper

1.Gh1 Geh3 2.Gf3 Gd7#
 1.Gc3 Ge7 2.Ge5 Gb7#
 1.Gd1 Ga3 2.Gd3 Ga8#
 1.Gf6 Gb6 2.Gd4 Gd8#

4x switchback of black Gs

4x opening of lines of white grasshopper e3

Comments of the solvers (Die Schwalbe 288/2017):

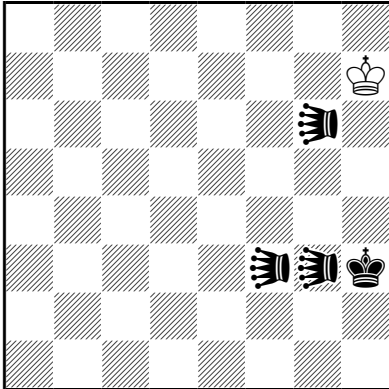
Jochen Schröder: "Eine Nuss! Sobald man eine Lösung gefunden hat, spielen sich die vier anderen fast von selbst: sehr schön! Der weiße Grashüpfer e3 möchte Schach bieten, Schwarz möchte seine Aufstellung gerne beibehalten. Unter Rückkehr geht das recht einheitlich mit Matts auf vier verschiedenen Feldern durch den weißen Grashüpfer. Ob das das Maximum dieses Schemas ist?"

Joachim Benn: "Ausschließlich G-Züge, jeweils ein sG öffnet seinem Kollegen die Tür zum Mattzug und kehrt danach auf sein Ausgangsfeld zurück."

Manfred Rittirsch: "Das durchschaute ich als Thematöser sofort: Vier schwarze Grashüpfer räumen im Wechsel eine Linie des weißen Grashüpfers e3, um anschließend zurückzukehren. Dank einer sehr geschickten Konstruktion wirkt die Stellung längst nicht so überladen, wie es der ambitionierte Vorwurf befürchten läßt."

Karl-Heinz Siehdnel: "Nur Grashüpferzüge. Die zweiten schwarzen Züge sind Rückkehrzüge auf das Startfeld. Es zieht immer nur der wGe3, auch im Mattzug. Ja, Ideen muss man haben ... Gefällt mir außerordentlich gut."

4 - Václav KOTĚŠOVEC
990 Julia's Fairies 2016/I
3. Prize (section B)

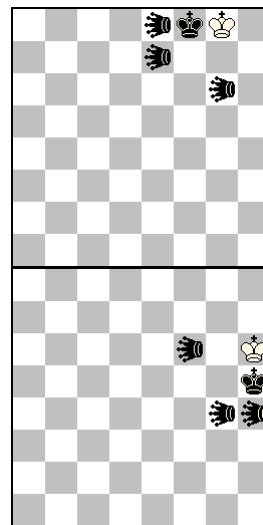


sh#26 (1+4) C+
 2 solutions
 Köko
 ♁=Kangourou

1.Kg4 2.KAg2 4.Ke4 5.KAd5 6.KAc6 7.Kf3
 8.KAg2 9.Kg4 10.KAg5 11.KAg6 12.Kf5
 13.KAh5 14.KAe5 15.KAd5 16.Kg5 17.KAh5
 19.Kf7 20.KAe8 21.Ke6 22.KAe4 23.KAe7
 24.KAe8 26.Kf8 Kg8‡

1.Kg2 2.KAg1 3.KAg4 5.Ke3 6.KAd3 7.KAc3
 8.Kf3 9.KAg3 10.KAh3 12.Kg5 13.KAg6 14.Kf5
 15.KAe6 17.Kd6 18.KAc6 19.KAf6 21.Kf5
 22.KAh3 24.Kh5 25.KAh8 26.KAh4 Kh6‡

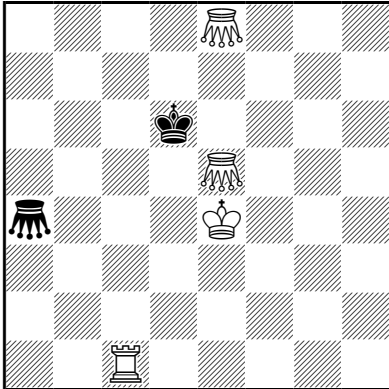
Echo chameleon, mating positions:



Judge Petko Petkov: "It looks almost unbelievable: an aristocratic Tanagra series problem, in 26 moves, with beautiful chameleon-echo mates after very active black play! I think that in such problems an important aesthetic requirement is the long distance between the chameleon-echo constructions. This criterion is met excellently here - in the first solution, the black King is mated on h5, in the second on f8, but in the initial position he stands on h3! Typical work of maestro Kotěšovec, who has created dozens of other remarkable problems in the same super-style, which would have been practically impossible without the help of a computer."

5 - Václav KOTĚŠOVEC
17411 Die Schwalbe 290/2018

(The award is yet not published)



hs±9 (4+2) C+

3.1.1...

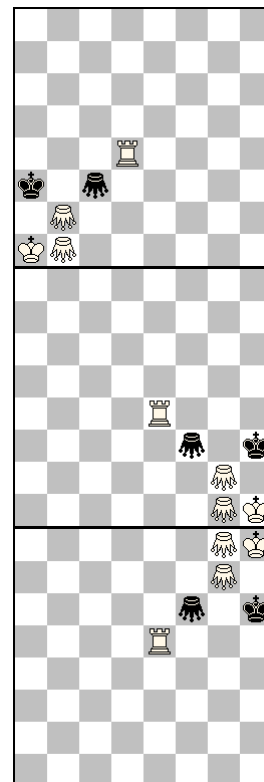
♞♞=Grasshopper

1.Rd1+ Kc6 2.Gb5 Kc5 3.Kd3 Gc6 4.Kc2 Kc4
 5.Kb1 Gc3 6.Gb2 Kb3 7.Rd4 Ge5 8.Ka1 Ka3
 9.Gb1 Gc3#

1.Rc4 Gd4 2.Kf3 Gf6 3.Gg7 Gc6 4.Kg2 Ke5
 5.Ge4 Kf4 6.Kh1 Kf3 7.Gg2 Kg3+ 8.Re4 Kh3
 9.Gg1 Gf3#

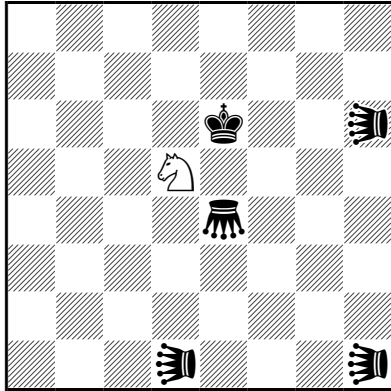
1.Re1 Gf4 2.Kf5 Ke7 3.Kg6 Kf8 4.Gg8 Ke7
 5.Kh7 Kf6 6.Gg7 Kg5 7.Kh8 Kh6 8.Re4 Gd4+
 9.Re5 Gf6#

Triple exact echo



6 - Václav KOTĚŠOVEC
1192 Julia's Fairies 2017

(The award is yet not published)



sh#14 (1+5) C+
 4 solutions
 ♫=Grasshopper
 ♪=Kangaroo
 (no white king)

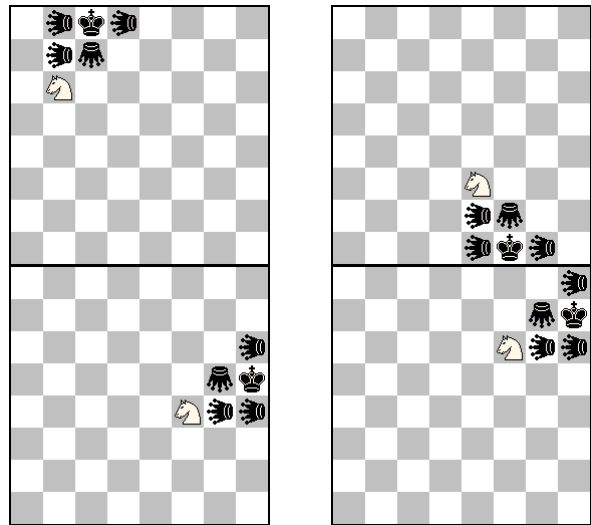
1.Gc6 2.KAb7 3.Gf6 4.KAd6 5.Kf5 6.Gf4 7.Ke5
 8.KAg3 9.Kd6 10.Gc7 11.KAb8 12.Kd7
 13.KAd8 14.Kc8 Sb6#

1.Kf5 2.Kg4 3.Gh4 4.Kh3 5.KAh2 6.Kg3 7.Gf2
 8.Kg2 9.KAe2 10.Kf1 11.KAc1 12.KAg1
 13.KAh1 14.KAe1 Se3#

1.Kd6 2.KAd7 3.Ke5 4.Ge6 5.Kf5 6.KAg4 7.Kg6
 8.Kf7 9.Gg8 10.Kg6 11.Gg5 12.Kh5 13.KAh7
 14.KAh4 Sf4#

1.Ke5 2.Kd4 3.KAd6 4.KAd3 5.Ke5 6.Kf5
 7.KAg6 8.Ke6 9.Ge7 10.Kf7 11.Gg7 12.Kg8
 13.Kh7 14.KAh8 Sf6#

4-fold echo



Comment of the reader of JF website, Sebastien Luce
 (JF, March 11, 2017): "Beautiful black triangles!"