



14+7

S#8

Selfmate in 8

(C+)

Composed by: **Daniele Gatti**

NUMBER 1

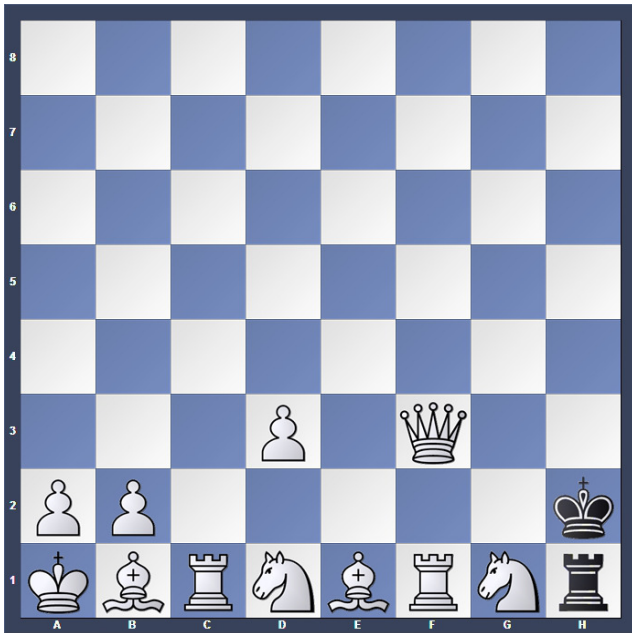
>>> 2° PRIZE <<< on DENES GECZI Memorial Tourney 2016, section S#5-10, judge **JOZSEF PASZTOR**.

Solution: **1. f8=Q+!**

1. ... Sxf8 2. gxf8=R+
2. ... Ke7 3. dxc8=S+
3. ... Kxf8 4. h8=B [zugzwang]
4. ... cxb6 5. O-O-O [zugzwang]
5. ... b5 6. b4 [zugzwang]
6. ... cxb3 e.p. 7. Scb1 [zugzwang]
7. ... b4 8. Sb5 [zugzwang] ... **b2#**

Theme: Valladao + AUW.

FEN: 2rk4/2pP1PPP/1PQ2bn1/3B4/2p5/N1Np4/1P1P1R2/R3K3



11+2

S#9

Selfmate in 9

(C+)

Composed by: **Daniele Gatti**

NUMBER 2

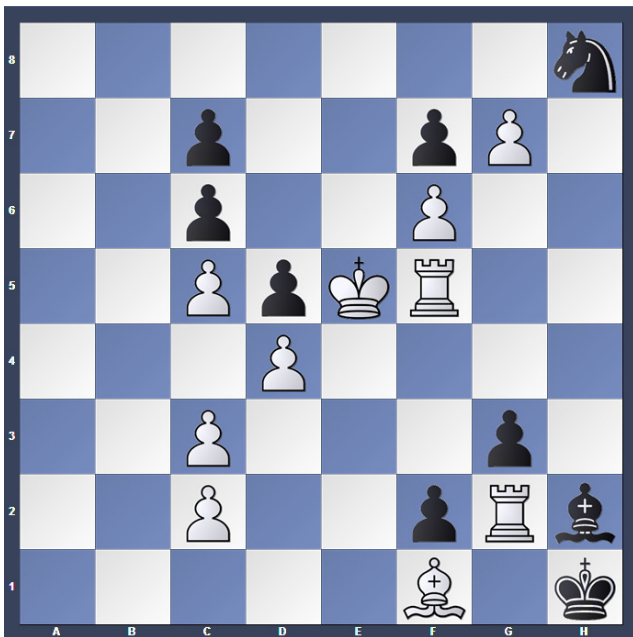
>>> 3° PRIZE <<< on DAVID DURHAM Memorial Tourney 2017, section S#5-10,
judge **JOZSEF PASZTOR**.

Solution: **1. Qa8!** [zugzwang]

1. ... Rxc1 2. Qh8+
 2. ... Kg2 3. Rc2+
 3. ... Kxf1 4. Rf2+
 4. ... Kxe1 5. Qc3+
 5. ... Kxd1 6. Bc2+
 6. ... Kc1 7. Rf1+
 7. ... Rxf1 8. Bd1+
 8. ... Kxd1 9. Qd2+ ... **Kxd2#**

COMMENT: All White pieces are sacrificed. Black Minimal configuration.

FEN: 8/8/8/8/3P1Q2/PP5k/KBRNBRNr



10+9

S#12

Selfmate in 12

(C+)

Composed by: **Daniele Gatti**

NUMBER 3

Published on GAUDIUM (2016)

Set Play:

1. ... Sg6#

Solution: **1. g8=S!** [zugzwang]

1. ... Bg1 2. Sh6 [zugzwang]

2. ... Bh2 3. Sg4 [zugzwang]

3. ... Bg1 4. Se3 [zugzwang]

4. ... Bh2 5. Sd1 [zugzwang]

5. ... Bg1 6. Sb2 [zugzwang]

6. ... Bh2 7. Sd3 [zugzwang]

7. ... Bg1 8. Sc1 [zugzwang]

8. ... Bh2 9. Se2 [zugzwang]

9. ... Bg1 10. Rh5+

10 ... Bh2 11. Rgxh2+

11. ... gxh2 12. Rf5 [zugzwang] ... **Sg6#**

FEN: 7n/2p2pP1/2p2P2/2PpKR2/3P4/2P3p1/2P2pRb/5B1k



15+2

S#12

Selfmate in 12

(C+)

Composed by: **Daniele Gatti**

NUMBER 4

Published on THE PROBLEMIST (2017)

Waiting for verdict

Solution: **1. Rb6!** [zugzwang]

1. ... Rxb6 2. Rb7+

2. ... Rxb7 3. Sc6+

3. ... Kxc8 4. Se7+

4. ... Kb8 5. Sd7+

5. ... Rxd7 6. f8=R+

6. ... Rd8 7. Bc7+

7. ... Kxc7 8. Qa7+

8. ... Kd6 9. Qc5+

9. ... Kd7 10. Qc6+

10. ... Kxe7 11. Re8+

11. ... Rxe8 12. Qd6+ ... **Kxd6#**

COMMENT: All White pieces are sacrificed, including the promoted Rook. Black Minimal configuration.

FEN: 1kB2N2/1r1RNP2/Q1R3P1/B4P2/3PKP2/3P1P2/8/8



11+9

S#9

Selfmate in 9

(C+)

Composed by: **Daniele Gatti**

NUMBER 5

Published on THE PROBLEMIST (2016)

Waiting for verdict

Solution: **1. Sg8!** [zugzwang]

1. ... Bb1 2. f7 [zugzwang]

2. ... Ba2 3. f8=R [zugzwang]

3. ... Bb1 4. Rf7 [zugzwang]

4. ... Ba2 5. b7 [zugzwang]

5. ... Bb1 6. b8=R [zugzwang]

6. ... Ba2 7. Rxb3 [zugzwang]

7. ... Bxb3 8. Sxb3 [zugzwang]

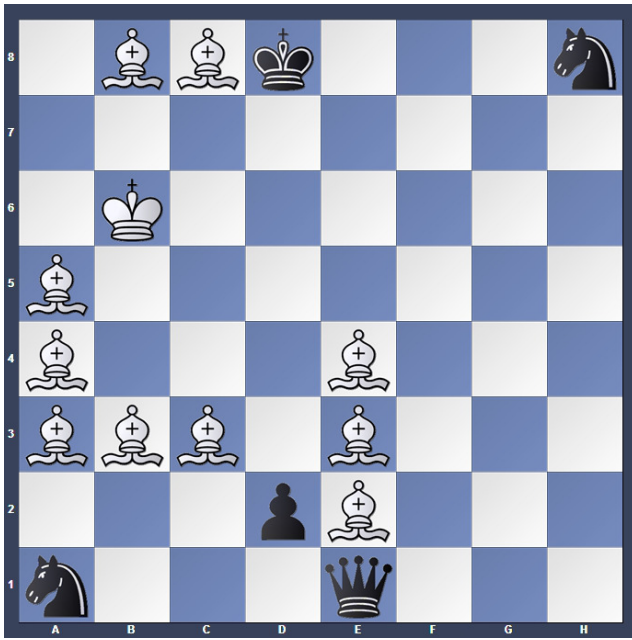
8. ... d2 9. Sxd2 [zugzwang] ... **e5#**

7. ... Bb1 8. Ra3 [zugzwang]

8. ... Ba2 9. Rxa2 [zugzwang] ... **e5#**

COMMENT: Subsidiary tries with 1. Sg6? or 1. Sc6? are refuted by 1. ... e5+! (same move as the final checkmate).

FEN: 4B3/4N3/1P1kpP2/p2p4/P2Kp3/1pPpP3/bPpN4/2B5



11+5

S#7

Selfmate in 7

(C+)

Composed by: **Daniele Gatti**

NUMBER 6

Published on DIE SCHWALBE (2017)

Waiting for verdict

Solution: **1. Kc6+!**

1. ... Kxc8 2. Be6+

2. ... Kxb8 3. Bc7+

3. ... Ka8 4. Kc5+

4. ... Ka7 5. Kc4+

5. ... Ka6 6. Kb4+

6. ... Qxe2 7. Bb5+ ... **Qxb5#**

1. ... Ke8 2. Kd6+

2. ... Kf8 3. Ke5+

3. ... Kg7 4. Kf4+

4. ... Kh6 5. Kf3+

5. ... Kh5 6. Bg4+

6. ... Kh4 7. Bg3+ ... **Qxg3#**

COMMENT: Echo mates. 5 light-squared Bishops and 5 dark-squared ones. All Bishops are involved in both variations.

FEN: 1Bbk3n/8/1K6/B7/B3B3/BBB1B3/3pB3/n3q3