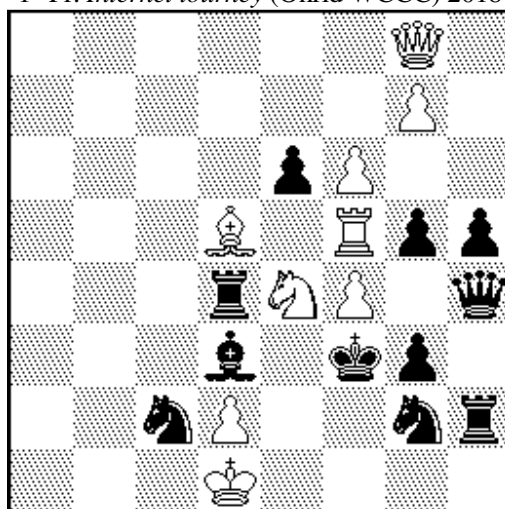


1. Zoran Gavrilovski

1st Pr. *Internet tourney* (Ohrid WCCC) 2018



H#2 4 solutions 9+11 (C+)

1.B:e4 (x) Q:e6 A 2.B:d5 (y) Qe2#

1.Q:f4 (m) Qb8 B 2.Q:f5 (n) Q:g3#

1.e:d5 (y) f:g5+ 2.K:e4 (x) Qe6# A

1.e:f5 (n) Sf2+ 2.K:f4 (m) Qb8# B

“Helpmate of the future” with two pairs of elimination of white units, including the set theme of elimination at the B1 move:

I)-II) Annihilation of a white front battery piece in order to open a line for the white Queen after capturing the rear piece of the same battery at the B2 move;

III)-IV) Elimination of a white rear battery piece in order to allow the black King to capture the front battery piece, combined with activation of the other battery and mates by the white Queen.

The play is connected by a change of functions of white moves (Qe6 A and Qb8 B appear as W1 moves in the 1st pair of solutions and W2 moves in the other), and double exchange of squares of arrival of black pieces capturing the white pieces between the solutions I/III and II/IV:

I B:e4/B:d5 x/y;

III e:d5/K:e4 y/x;

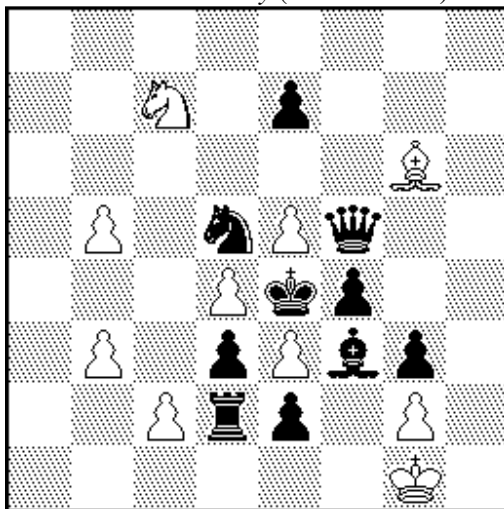
II Q:f4/Q:f5 m/n;

IV e:f5/K:f4 n/m.

E-mail of Z. Gavrilovski: mprobl@yahoo.com

2. Zoran Gavrilovski

1st-2nd Pr. *Sabra tourney* (Ohrid WCCC) 2018



H#2 b) Pb5→h4 10+10 (C+)

c) Sc7↔Qf5, d) Bf3-c4

- a) 1.S:c7(*Sd5:Sc7*) B:f5+(*Bg6:Qf5*) 2.Kd5 c4#;
- b) 1.Q:g6(*Qf5:Bg6*) g:f3+(*Pg2:Bf3*) 2.Kf5 e4#;
- c) 1.B:g2(*Bf3:Pg2*) c:d3+(*Pc2:Pd3*) 2.Kf3 Bh5#;
- d) 1.d:c2(*Pd3:Pc2*) S:d5(*Sc7:Sd5*) 2.Kd3 B:f5#.

A. Mutual black-white/white-black captures (the set theme) in 4 solutions:

- a) 1.Sd5(A):*Sc7(E)* / d) 1...*Sc7(E):Sd5(A)*;
- b) 1.Qf5(B):*Bg6(F)* / a) 1...*Bg6(F):Qf5(B)*;
- c) 1.Bf3(C):*Pg2(G)* / b) 1...*Pg2(G):Bf3(C)*;
- d) 1.Pd3(D):*Pc2(H)* / c) 1...*Pc2(H):Pd3(D)*.

B. First ever **fourfold cycle of captured and capturing pieces**:

- a) 1.Sd5(A):*Sc7(E)* *Bg6(F):Qf5(B)*+;
- b) 1.Qf5(B):*Bg6(F)* *Pg2(G):Bf3(C)*+;
- c) 1.Bf3(C):*Pg2(G)* *Pc2(H):Pd3(D)*+;
- d) 1.Pd3(D):*Pg2(H)* *Sc7(E):Sd5(A)*.

The cycle of roles of Black/White pieces can be also described as follows:

- a) 1.A captures & B is captured / E is captured & F captures;
- b) 1.B captures & C is captured / F is captured & G captures;
- c) 1.C captures & D is captured / G is captured & H captures;
- d) 1.D captures & A is captured / H is captured & E captures.

C. Square vacation for the bK at B1 & arrival of the bK on a vacated square at B2

- a) 1.Sd5:c7 ... 2.Ke4-d5;
- b) 1.Qf5:g6 ... 2.Ke4-f5;
- c) 1.Bf3:g2 ... 2.Ke4-f3;
- d) 1.Pd3:c2 ... 2.Ke4-d3.

D. Cycle of squares of arrival between W1 and B2 moves of a), d), c) & b):

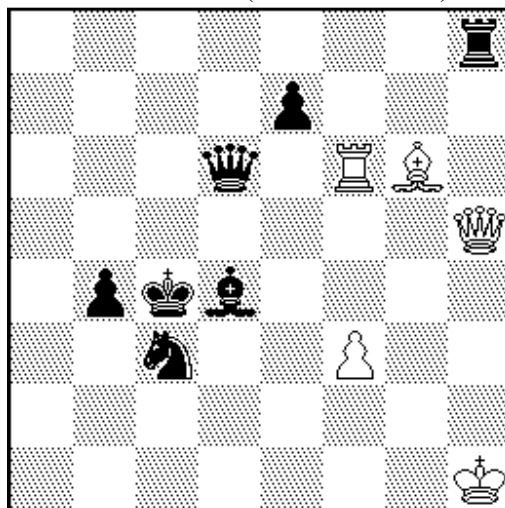
- a) 1...Bf5+(A) 2.Kd5(B);
- d) 1...S:d5+(B) 2.Kd3(C);
- c) 1...c:d3+(C) 2.Kf3(D);
- b) 1...g:f3+(D) 2.Kf5(A).

Notes: the bQ plays as a Queen, as in c) it prevents 1.S~ Sg7+ 2.Kd5 c4+? 3.Q:c4!; the bBf3 prevents 1.K:e3 c3 2.Q~ S:d5+? 3.B:d5!, so a bB (not a bP) must be on f3.

E-mail of Z. Gavrilovski: mprobl@yahoo.com

3. Zoran Gavrilovski

1st Pr. 20th Sabra TT (Dresden WCCC) 2017



H#2 b) Rg6, c) Sg6 5+7 (C+)

- a) 1.Qc5 Ra6 2.Kb5 Bd3#
- b) 1.Qd5 Rb6 2.Kc5 Rgc6#
- c) 1.Qe5 Rc6+ 2.Kd5 S:e7#

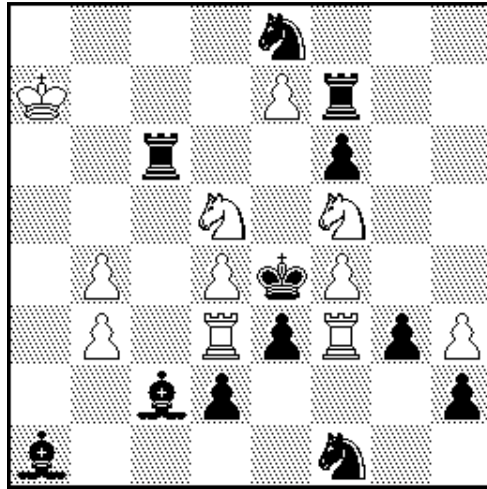
Simultaneous closing and opening of the same white lines, with closing of the 5th row and anticipatory self-pin by the bQ and opening of the 6th row to allow moves by rge wRf6 trough the opened gate on the 6th row.

Forsberg twins in a Meredith setting.

E-mail of Z. Gavrilovski: mprobl@yahoo.com

4. Zoran Gavrilovski

Special Prize *Olympic tourney* (Batumi) 2018



H#2

4 solutions

11+12 (C+)

1.K:f5 Rd:e3 2.R:e7+ S:e7#

1.K:d5 Rf:e3 2.B:d4+ R:d4#

1.K:d3 Sd:e3 2.S:e3 R:e3#

1.K:f3 R:d2 2.Be4 Sh4#

Cyclic Zilahi with elimination of/mate by:

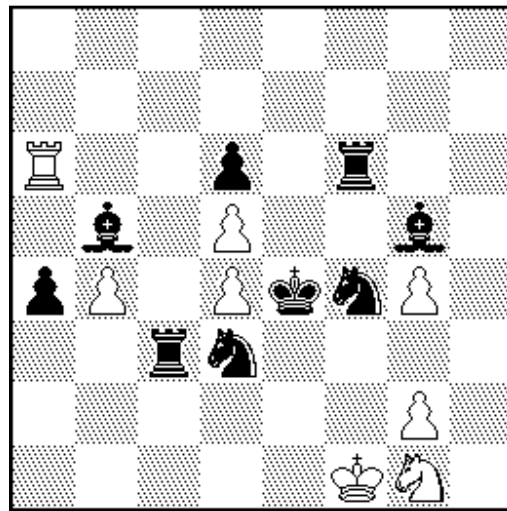
- I) Sf5/Sd5 *A/B*;
- II) Sd5/Rd3 *B/C*;
- III) Rd3/Rf3 *C/D*;
- IV) Rf3/Sf5 *D/A*.

The theme is achieved with bK star-flights (Ke4→:f5/:d5/:d3/:f3) as thematic moves.

Triple play on e3 at W1 moves and triple sacrifice at B2 move in the first three solutions.

E-mail of Z. Gavrilovski: mprobl@yahoo.com

5. Zoran Gavrilovski
 10th–12th Pl. 10th WCCT 2016-2017



H#3 2 solutions 8+9 (C+)

1.S:b4+ **Se2** [Sf3??. R:a4??] 2.Re3 R:a4 3.Sbd3 Sc3#

1.S:d5+ **Sf3** [Se2??. R:d6??] 2.Be3 R:d6 3.S6f4 Sg5#

Battery check, **self-pin** of the wS and **unpin** of the self-pinned wS by a bS's switchback after allowing a black line piece to pass across the switchback square (*Klasinc* theme) in order to self-block e3.

Annihilation of wPb4 or wPd5 by the respective bS is utilized by means of ambush by the white rook.

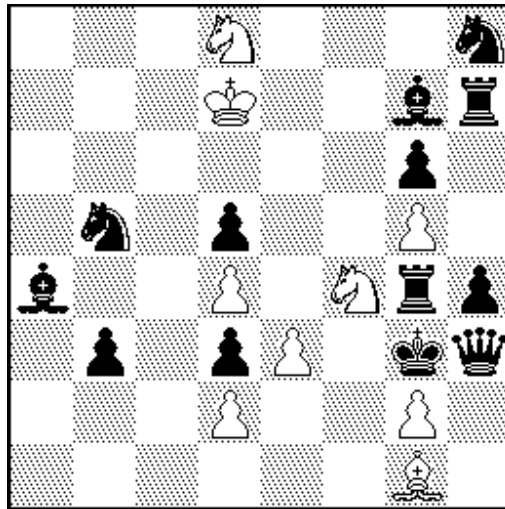
Mates on a square vacated by a black line piece at B2 move (delayed *Umnov* effect):

- 2.Rc3-e3 ... 3...Sec3#;
- 2.Bg5-e3 ... 3...Sfg5#;

E-mail of Z. Gavrilovski: mprobl@yahoo.com

6. Zoran Gavrilovski

17th–18th Pl. 10th WCCT 2016-2017



H#3 b) $wPd4=bPd4$, c) $Pd2 \rightarrow e5$ 9+13 (C+)

a) $1.B:d4+$ $Sf7$ 2. $Bg7$ $Sd6$ 3. $d4$ $Se4\#$

b) $1.R:g5+$ $Se6$ 2. $Rg4$ $S(e):d4$ 3. $g5$ $Sf5\#$

c) $1.S:d4+$ $Sc6$ 2. $Sb5$ $S(c)d4$ 3. $d2$ $Se2\#$

Three battery checks, triple self-pin of the $wSd8$ and three unpinning switchbacks.

E-mail of Z. Gavrilovski: mprobl@yahoo.com