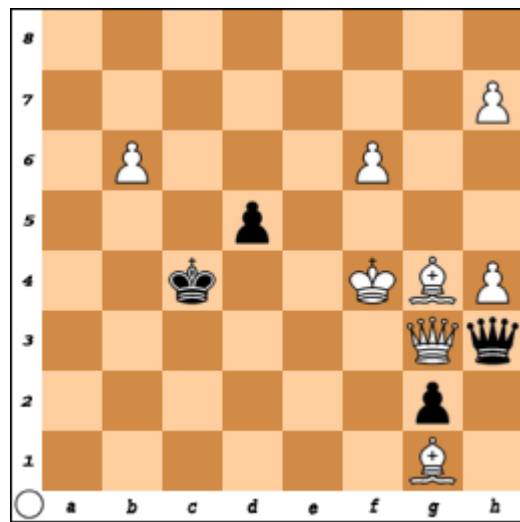


1

Ivo Tomic, Super Problem, April/2017  
TT 185, 5<sup>th</sup> Hon. Ment.



H#2                      2 Solutions                      (8 + 4) C+

1. Qh3-h1?! (leaves control over squares b3 and d3) Bd1(Qa3) 2. tempo? (Qb3(Be2)#)

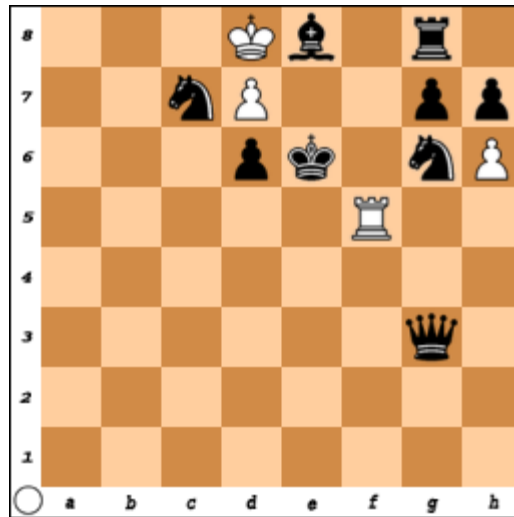
I    1. Qh2(Qxh4?) Bd1 2. Qh2-h1 Qb3#

II   1. Qxh4(Qh2?) Qa3 2. Qh4-h1 Be2#

Solutions are separated by the two pinning tempo-moves (B1)

2

Ivo Tomic, Super Problem, September/18



H#2 a) diagram (4 + 9) C+

- b) h7 → h6
- c) Rf5 → h6
- d) Ke6 → d6

a) 1. gxh6 dxe8=S 2. Rg7 Sxg7#

b) 1. Rh8 dxe8=B 2. Rh7 Bd7#

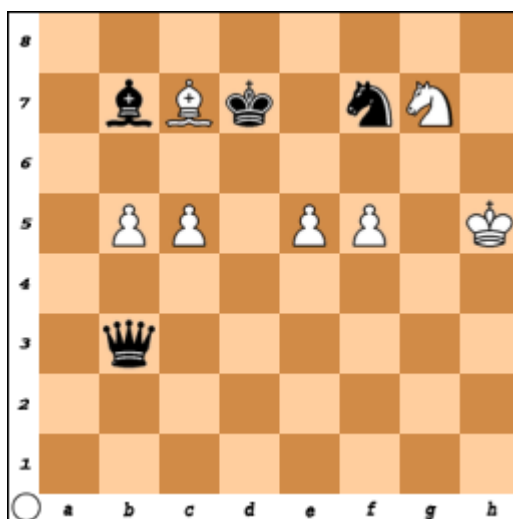
c) 1. Kf7 dxe8=R 2. Sf8 Re7#

d) 1. Rf8 dxe8=Q 2. Rf6 Qd7#

White selfpinning through AUW (W1) followed by black thematic (TT 214) unpinning (B2)

3

Ivo Tomic, The Macedonian Problemist 57b, December/18  
TT 006, 3<sup>rd</sup> Prize



H#2 a) diagram (7 + 4) C+  
b) Kd7 ↔ Bc7 (interchange places)  
c) Kd7 → e7

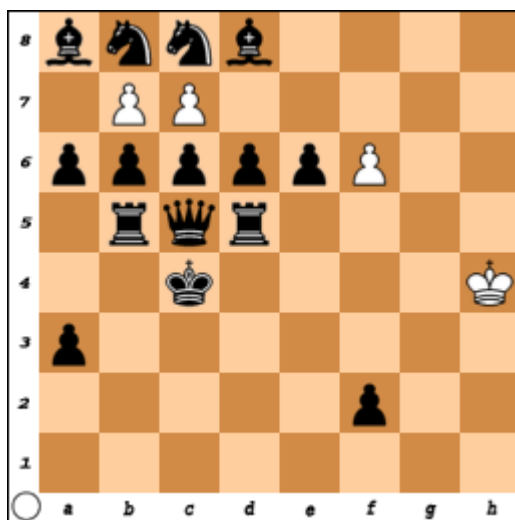
- a) 1. Sd6 *exd6* 2. Bc8 *c6#*
- b) 1. Bc6 *bxc6* 2. Qb8 *Se6#*
- c) 1. Qe6 *fxe6* 2. Sd8 *Bd6#*

Janevski-theme definition: **In one phase black piece A self-blocks its King and mate is inflicted from square x; in another phase A is sacrificed on x.**

Two closed cyclic shifts:  
 - of the sacrificial and mating squares (*italic*),  
 - of the sacrificing and self-blocking black pieces (underlined),  
 enable the Janevski-theme triplication to be compressed into three phases.

# 4

Ivo Tomicic, The Problemist, January/16



H#3      2 Solutions      (4 + 15) C+

- a) diagram
- b) Bs ↔ Ss

**aI**      1. Ra5 bxa8=S 2. Kb5 Sxb6 3. Kxb6 cxb8=Q#  
 (1....bxc8=S? 4. Bb7!)      if bI, then 3....bxa8=Q+ 4. Sa7!

**aII**      1. Qe3 cxd8=S 2. Kc5 Sxc6 3. Kxc6 bxc8=Q#  
 (1....cxb8=S? 4. Bc7!)      if bII, then 3....cxd8=Q+ 4. Sd7!

**b) bishops switch places with knights**

**bI**      1. Kb4 cxb8=S 2. Ka5 Sxa6 3. Kxa6 bxa8=Q#  
 if aI, then 3....cxb8=Q+ 4. Sb7!

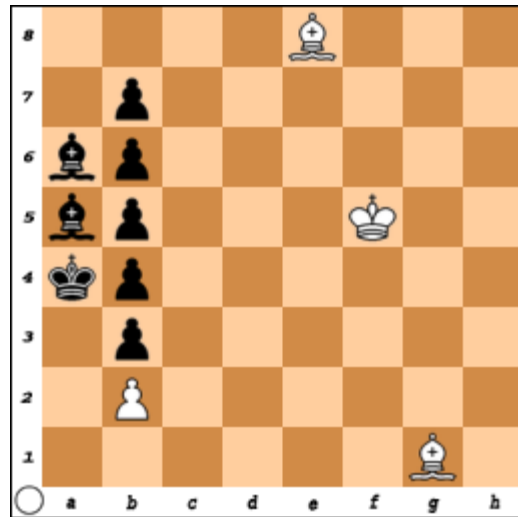
**bII**      1. Re5 bxc8=S 2. Kd5 Sxd6 3. Kxd6 cxd8=Q#  
 if aII, then 3....bxc8=Q+ 4. Sc7!

Eight promotions of two white pawns (four into knight to be sacrificed and four into queen to give mate) at four different squares

Zilahi theme doubled

5

Ivo Tominić, Super Problem, March/2017  
TT 179, 2<sup>nd</sup> Prize, section: non-ideal mates in 3.5-n



H#4.5      2 Solutions      (4 + 8) C+

**I    1...Bxb5+ 2. Kxb5 Bh2 3. Kc5 Ke6 4. b5 Kd7 5. Kb6 Bg1#**

**II    1...Bxb6 2. Bxb6 Bxb5+ 3. Ka5 Bxa6 4. Ka4 Bxb7 5. Ba5 Bc6#**

Zilahi forced by the stalemate avoidance in Meredith

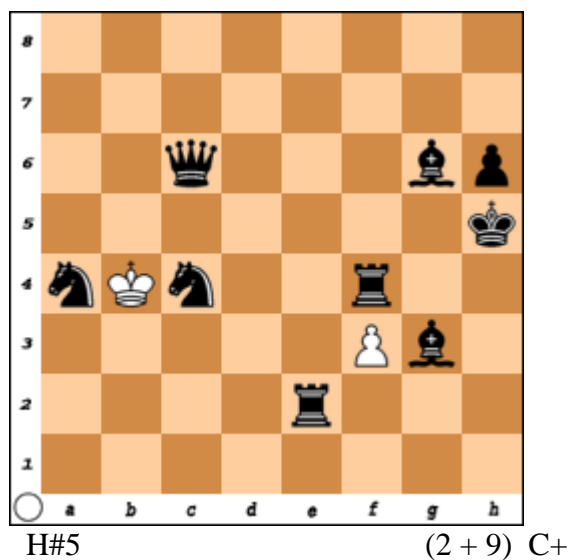
Switchback of white bishop in solution I

Two black FML-effects in each solution:

- through the place exchange  $Kb5 \Leftrightarrow Pb6$  in I
- through the switchbacks of king and bishop in II

6

Ivo Tomic, The Macedonian Problemist 57b, December/18  
 TT 005, 4<sup>th</sup> – 5<sup>th</sup> Hon. Ment.



1. Sc5 Kc3 2. Se4+ Kd4 3. Se3 Ke5 4. Bh4 Kxf4 5. Sg4 fxe4#

Three pieces are changing their order along the fourth rank in the Mihajloski style.