

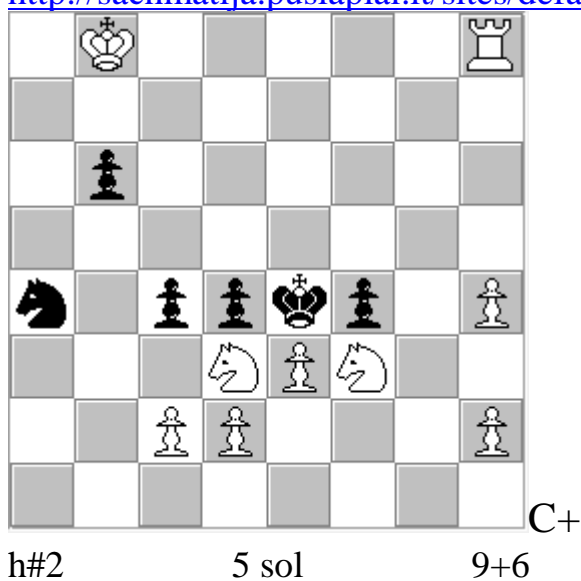
WCCI 2016-2018_E

Vasyl Kryzhanivskyi

№1

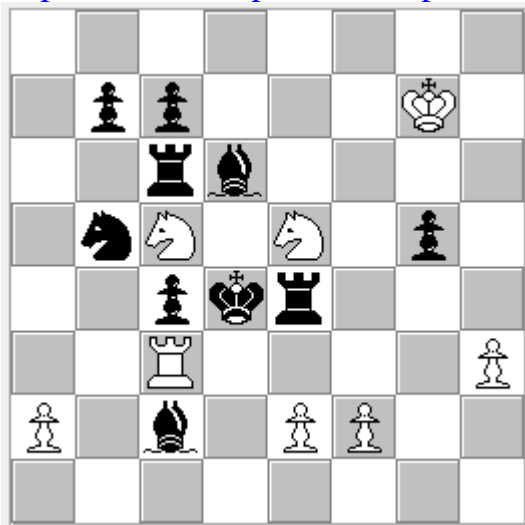
Šachmatija 2018_1 №3741 Award is not published yet

<http://sachmatija.puslapiai.lt/sites/default/files/uzdaviniai1.originalai.2018.pdf>



1. Sc3 Rf8 **A** 2. Sd5 Sg5# **B**
1. d:e3 Sg5 **B** 2. Kd4 Rd8# **C**
1. Kd5 Rd8 **C** 2. Kc6 S:d4# **D**
1. Kf5 S:d4 **D** 2. Kg4 Sf2# **E**
1. f:e3 Sf2 **E** 2. Kf4 Rf8# **A**

5-phase (!) cycle of White's 1st and 2nd moves involving three thematic white pieces in a twinless position.



h#2

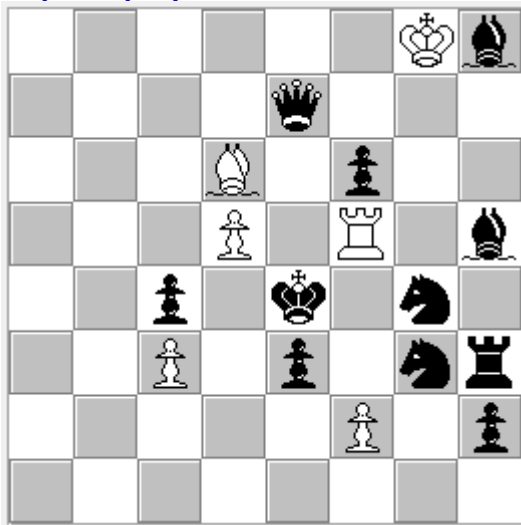
6 sol

8+10

- 1. S:c3 Sa4 2. **Sd5** Sf3#
- 1. R:e5 Re3 2. **Red5** Se6#
- 1. R:c5 Kf6 2. **Rcd5** R:c4#

- 1. K:c3 Sed3 2. Sd4 S:e4#
- 1. K:c5 Ra3 2. Kb6 Sd7#
- 1. K:e5 Scd7 2. Kf4 Rf3#

First-ever presentation in a twinless position of two different Zilahi cycles: ab-bc-ca and ac-cb-ba. A record.



C+

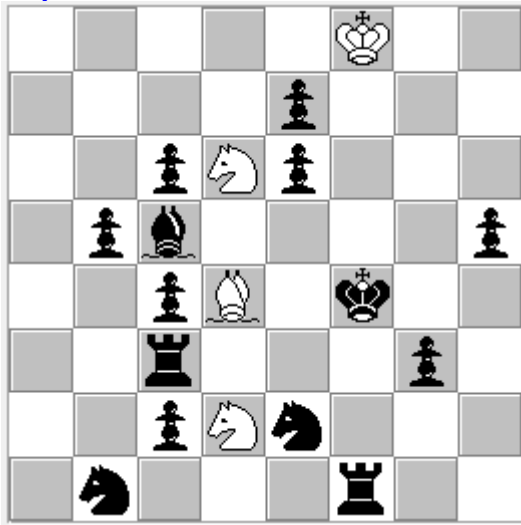
h#3

3 sol

6+11

- 1.S:f2! Bf4 2.Kf3 Bh6 3.Kg4 Rf4#
 1.Q:d6! Rf4 2.Ke5 Rd4 3. Sf5 f4#
 1.K:f5! f4 2. Kg6 f5 3. Kh6 Bf4#

Cycle of 1st-3rd moves. Zilahi cycle. Cycle of functions of three thematic white pieces. Same-square mechanism on 1st and 3rd moves with the “come-go-come” effect. Model mates. First-ever presentation of such content in a twinless position.



C+

h#3

3 sol

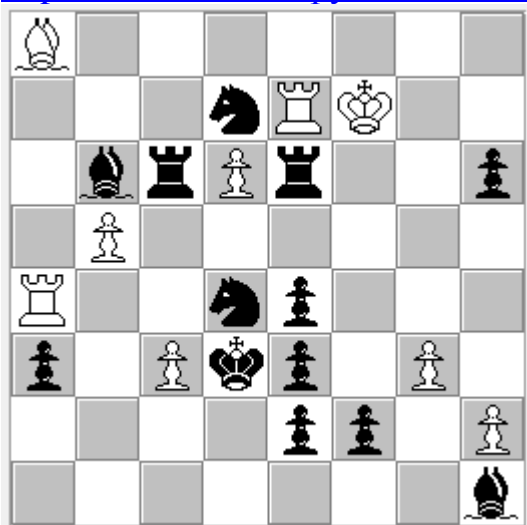
4+14

1. e:d6! Se4 2. Kg4+! Sf2 3. Kh4 Bf6#

1. S:d4! S:b1 2. Ke5+! Sf7 3. Kd5 S:c3#

1. S:d2! Sb7 2. Ke4+! Bf2 3. Kd3 S:c5#

Zilahi cycle, combined with checks to the white king and self-pinning of white pieces. Model mates.



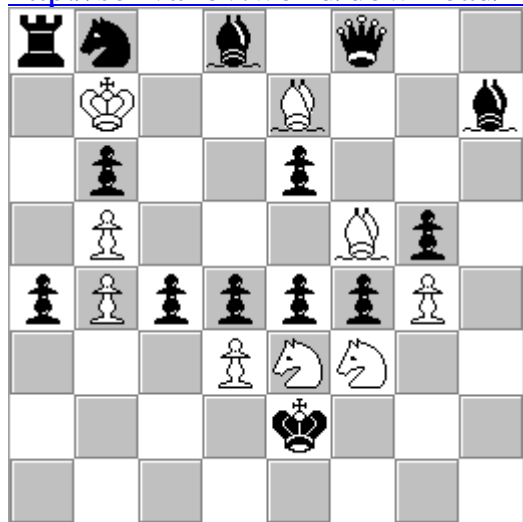
h#3

3 sol

9+13

1. Rc5! B:e4 2. K:e4(b) R:e6+ A 3. Kd5 R:d4# B
1. Rg6! Re:e4 2. K:e4(r1) R:d4+ B 3. Kf3 B:c6# C
1. Sf5! Ra:e4 2. K:e4(r2) B:c6+ C 3. Ke5 R:e6# A

Cycle of White's 2nd and 3rd moves + Zilahi cycle + same-square mechanism.
Cycle of functions of three white pieces, cycle of functions of three black pieces.



H#3

b) e6->d6

9+14

c) Bf5->e8

a) 1. K:d3! S:c4 **A** 2. K:c4 B:e6+ 3. K:b5 S:d4# **B**

b) 1. K:e3! S:d4 **B** 2. K:d4 Bf6+ 3. Kd5 d:e4# **C**

c) 1. K:f3! d:e4 **C** 2. K:e4 Bc6+ 3. Ke5 S:c4# **A**

A record. Three interrelated cycles: passive Zilahi, active Zilahi, cycle of White's 1st-3rd moves. Cyclic change of functions of thematic white pieces: passive sacrifice – active sacrifice – mating move. First-ever presentation of this synthesis.