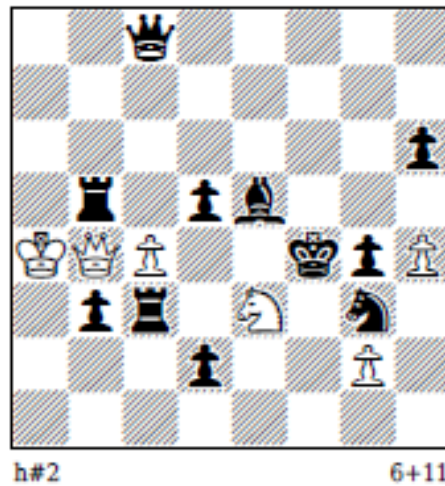


WCCI 2016-18
Section E
ilijaserafimovic@gmail.com

1.

Ilija Serafimović (Serbia)

4th Prize, Шахматная композиция 2017
2q5/8/7p/1r1pb3/KQP2kpP/1pr1N1n1/3p2P1/8



2 sol.

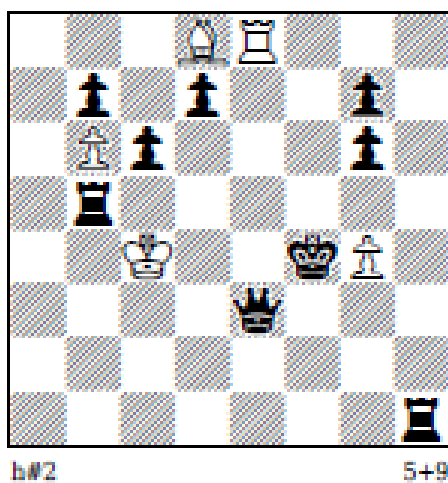
1.Rxe3! (Rxc4?) Qc5 (Qxd2?) 2.Re4 Qf2#

1.Qf5! (Qxc4?) Qd6 (Qf8?) 2.Qe4 Qxh6#

Avoiding pin of white and black pieces, self-blocks on the same square e4.

2.

Ilija Serafimović (Serbia)
SuperProblem 2018



2 sol.

b) wBd8-e7

1 sol.

c) wRe8-e7

1 sol.

a) Diagram (3BR3/1p1p2p1/1Pp3p1/1r6/2K2kP1/4q3/8/7r):

1.d6 Be7 2.Ke5 Bg5#

1.Rh6 Re7 2.Kg5 Re4#

b) wBe7 (4R3/1p1pB1p1/1Pp3p1/1r6/2K2kP1/4q3/8/7r):

1.Ke5 Bd8+ 2.Kd6 Bc7#

1... ~ ?? 2.d6 Bg5#

Switchback to diagram position

c) wRd7 (3B4/1p1pR1p1/1Pp3p1/1r6/2K2kP1/4q3/8/7r):

1.Kg5 Re8+ 2.Kh6 Rh8#

1... ~ ?? 2.Rh6 Re4±

Switchback to diagram position

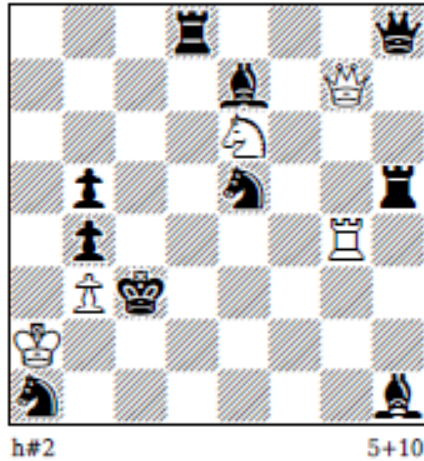
Self-blocks and king moves on the same squares (d6+h6)

3.

Ilija Serafimović (Serbia)

1st Prize, 2nd YCCC 2017

3r3q/4b1Q1/4N3/1p2n2r/1p4R1/1Pk5/K7/n6b



2 sol.

1.Bg5 Rd4 2.Sf3 Qc7#

1.Bf6 Rg2 2.Sd7 Qg3 #

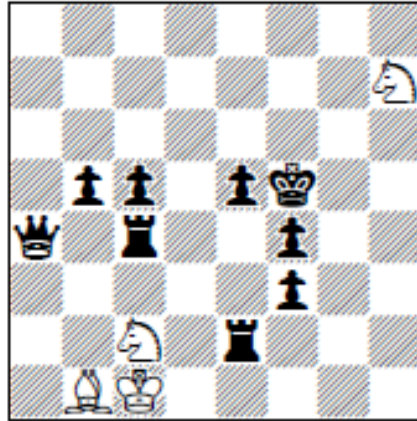
Reciprocal interferences:

in the 1st solution bBe7 closes black line, while wRg4 closes white line; in 2nd solution bBe7 closes white line, while wRg4 closes black line; plus 2 more interferences of black lines by unpinned bSe5.

5.

Ilija Serafimović (Serbia)
“Problemist” 2017.

8/7N/8/1pp1pk2/q1r2p2/5p2/2N1r3/1BK5



h#2.5

4+9

SetPlay

2 sol.

SetPlay:

1... 2.Rg2 Kb2 3.Rg4 Sd4#

1... 2.Qa6 Kd1 3.Qe6 Se3#

Solutions:

1...Kd1 2.Rg2 Ke1 3.Rg4 Sd4#

1...Kb2 2.Qa6 Kb3 3.Qe6 Se3#

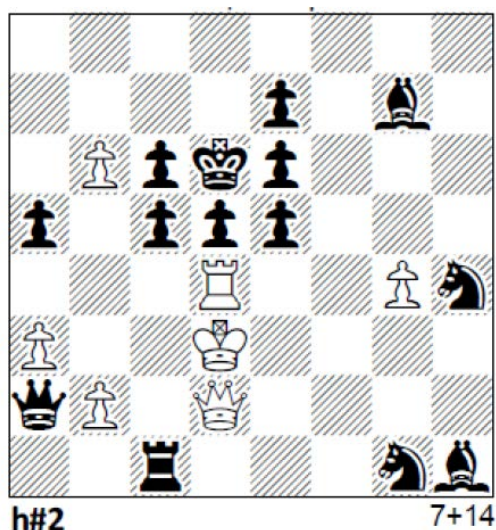
Successive unpins of WS with reciprocal affects.

6.

Ilija Serafimović (Serbia)

1st Prize YCCC 2016, group B

8/4p1b1/1Ppkp3/p1ppp3/3R2Ps/P2K4/qP1Q4/2r3sb



2 sol.

b) wRd4=wPd4

a)

1.Qa1 Re4 2.dxe4+ Ke3#

1.Sg2 Rc4 2.dxc4+ Ke4#

b)

1.a4 dxc5+ 2.Kxc5 Qb4#

1.Bf6 dxe5+ 2.Kxe5 Qh2#

Two pairs of active sacrifices in the form of Forsberg twins.