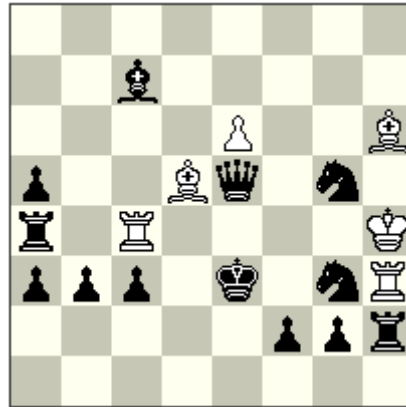


No.1

Marjan Kovačević
Boris Shorokhov 50 JT 2018
1st Prize



h#2.5 2 solutions 6+13

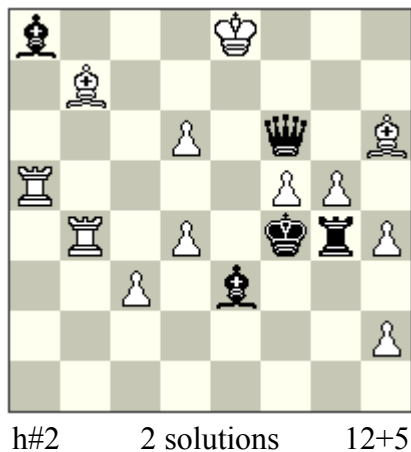
1...Be4 2.Kf4 Rxc3 3.Sxe4 Rf3#

1...Re4+ 2.Kf3 Bxb3 3.Sxe4 Bd1#

Grimshaw-Zilahi, self-unpin, pin-mates. 3 pairs of pieces exchange roles.

No.2

Marjan Kovačević
Ohrid IT 2018
4th HM



1.Qxf5 Rbb5 2.Qxg5! Rf5#

1.Qxg5? Rbb5 2.Qxf5?? Rxf5#

1.Qe5+?/Qe6+?/Qf7+?/Qf8+?/Qg6+? Rbb5 2.Qxf5? Rxf5#

1.Qxd6 Bf8 2.Qxd4! Bd6#

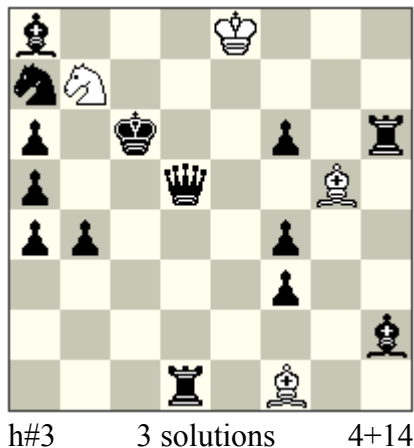
1.Qxd4? Bf8 2.Qxd6?? Bxd6#

1.Qd8+?/Qe5+?/Qe6+?/Qe7+?/Qf8+?/Qg6+? Bf8 2.Qxd6? Bxd6#

Umnov + tempo-self-pin. Anti-reversal. All black moves by BQ, WR&WB exchange roles.

No.3

Marjan Kovačević
Gligor Denkovski MT 2017
1st Prize



1.Bg1 **Bxf6** 2.Bc5 **Bd8** 3.Rd6 Sxa5#

1.Rh7 **Bxf4** 2.Rc7 **Be3** 3.Bd6 Sd8#

Opening black lines for different selfblocks on d6.

1.Qd3 **Bh4!** 2.Kb5 Bf2 3.Sc6 **Sd6#**

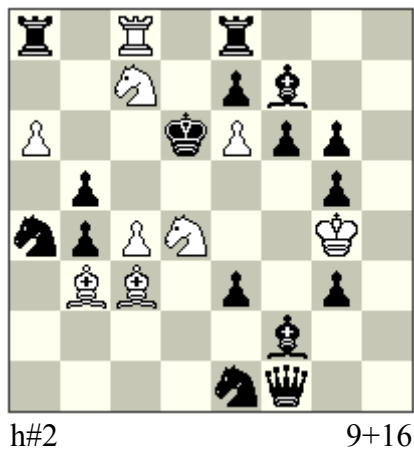
1...Bxf6? 3...R:d6! 1...Bxf4? ... 3...B:d6!

Avoiding to open black lines to d6.

Contrasting effects of line openings to the square d6. Model mates.

No.4

Marjan Kovačević
Uralski Problemist 25 JT 2018
1st Prize



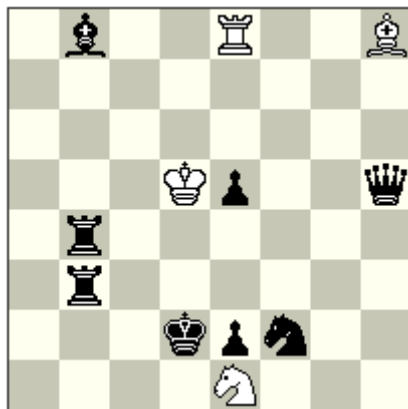
h#2 9+16
b) Sa4-d5 ; c) Pe3-d3

- a) **1.Qxc4 Sxb5+** (1...Sc~?) **2.Qxb5 Sxb5#**
 b) **1.Sxc7 Sxb5+** (1...Sd~?) **2.Sxb5 c5#**
 c) **1.Bxd4 c5+** (1...cxb5?) **2.Bxc5 Sxb5#**

Five cycles involving six white pieces: 1) cyclic opening of 3 white indirect batteries + 2) cyclic change of functions of 3 white pieces + 3) cyclic passive Zilahi + 4) cyclic active Zilahi + 5) cyclic white moves. The combination presented for the first time.

No.5

Marjan Kovačević
 Zoran Gavrilovski 50 JT 2018
 4th Prize



h#2.5 2 solutions 4+8

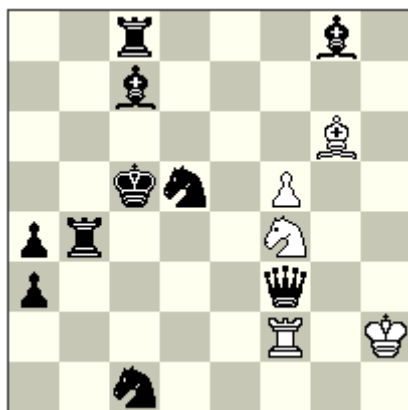
1...Bxe5 2.Qxe8! Bb2 3.Ke3 Bc1#

1...Rxe5 2.Qxh8! Rxe2+ 3.Kc3 Rc2#

Anticipatory battery destruction with direct unpin, temporary Novotny, Zilahi, Meredith.

No.6

Marjan Kovačević
World Cup 2017
3rd HM



h#3 b) Kh2->h4 5+10

a) 1.Kd6 (1.Se7? Rd2?) **Sd3!** (1...Rd2?) **2.Se7** (2.Kd7+?) **Rd2 3.Kd7+ Se5#**

b) 1.Kc4 (1.Sc3? Bf7?) **Se6** (1...Bf7?) **2.Sc3** (2.Kb3+?) **Bf7 3.Kb3+ Sd4#**

Indirect unpinning by Black and anticipatory unpinning by White, Black & White battery creation, Cross-checks.