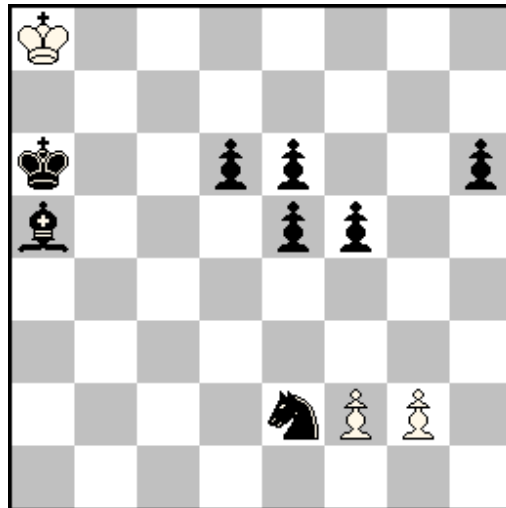


N° 1

Pierre TRITTEN

Olympic tourney, Baku 2016

1st HM



White : Ka8 Pf2 Pg2

Black : Ka6 Ba5 Se2 Pd6 Pe6 Ph6 Pe5 Pf5

h±6 (3+8) C+
2 solutions

Solution :

1.e4 g4 2.e3 g×f5 3.e×f2 f×e6 4.f1=R e7 5.Rb1 e8=S 6.Rb6 Sc7‡
1.h5 f4 2.h4 f×e5 3.h3 e×d6 4.h×g2 d7 5.g1=B d8=Q 6.Bgb6 Qd3‡

Pawn Zilahi, Excelsior and mixed AUW, showed for the first time

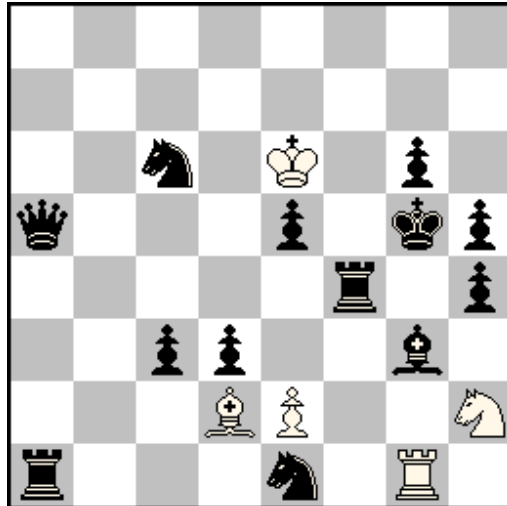
- Self-block on b6 by promoted black piece
- Model mates
- Open Meredith setting

N° 2

Pierre TRITTEN

JORGE J. LOIS 70th JUBILEE TOURNEY

1st HM



White : Ke6 Rg1 Bd2 Sh2 Pe2

Black : Kg5 Qa5 Rf4 Ra1 Bg3 Sc6 Se1 Pg6 Pe5 Ph5 Ph4 Pc3 Pd3

h‡2 (5+13) C+
b) ♜g6→h6

Solution :

a) 1.c2 e3 2.Rb4 e4‡
b) 1.Sc2 Sg4 2.Be1 Sf2‡

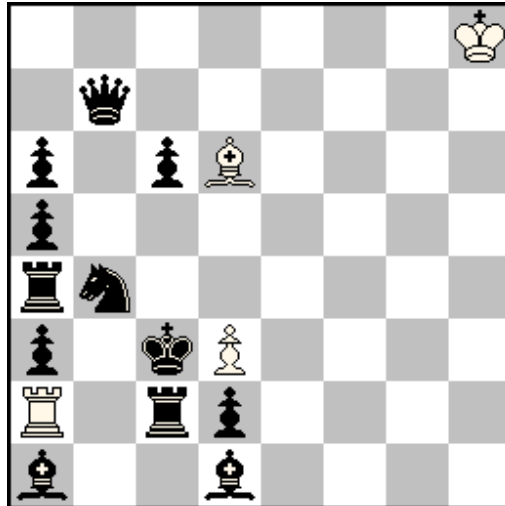
- First black move on same square, opening a black line
- Black and white bivalves
- Indirect unpin
- Pin mates

N° 3

Pierre TRITTEN

43rd World Chess Olympiad, Batumi 2018

6th HM



White : Kh8 Ra2 Bd6 Pd3

Black : Kc3 Qb7 Ra4 Rc2 Ba1 Bd1 Sb4 Pa6 Pc6 Pa5 Pa3 Pd2

h±3 (4+12) C+
2.1.1...

Solution :

1.Sd5 B×a3 2.Rd4 Bc1 3.Sb4 Ra3‡
1.Rc1 R×d2 2.Bb3 Rd1 3.Rc2 Be5‡

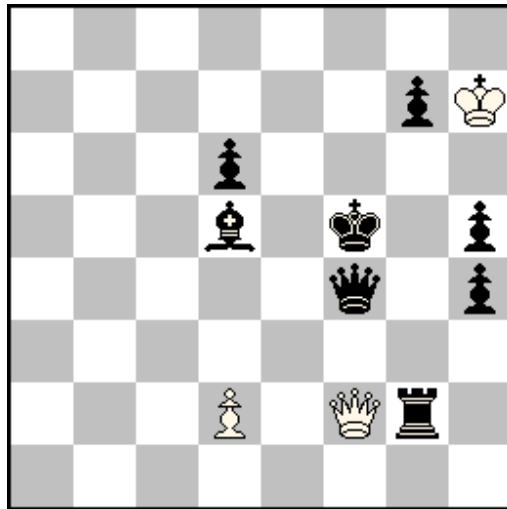
White takes advantage of the Klasinc theme performed by Black, by crossing the first vacated square.
Diagonal-orthogonal correspondence.

N° 4

Pierre TRITTEN

5^e Azemmour, Dresde 2017

4th Prize



White : Kh7 Qf2 Pd2

Black : Kf5 Qf4 Rg2 Bd5 Pg7 Pd6 Ph5 Ph4

h‡2 (3+8) C+
4.1.1.1

Solution :

- 1.Ke4 Kh8 2.Qf5 Qe3‡
- 1.Kg4 Kg6 2.Qg3 Qf5‡
- 1.Kg5 K×g7 2.Qg4 Qf6‡
- 1.Ke6 Kg8 2.Qe5 Qf7‡

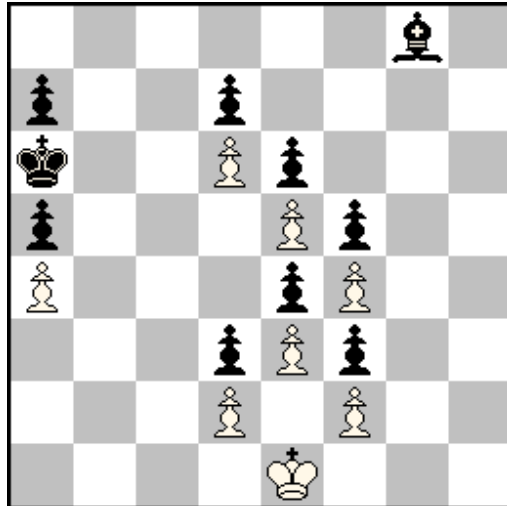
Kings and Queens duels
Skewer
Diagonal-orthogonal correspondence

N° 5

Pierre TRITTEN

Kenneth Solja 60 JT

1st Prize



White : Ke1 Pd6 Pe5 Pa4 Pf4 Pe3 Pd2 Pf2
Black : Ka6 Bg8 Pa7 Pd7 Pe6 Pa5 Pf5 Pe4 Pd3 Pf3

h‡10,5 (8+10) C+

Solution :

1...Kf1 2.Bf7 Kg1 3.Bh5 Kh2 4.Bg4 Kg3 5.Bh3 Kh4 6.Bf1 Kg5 7.Be2 Kf6 8.Bd1 Ke7 9.Bb3 K×d7
10.Bc4 Kc6 11.Bb5+ a×b5‡

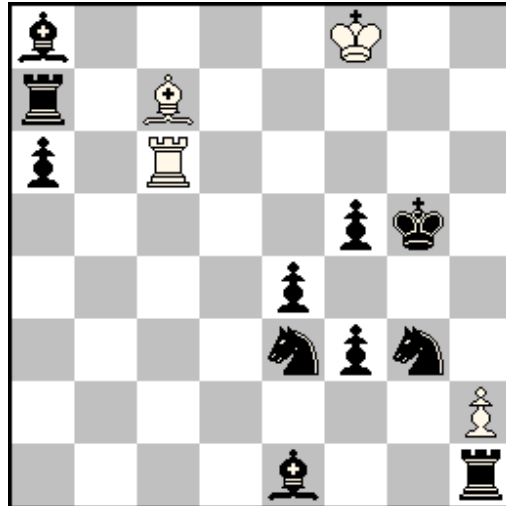
Brief encounter

N° 6

Pierre TRITTEN

Czechoslovaquia 100, 2018

3rd HM



White : Kf8 Rc6 Bc7 Ph2

Black : Kg5 Ra7 Rh1 Ba8 Be1 Se3 Sg3 Pa6 Pf5 Pe4 Pf3

h±2 (4+11) C+
4.1.1.1

Solution :

1.Bb7 Rd6 2.Kf4 Rg6±
1.Rb7 Bd6 2.Kf6 Bf4±

1.Sh5 Kf7 2.Bh4 Rg6±
1.Sg4 h×g3 2.Rh5 Bf4±

- HOTF, first couple of solutions showing black and white Grimshaw and reciprocal batteries, second couple showing guard of mating piece and two black self-blocks
- W2 moves by same pieces on the same squares in the two couples, with different starting squares and different motivation
- Diagonal-orthogonal correspondence in the two couples