

**ENTRIES FOR WORLD CHAMPIONSHIP IN
COMPOSING FOR INDIVIDUALS
(WCCI) 2016-18**

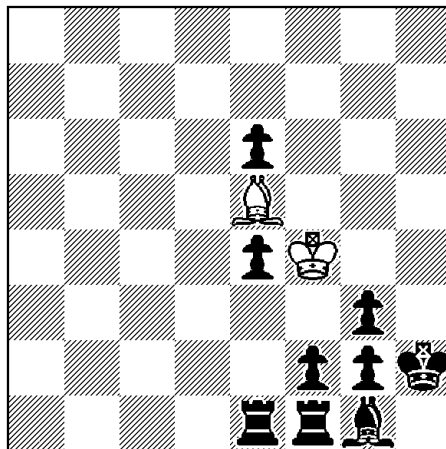
(E : Helpmates)

FROM S. K. BALASUBRAMANIAN (INDIA)

(E-Mail: skbala_bh2002@yahoo.co.in)

Note:

1. Problems have been arranged in chronological order of their publication.
2. All Problems have been computer tested using Popeye Version 4.77.
3. Theme/Gist of the theme for formal tourneys have also been given wherever applicable.

ENTRY No.1**S.K. Balasubramanian (India)****Prob. No. 797****"kobulchess.com", 31st Dec. 2016****(Award - Not yet Announced)**

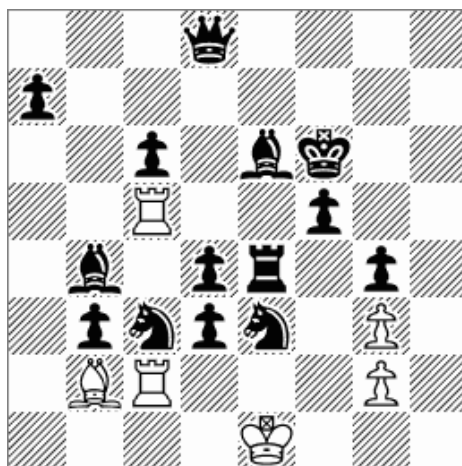
(2+9)

White: Be5 Kf4

Black: Re1 Pe4 Pe6 Rf1 Pf2 Bg1 Pg2 Pg3 Kh2

H #5**(C+ Popeye 4.77)****1.Kh3 Kg5 2.Bh2 Bxg3 3.Rh1 Be5 4.Bg1 Kf4 5.Kh2 Kg4 #****Comments by the Authors:**

1. **4 switchbacks** (2 by white and 2 by black).
2. **Meredith** Setting.

ENTRY No.2**S.K. Balasubramanian (India)****19th-21ST PLACE (6.9 Points)****10th WCCT, E-Section : Helpmates****(Award Date - July 2017)**

(6+14)

White: Bb2 Rc2 Rc5 Ke1 Pg2 Pg3

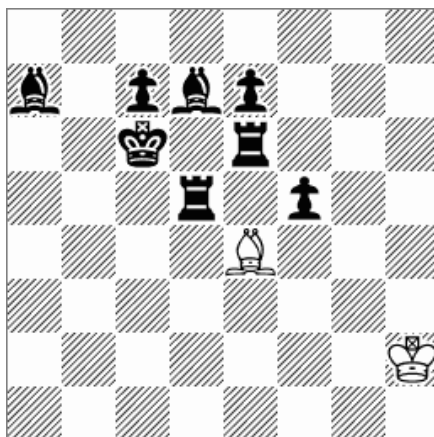
Black: Pa7 Pb3 Bb4 Sc3 Pc6 Pd3 Pd4 Qd8 Se3 Re4 Be6 Pf5 Kf6 Pg4

H#3 (a) Diagram (b) bKf6 --> b6**(C+ Popeye 4.77)**(a) 1.**S(e)d5+** Re2 2.Ke5 Bc1 3.Qf6 Bf4 #(b) 1.**Sb5+** Bc3 2.Ka5 Rc1 3.Qb6 Ra1 #

Theme : In each line of play of a helpmate in 3 moves, Black gives a battery check to the white king. Duplex allowed. Fairy pieces and conditions not allowed.

Comments by the Author:

1. One thematic move in each phase.
2. **Double pin mate (Only ONE in the tourney).**
3. Anticipatory self pin by bSs.
4. BQ selfblocks on the square vacated by bK..
5. Exchange of roles between wBb2 & wRc2.
6. wR & wB play to the same square on W2.
7. Model mates.

ENTRY No.3**S.K. Balasubramanian (India)****COMMENDATION****Quick Composing SUPERPROBLEM Thematic Tourney
TT-203, "The Helpmate, or There and Back Again"****(Award Date - 16.02.2018)**

(2+8)

White: Be4 Kh2

Black: Ba7 Kc6 Pc7 Rd5 Bd7 Re6 Pe7 Pf5

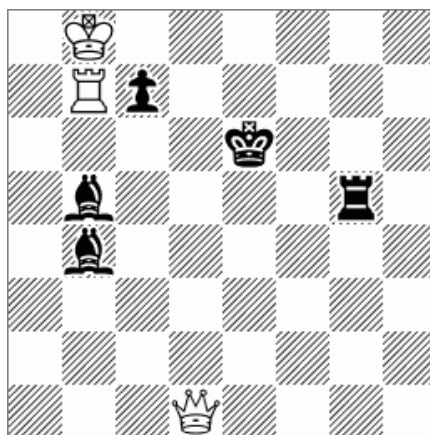
H # 5**(C+ Popeye 4.77)****1.Kb7 B*f5 2.Rb5 Kg3 3.Bc5 Kf4 4.R(e)b6 Ke5 5.Kc6 Be4 #****Theme :** It is required to compose a helpmate in which:

- on first move of solution White piece (not Pawn) moves from a square X to a square Y,
on last move the same piece returns from the square Y to the square X;
- on first move of solution Black piece (not Pawn) moves from a square x' to a square y',
on last move the same piece returns from the square y' to the square x'.

Zero Position are not allowed. Fairy Pieces and conditions are not allowed.

Comments by the Author:

1. **All balck moves are critical moves** with 3 criticl squares, b6.c5 & c6.
2. **Gravure** (8-10pieces) Setting._

ENTRY No.4**S.K. Balasubramanian (India)****2ND HM****"Gheorghe Ristea -75, Anniversary Tourney 2017"****(Award Date - December, 2018)****(Award was Published in Bulletin Problemistic, Nr.88 Oct-Dec 2018 issue)****(C+)****(3+5)**

White: Rb7 Kb8 Qd1

Black: Bb4 Bb5 Pc7 Ke6 Rg5

H # 2 (2 Solutions)**(C+ Popeye 4.77)****1.Pc6 Rf7 2.Re5 Qd7 #****1.Pc5 Rd7 2.Rf5 Qd6 #**

Theme : A black or white piece moves into solutions across two different fields. Duplex is allowed, but no fairy pieces and conditions are allowed.

Comments by the Author:

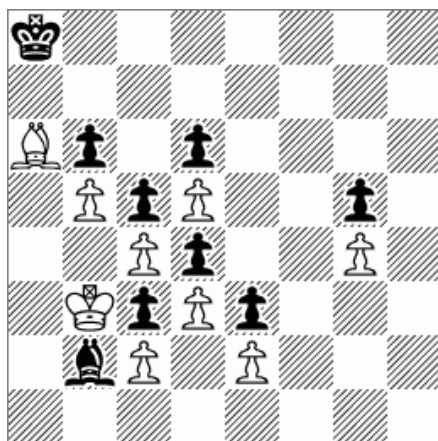
1. All 4 moves in both the solutions are Thematic.
2. Mates by black interference by the same pawn.
3. Self blocks by the same bR on two different squares.
4. Guards for mating piece by the same wR on two different squares.
5. **Gravure** (8 to 10 pieces) setting.

ENTRY No.5**S. K. Balasubramanian (India)****2ND PLACE (Version)**

Quick Composing SUPERPROBLEM Thematic Tourney

TT-218: "And Then There Were Captured None"

(Award Date - 29.12.2018)



(9+9)

White: Ba6 Kb3 Pb5 Pc2 Pc4 Pd3 Pd5 Pe2 Pg4

Black: Ka8 Bb2 Pb6 Pc3 Pc5 Pd4 Pd6 Pe3 Pg5

H # 13.5**(C+ Popeye 4.77)**

1...Ka2 2.Ba3 Kb1 3.Bb4 Kc1 4.Ba3+ Kd1 5.Bc1 Ke1 6.Bd2+ Kf1 7.Be1 Kg2 8.Bg3 Kf3 9.Be5 Ke4 10.Bf6 Kf5 11.Bd8 Ke6 12.Bc7 Kd7 13.Bb8 Kc8 14.Ba7 Bb7 #

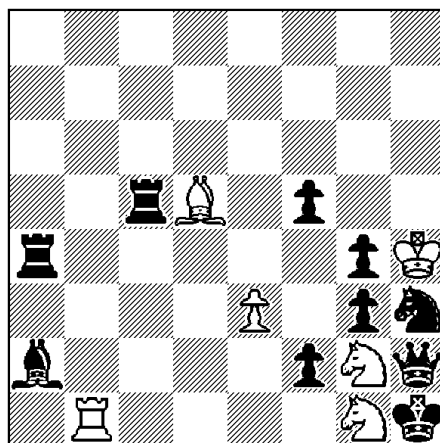
(Try: 1...Ka2 2.Ba1? Kb1 3.ZZ (now black is in zugzwang)).

Theme : Required a captureless helpmate with a single solution which has longest length. Fairy pieces and conditions, twins and extra-set pieces are not allowed. Each participant may submit no more than three entries (including joint works).

The winning problem will be the one with the longest solution. In the case of equality of solution length, an advantage will get those problems, which have less total number of units; in the case of equality is here too – which have less number of White units. The last criterion is time factor – the advantage will have those problems which were received earlier. As extra, there will be mentioned the problems anyhow related to New Year.

Comment by the Author:

- **Three Tempo moves and a switch back** by black bishop.

ENTRY No.6**S.K. Balasubramanian (India)****5th HM****"Zoran Gavrilovski - 50 JT 2018"****(Award Date - Dec 2018)****(Published in The Macedonian Problemist (TMP), Special issue No.57a,
(Supplement to issue No.57) Sept - Dec 2018)****(6+10)**

White: Rb1 Bd5 Pe3 Sg1 Sg2 Kh4

Black: Ba2 Ra4 Rc5 Pf2 Pf5 Pg3 Pg4 Kh1 Qh2 Sh3

H#2 (a) Diagram (b) Remove Pf2**(C+ Popeye 4.77)****(a) 1.R(c)c4 Sf3+ 2.K*g2 Sd4 #****(b) 1.Bc4 Se1+ 2.K*g1 Sd3 #****Theme :** Free theme**Comments by the Author:**

- Exchange of functions between three pairs of pieces (Ba2/Rc5, Rc1/Bd5, Sg1/Sg2)
- Sacrifice by white on B2.
- Black's self interference followed by white cutting off black's line.
- Black Grim-shaw.