

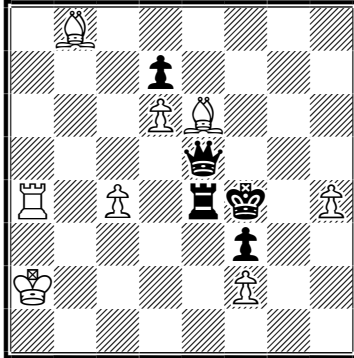
Problems are located as increase in pieces and moves

№1 Boris SHOROKHOV

Moscow Tu (Shakhmatnaya Kompozitsiya), 2016

1st Prize

1B6/3p4/3PB3/4q3/R1P1rk1P/5p2/K4P2/8



h#2 8+5

3.1.1.1.

b) Pd7→c5

a)

1.Qd4! c5(A) 2.Qxd6 Bxd6(B)#

1.Qxd6 Bxd6(B)+ 2.Re5 c5(A)#

1.Rxc4 Ba7 2.Re4 Be3#

b)

1.Rd4! d7(C) 2.Rxc4 Rxc4(D)#

1.Rxc4 Rxc4(D)+ 2.Qe4 d7(C)#

1.Qxd6 Ra7 2.Qe5 Rf7#

- HOTF 3x2
- Bl. tempo in same square
- AB-BA & CD-DC
- W1: a7 & bl. switchback
- Pin-mates (x6)

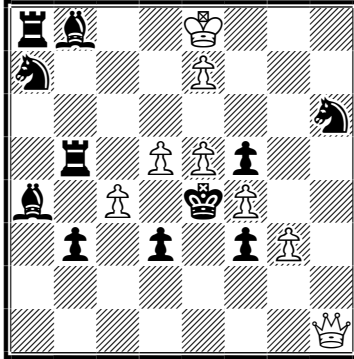
Problems are located as increase in pieces and moves

№2 Boris SHOROKHOV

E620 SuperProblem, 24-04-2018

?

rb2K3/n3P3/7n/1r1PPp2/b1P1kP2/1p1p1pP1/8/7Q



h#2 8+11

2.1.1.1.

b) Pd3→e3

a)

1.Sc8 Qa1 2.Bxe5(a) Qxe5#

1.Rxd5(b)+ Kf8 2.Rd4 Qe1#

b)

1.Sc6 Qd1 2.Rxd5(b) Qxd5#

1.Bxe5(a)+ Kd7 2.Bd4 Qb1#

- HOTF
- Changed functions of black batteries:
play/destruction by interference
- Shifted black moves Bxe5 and Rxd5 in pairs of solutions

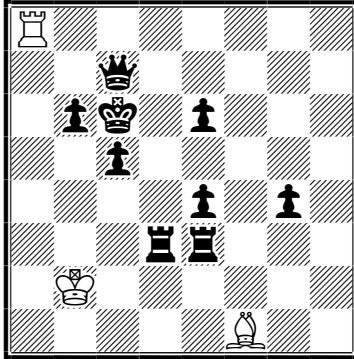
Problems are located as increase in pieces and moves

№3 Boris SHOROKHOV

SuperProblem, 2018

1st Prize

R7/2q5/1pk1p3/2p5/4p1p1/3rr3/1K6/5B2



h#2.5 3+9

b) Rd3→b7

c) -Rd3

d) Pc5→d6

a)1... Re8 2.Rd7 Bc4(A) 3.Kd6 Rxe6(B)#

b)1... Bc4 2.Qd6 Bxe6(B) 3.Kc7 Rc8(C)#

c)1... Ba6 2.b5 Bc8(C) 3.Kb6 Ra6(D)#

d)1... Ra4 2.Rd5 Ba6(D) 3.Kc5 Rc4(A)#

- Cyclically changed squares on which wh.B & wh.R play on mating moves c4e6-e6c8-c8a6-a6c4 (Probably, this feature is rendered for the first time)
- HOTF: a+d & b+c
- BK cross is performed exactly on B3
- 4 model echo mates
- Meredith

Problems are located as increase in pieces and moves

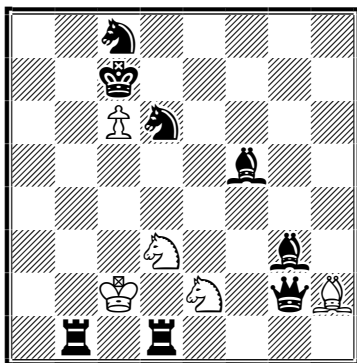
№4 Boris SHOROKHOV

XIX Russian Team Championship, 2016

(Shakhmatnaya Kompozitsiya)

1st Place

2n5/2k5/2Pn4/5b2/8/3N2b1/2K1N1qB/1r1r4



h#3 5+8

2.1...

1.Bf2(a) Sef4 2.Se4(b) Sb4 3.Rd8 Sfd5#

1.Se4(b) Sdf4 2.Bf2(a) Sd4 3.Rb6 Sfe6#

- Cyclic relay unpinning:
 - I) unpinned wh.Se2 (A) unpins bl.Sd5 (B)
unpinned bl.Sd5 (B) unpins wh.Sd3 (C)
 - II) unpinned wh.Sd3 (C) unpins bl.Bg3 (D)
unpinned bl.Bg3 (D) unpins wh.Se2 (A)
- B1B2-B2B1
- W1: f4
- Model mates

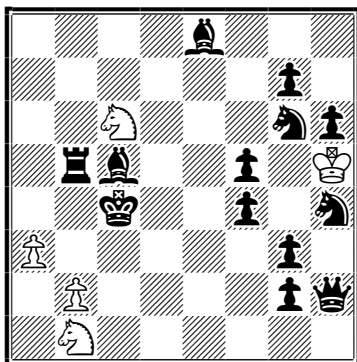
Problems are located as increase in pieces and moves

№5 Boris SHOROKHOV

6 FIDE World Cup, 2018

5th HM

4b3/6p1/2N3np/1rb2p1K/2k2p1n/P5p1/1P4pq/1N6



h#3 5+13

b) Rb5→d4

a)

1.Sf3?? mate (1... Sb4 2.Sd4 Sd2#)

1.Qg1? Sb4 2.Sf3 ?? 3.Sd4 Sd2#

1.Bd7 Sb4 2.Sf3+ Kxg6 3.Sd4 Sd2#

b)

1.Se5?? mate (1.. Sc3 2.Sd3 Sa5#)

1.Bd7? Sc3 2.Se5 ?? 3.Sd3 Sa5#

1.Qg1 Sc3 2.Se5+ Kxh4 3.Sd3 Sa5#

- Tempo tries
- Changed functions of black batteries:
play/destruction in each solution
- Model mates

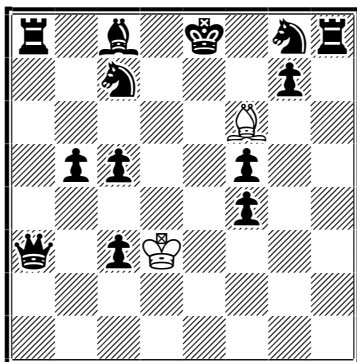
Problems are located as increase in pieces and moves

№6 Boris SHOROKHOV

SuperProblem, 2017

2nd Prize

r1b1k1nr/2n3p1/5B2/1pp2p2/5p2/q1pK4/8/8



h#5 2+13

b) Pc5→e5

a)

1.f3 Ke3 2.Sh6 Kf4 3.O-O Kg5 4.Kh8 Kg6 5.Sg8 Bxg7#

b)

1.Bd7 Bxe5 2.O-O-O Kd4 3.Qa8 Kc5 4.Kb8 Kb6 5.Bc8 Bxc7#

- Double Black-Black Klasinc involving both castlings (bl.Sg8→bl.K & bl.Rh8 + bl.Bc8→bK & bl.Ra8) (Probably, this feature is implemented for the first time)

bbs64@mail.ru