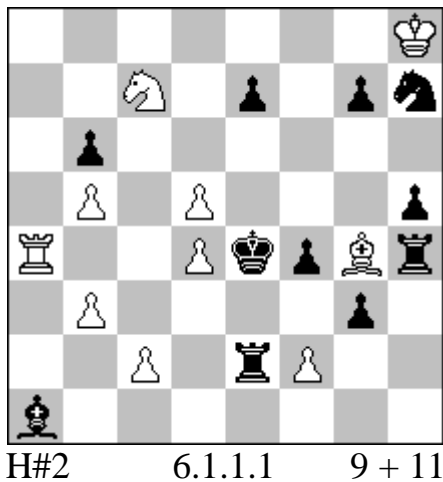


No. 1

Paz Einat Variantim 2018



- The first example of a **Domino cycle** in helpmates!
- Each of the thematic pieces of both black and white makes two moves

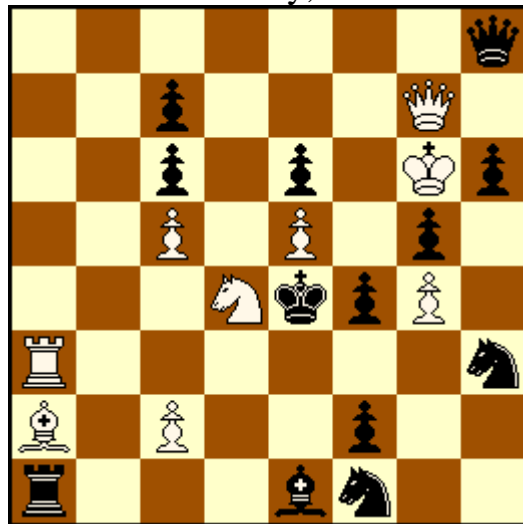
	<u>Black element</u>	<u>White element</u>
1.e6 Se8 2.exd5 Sd6 #	Self-block by BPe7 – a	Mate by WSc7 - A
1.e5 Ra8 2.exd4 Re8 #	Self-block by BPe7 – a	Mate by WRa5 – B
1.Rd2 Rxa1 2.Rxd4 Re1 #	Self-block by BRe2 – b	Mate by WRa5 - B
1.Re3 Bxh5 2.Rf3 Bg6 #	Self-block by BRe2 – b	Mate by WBg4 – C
1.Sg5 Bxe2 2.Sf3 Bd3 #	Self-block by BSh7 – c	Mate by WBg4 - C
1.Sf6 Se6 2.Sxd5 Sg5 #	Self-block by BSh7 – c	Mate by WSc7 - A

paz@pazeinat.com

No. 2

Paz Einat 3rd Prize

6th Azemmour Ty, Ohrid 2018



H#2

9+13

a) 1.Qd8 Qh7 (Kf6?) 2.Qxd4 Kf6 #

b) 1.Bc3 Bb1 (c4?) 2.Bxd4 c4 #

c) Qf8 Ra4 (Sf5?) 2.Qf3 Sf5 #

b) Ra1→f8

c) Pf4→d2

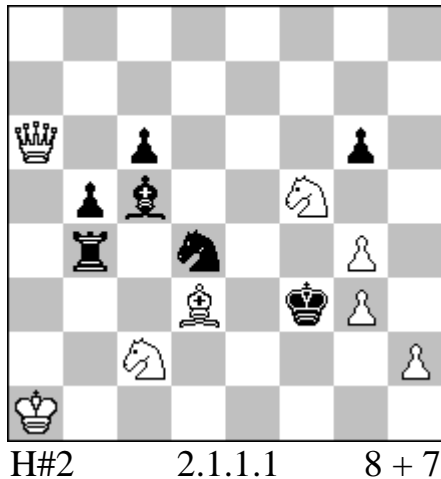
- All 6 white piece types participate in the 3 solutions
- In each solution a different pair of white pieces create a battery and fires it
- Dual avoidance of white move order
- Unified play with the battery mates replacing the square-guard abandoned by white's 1st move

paz@pazeinat.com

No. 4

Paz Einat 1st Place

Quick Composing tourney,
Annual Meeting Tel Aviv 2018
Published in Variantim 2018



1.Se2 Qc8 (Qa2? 2.Rxg4 Se1?) 2.Bf2 Sh4 #

1.Se6 Qa2 (Qc8? 2.Bf2 Sh4?) 2.Rxg4 Se1 #

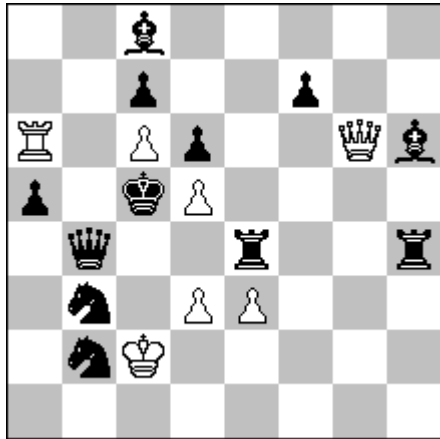
- White ambush for guarding a square by line opening by the white knights
- Dual avoidance by anticipatory closure of the other ambush line
- Line opening (anti-Nowotny) for the black pieces enabling self-block of squares guarded by the white ambush in the other solution

paz@pazeinat.com

No. 5

Paz Einat
2nd Place

Quick Composing tourney,
Annual Meeting Tel Aviv 2016
Published in Variantim 2016



H#2

7 + 12

b) wRa6→h5

a) 1.Re6 dxe6 (Qf5?) 2.Kd5 Qf5 #

b) 1.Rf4 exf4 (Qg1?) 2.Kd4 Qg1 #

paz@pazeinat.com

No. 6

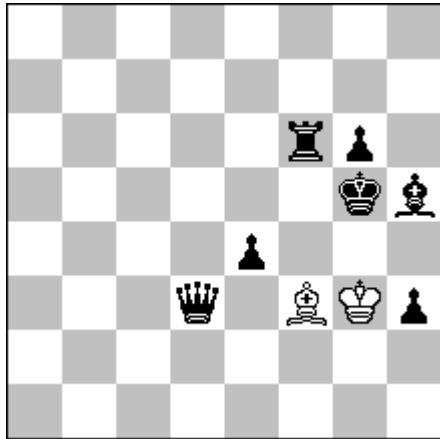
Paz Einat

1st Com

Pre-Annual Meeting

Composing tourney 2018

Published in Variantim 2018



1.Bg4 Kh2 (Kf2?) 2.Kh5 Bxe4 3.g5 Bf3
4.Rh6 (Qg6?) Kg3 5.Qg6 Bxg4 #

- Anticipatory sacrifice on black's 1st move – captured by the mating move
- Two white switchbacks

paz@pazeinat.com