

WCCI 2016-2018

From Olivier SCHMITT

Postal address : 27 rue Jean Louis BALZAC, 83500 LA SEYNE SUR MER, FRANCE

E-Mail : olsc@free.fr

Problem n°1 :

THE PROBLEMIST - 2018



6+13 vv

#11

N° C11699 - Vol 26 N° 11

C+

Tries : 1Tf2 ? (menace 2Tf1 mat) Fa6 ! ; 1Td2 (menace 2Td1 mat) Rg1 2Fc2 ? (menace 3Fh2+ Rh1 4Fxe4 mat or 3Fxe4 ~ 4Fh2 mat) d5 !

Key : 1Td2 ! Rg1 2Fh2+ Rh1 3Fd6 ! Rg1 4Fc2 ! (not 4Cxb4 ? gxb4 5Fc2 Cg5 !) 4..Cf6 5Cxb4 ! gxb4 6Fh2+ Rh1 7Ff4 ! Rg1 8Fd3 ! (menace 9Td1+ Rf2 10Tf1 mat) exd3 9Tg2+ Rh1 and 10Tf2 ! ~ 11Tf1 model mat

In order to close the a6/f1 line, White must first avoid the opening of the c7/f7 line in the two foreplans.

(5..Fa5 6Tg2+ Rh1 7Fxe4 ! Fb4+ 8Ra2 or 8Ra4 Cxe4 9Th2+ Rg1 10Cf3 mat)

Problem n°2 :

STRATEGEMS - 2017



N° M1474 - SG 79

2nd Prize

7+14 v

#20

Try : 1Td6+ ? exd6

Key : 1b3 ! (menace 2Fc4 mat) **axb3 2Fa4** (menace 3Fxb3 mat) **Rc4 3Ce5+ Rd5 4Cxd7 !** (not immediately 4Cg6 ? Rc4 5Fb5+ Rd5 6Cxe7+ Re5 7Cg6+ Rf5 !) **4..Rc4 5Ce5+ Rd5 6Cf7 !** (again 6Cg6 ? Rc4 7Fb5+ Rd5 8Fc6+ Rd6 ! or 8Cxe7+ Re5 9Cg6+ Rf5) **6..Rc4 7Fb5+ Rd5 8Fc6+ ! Rxe6 9Fe8+ Rd5** then **10Fa4 ! Rc4 11Ce5+ Rd5 12Cg6 ! Rc4 13Fb5+ Rd5 14Cxe7+ Re5 15Cg6+ Rd5 16Fa4 Rc4 17Ce5+ Rd5 18Cf7 ! Rc4 19Fb5+ Rd5** and **20Td6 mat**

In this logical problem, the b3 square is blocked then the pawn d7 eliminated in order to annihilate the pawn e6 which open the b6/g6 and d7/g4 lines. This active collaboration of the duo bishop b5/white knight, three switchbacks of the bishop and two of the knight, allow finally to eliminate the pawn e7.

(9..Rf5 10Fd7+ e6 11Txe6 Rg4 12Tf6+ Rg3 13Ff2 mat)

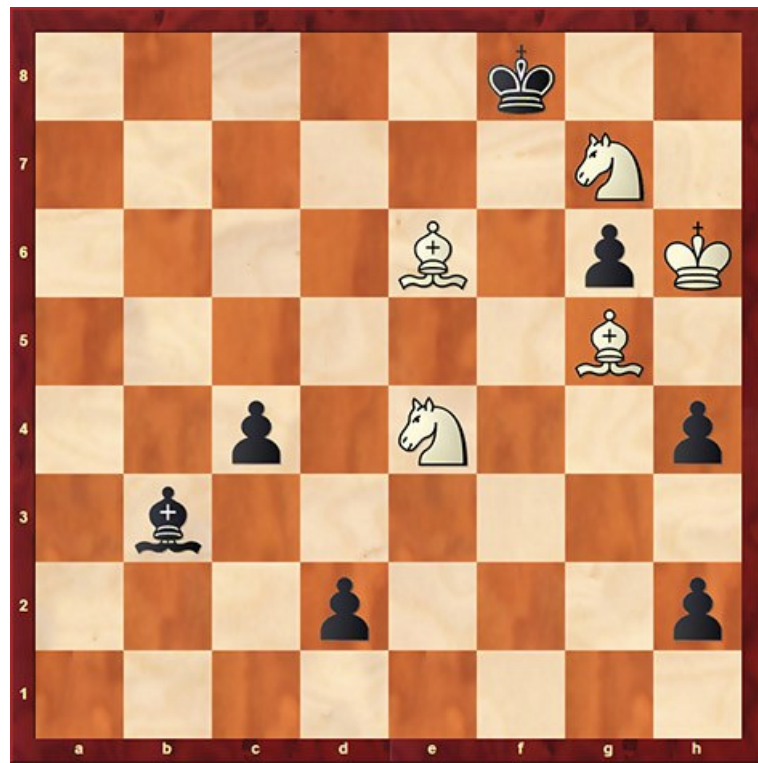
Tested OK with *Gustav* allowing three flight squares maximum for the black King during the solution.

Problem n°3 :

THE PROBLEMIST - 2016

N° C11453 - Vol 25 N° 8

1st Prize



5+7 vv

#16

Tries : 1Ff4 ? (menace 2Fd6 mat) d1=D ; 1Fxd2 ? c3 !

Key : **1Cf6 !** (menace 2Cd7 or 2Ch7 mat) **Re7 2Cfe8+ Rf8 3Fe3 Re7 4Fc5+ Rd8 5Fd4 Re7 6Ff6+ Rf8 7Fc3 Re7 8Fb4+ Rd8 9Fxd2 Re7 10Fg5+ Rf8 11Cf6 Re7 12Ce4+ Rf8 and 13Ff4 Re7 14Fd6+ Rd8 15Cg5 ~ 16Cf7 model mat**

In this Meredith two white pieces collaborate in the foreplans in order to eliminate the pawn d2.

Tested OK with *Gustav* allowing four flight squares maximum for the black King during the solution.

Problem n°4 :

5th FIDE WORLD CUP - 2017

2nd Prize

C+



7+10 vvv

#15

Tries : 1Cd6 ? exd6 2Txd6 (menace 2Ta6 mat) Th6 ! ; 1Te6 ? (same menace) Cxe6 !
The knight f8 has to be deviated first but 1Te5 ? (menace 2Txc5 mat) g1=D ! is too fast.

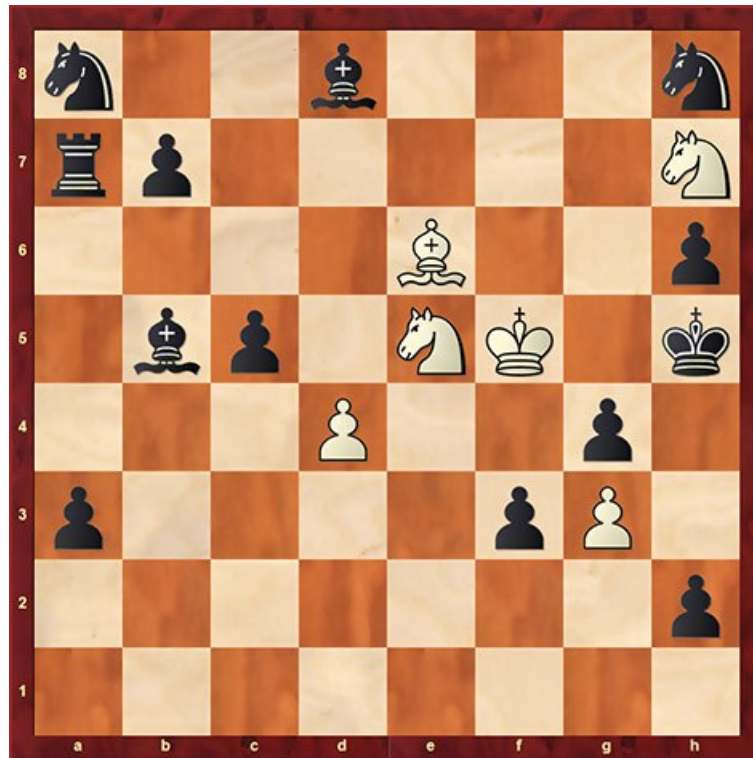
Key : **1Tb3 !** (menace 2Tb5 mat) **Ra4 2Te3+ ! Ra5 3Te5 ! Cd7 !** then **4Tb3** (not immediately 4Te6 ? Th6 !) **Ra4 5Th3+ ! Ra5 6Te6 ! fxe6 7Tb3** (again not at once 7Cd6 ? g1=D !) **Ra4 8Tf3+ ! Ra5** and **9Cd6 ! exd6 10Tb3 Ra4 11Td3+ !** switchback **Ra5 12Txd6 Cb8 13Tb6 Cc6+ 14Txc6 g1=D 15Ta6 mat**

The rook d3 intercept successively the lines g1/c5, h2/h6, h1/b7 in the three foreplans. The goals are to deviate the knight f8 then to play two sacrifices which close the 6th row and deviate the pawn e7.

(**3..Ce6 4Tb3 Ra4** (4..Cd4 5Tb6 Th6 6Txc5+ Cb5+ 7Txb5 mat) 5Tf3+ Ra5 6Cd6 exd6 7Tb3 Ra4 (7..Cd4 8Tb6 Cc6+ 9Txc6 ~ 10Ta6 mat) 8Td3+ Ra5 9Txd6 Cc7 10Txc5+ Cb5+ 11Txb5 mat ; **3..Th5 4Tb3 Ra4 5Tf3+ Ra5 6Cd6 exd6 7Tb3 Ra4 8Td3+ Ra5 9Txd6 Th6 10Txc5 mat**)

Problem n°5 :

SCHACH - 2018



6+13 v

#12

N° 18719 - January

C+

Try : 1Cf6+ ? Fxf6 2Rxf6 (menace 3Fxf6 mat) Fd7 ? 3Cd3 ! etc. but 2..Ta6 ! refute.

Key : **1Re4 !** (same menace) **Fc6+ 2Rd3 ! Fb5+ 3Rd2 ! Fa5+ 4Re3 ! cxd4+ 5Re4 Fc6+ 6Rf5** (menace 7Cf6 mat) **Fd8** and **7Cf6+ Fxf6 8Rxf6 Fd7 9Cd3 ! Cg6 10Cf4+ ! Cxf4 11Ff7+ Cg6 12Fxf6** model mat

A roundtrip of the white king in the foreplan force a pre-interception of the 6th row by the bishop b5, avoiding next a pin.

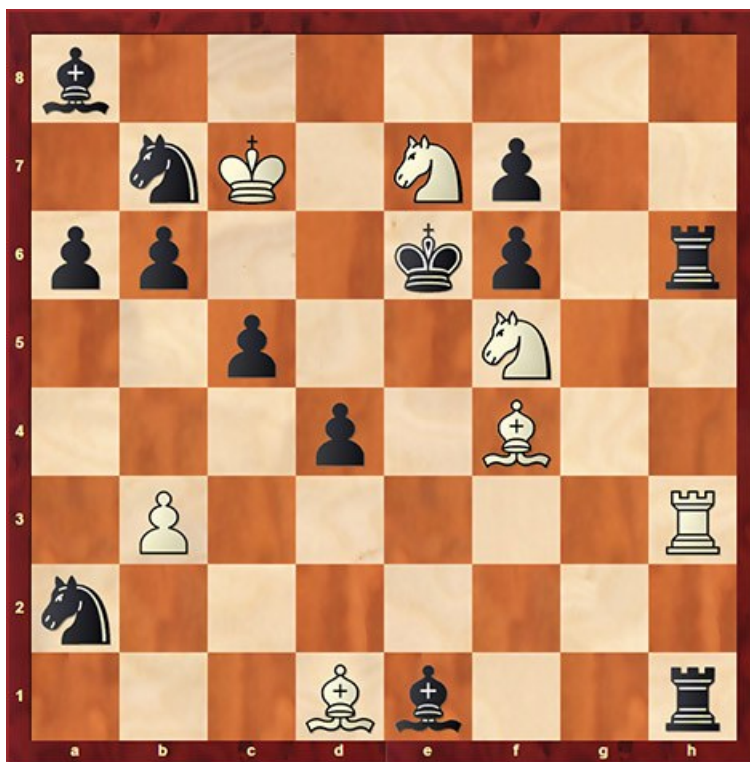
(**3..Fg5+ 4Rc3 ! cxd4+ 5Rb3 Fa4+ (Fc4+) 6Ra2 ! (Rxc4) Fb3+ (Ta4+) 7Rxb3 (Rd3) ~ 8Fxf6 mat ; 2..c4+ 3Rd2 c3+ (3..Fa5+ (Fg5+) 4Re3 (Rc3) Fd2+ 5Rxd2) 4Rxc3 Fa5+ 5Rd3 Fb5+ 6Re3 Fd2+ 7Rxd2 or 4Re3 Fg5+ 5Rd3 Fb5+ 6Rxc3 Fd2+ 7Rxd2)**)

Problem n°6 :

THE PROBLEMIST - 2018

N° C11671 - Vol 26 N° 9

C+



7+13 vvvv

#8

Tries : 1Cg7+ ? Rxe7 2Fd6+ Cxd6 ; 1Ff3 ? (menace 2Fd5 mat) Cb4 ? 2Fxb7 etc. but 1..Cc3 ! 2Fxb7 Cb5+ ! refute ; 1Fe2 ? (menace 2Fc4 mat) b5 2Ff3 Fa5+ ! (not 2..Cb4 ?/Cc3 ? 3Fxb7/Fc6 because of the interceptions C/F) ; 1b4 ? (menace 2Fb3+) Txb3 !

Key : **1Te3+** ! (close the h3/b3 line) **1..dxe3 2b4** ! (close the e1/a5 line) **2..c4 3Fe2** ! (force a block of the b5 square) **3..b5 4Ff3** ! (in order to eliminate a defender, the knight b7) **4..Cxb4 5Fxb7** (menace 6Fc8 mat) **Cd5+ 6Fxd5+ Fxd5** and **7Cg7+ ! Rxe7 8Fd6** model **mat**

This logical problem consists of four foreplans.

(**2..b5 3Ff3** etc. mate in #4 like in the main line ; **4..Cc3 5Fc6** (menace 6Fd7 mat) Cc5 6Cd4+ or 6Cg7+ Rxe7 7Fd6 mat ; **5..Fxb7** or **5..Th8 6Cg7+**)