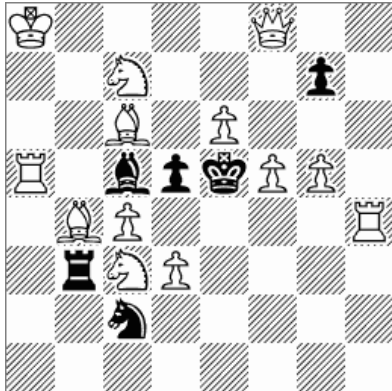


No. 1



Mate in 2 moves (13+6)

**MT Rudenko 2017, 6. Commendation
Published in Problemist of Ukraine, No.15, 2017**

**Stanislav VOKÁL, Slovakia, 04401 Drienovec 536
e-mail: stanislav.vokal@upjs.sk**

Set:

1. – Bxf8 2.Rxd5x

Tries:

1.Bxd5? ~ 2.Re4x, but 1. – Bxf8!

1.cxd5? ~ 2.Re4x, but 1. – Rxb4!

1. – Bxf8 2.d6x

1.S3xd5? ~ 2.Re4x, but 1. – Rxd3!

1. – Bxf8 2.Se7x (S from c3)

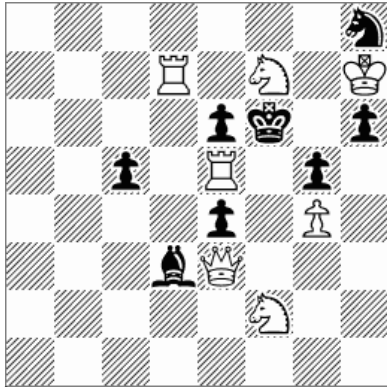
Solution is:

1.S7xd5! ~ 2.Re4x

1. – Bxf8 2.Se7x (S from c7)

“The choice of creating a battery with inputs on the same field associated with the mat change. In a set after 1 ... Bxf8 follows Rxd5x. In tries it is otherwise.”

No. 2



Mate in 2 moves (7+8)

The Problemist, March 2018, №C11640

Stanislav VOKÁL, Slovakia, 04401 Drienovec 536
e-mail: stanislav.vokal@upjs.sk

Sets:

1. – Be2, Bc4 2.Sxe4x, 1. – h5 2.Qxg5x

Tries:

1.Sxg5? ~ 2.Rxe6x, Qf4x, but 1. – Kxe5!

1. – Bc4 2.Qf4x, 1 - hxg5 2.Qxg5x

1.Rxg5? ~ 2.Qf4x, but 1. – e5!

1. – Sg6 2.Rxg6x, 1 - hxg5 2.Qxg5x

1.Rxe4? ~ 2.Qf3x, but 1. – e5!

1. – Sg6 2.Rxe6x, 1 – Be2 2.Rxe6x,

1 – Bxe4+ 2.Sxe4x

Solution:

1.Qxe4! ~ 2.Rxe6x

1. – Bc4 2.Qf3x, 1. – Bxe4+ 2.Sxe4x

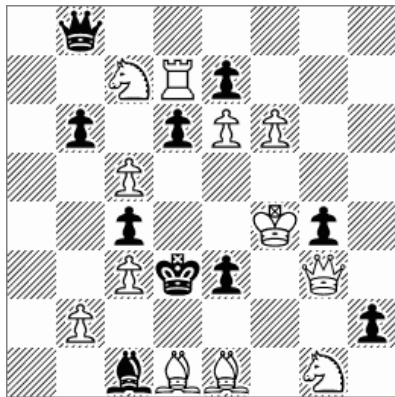
1.Qd4? ~ 2.Rf5x, 1. – cxd4!

1.Qxd3? ~ 2.Sxe4x, 1. – Sxf7!

1.Sxd3? ~ 2.Qf2x, 1. – Sg6!

“Self-pinning tries and key.”

No. 3



Mate in 2 moves (12+10)

Die Schwalbe, Dec. 2018, Heft 294, Band XXXIII, p.664, №17618

Stanislav VOKÁL, Slovakia, 04401 Drienovec 536

e-mail: stanislav.vokal@upjs.sk

Sets:

1. – Bxb2, d5, exf6 2.Qxe3x, Rxd5x, Rxd6x

Tries:

1.Sa6? ~ 2.Sb4x, 1. – bxc5 2.Sxc5x, but 1. – d5+!

1.Sd5? ~ 2.Sb4x, but 1. – bxc5!

1. – dxc5+! 2.Sc7x!

1.Sh3? ~ 2.Sf2x, 1. – gxh3 2.Qg6x, but 1. – h1S!

1.Se2? ~ 2.Sxc1x, 1. – Bxb2 2.Qxe3x, but 1. – Bd2!

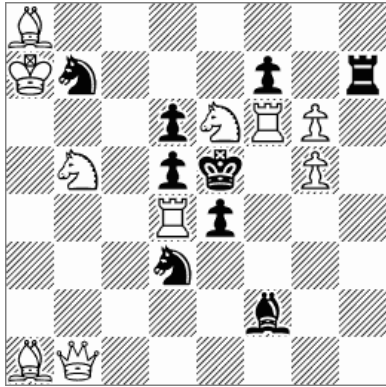
Solution is:

1.Sf3! ~ 2.Se5x

1. – e2+ 2.Sd2x!

1. – gxf3 2.Qg6x, 1. – exf6 2.Rxd6x

No. 4



Mate in 2 moves (10+9)

Pravda, №4133, January 26, 2017

Stanislav VOKÁL, Slovakia, 04401 Drienovec 536
e-mail: stanislav.vokal@upjs.sk

Tries:

1.Sc5? ~ 2.Sd7x/Rxe4x

1. – Bxd4+, Sdxc5, Sbxc5 2.Bxd4x, Rxe4x, Rxd5x

1. – fxg6 2.Rxe4x, 1. – Sb2 2.Sd7x

1. – dxc5!

Solution:

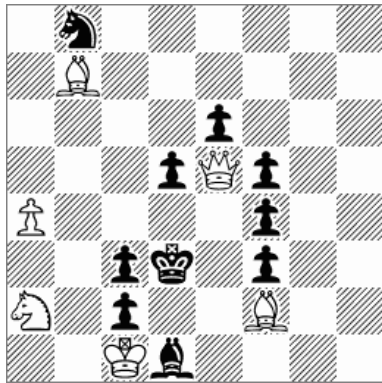
1.Sd8! ~ 2.Sd7x

1. – Bxd4+, Sdxc5, Sbxc5 2.Bxd4x, Rxe4x, Rxd5x

1. – fxg6 2.Sxg6x

“Surprising unpinning of the Rd4 after moves of black knights to c5 is associated with the change of one mat after 1 ... fxg6 2.Sxg6x.”

No. 5



Mate in 2 moves (6+10)

The 6th FIDE WCC, Section A, C 1.2.2018, 7. Commendation

Stanislav VOKÁL, Slovakia, 04401 Drienovec 536

e-mail: stanislav.vokal@upjs.sk

Set play:

1. – Be2, Kc4, d4 2.Qd4x, Qxc3x, Qb5x

1. – Sb8~ 2.Ba6x

Try:

1.Bc8? – d4!

1.Ba8? – Sb8~!

1.a5? – Kc4!

Solution:

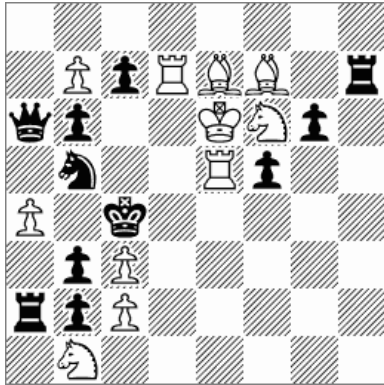
1.Qxe6! tempo

1. – Be2, Kc4, d4 2.Qxd5x, Qxd5x, Sb4x

1. – Sb8~ 2.Ba6x

“A mutate with three changes.” – from the judge comments

No. 6



Mate in 2 moves (11+11)

Pravda, May 10, 2018, №4199

Stanislav VOKÁL, Slovakia, 04401 Drienovec 536

e-mail: stanislav.vokal@upjs.sk

Set plays:

1. - Sxc3 2.Sd2x, 1. - Sd4+ 2.Rxd4x

Tries:

1.Sxh7? hr. 2.Kf6x

1. - Sxc3, Sd4+, Sd6 2.Sd2x, Rxd4x, Rxc7x, but 1. - Qxb7!

1.Bb4? hr. 2.Sd2x

1. - Rh2 2.Ke7x, 1. - Sd4+ 2.Rxd4x, but 1. - Sxc3!

1.Rd3? hr. 2.Sd2x

1. - Rh2 2.Kd7x, 1. - Sd4+ 2.Rxd4x, but 1. - bxc2!

1.Se4? hr. 2.S1d2x, S4d2x

1. - Rh2 2.Kf6x, 1. - Sd4+ 2.Rxd4x, but 1. - fxe4!

Solution:

1.Re3! ~ 2.Sd2x

1. - Rh2 2.Ke5x, 1. - Sd6 2.Rxc7x, 1. - Sd4+ 2.Rxd4x

“King’s mates on the fields which were left by white figures.”