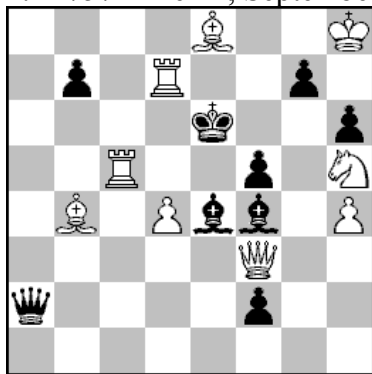


No.1 Živko Janevski, zivko@t-home.mk

2.Pr 7574 Phenix, September, 2016



#2

9+9

1.Tb5?[2.Te7#(A)] Ld6!

1.- Lg5 2.Te5#;

1.Tcd5!?[2.Lf7#, 2.Te7?] Da8!

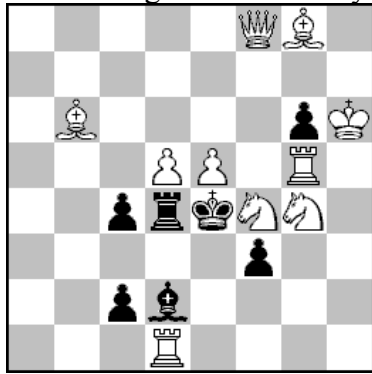
1.- Ld5:,Dd5: 2.Te7#(A), 1.- Ld6 2.T5d6:#;

1.Tf5:![2.Sg7:#], 1.- Lf5: 2.Te7#(A); 1.- Kf5:/Le5 2.Dh3/Te5:#

C+

White Threat Correction, transferred mates and sacrificial flight-giving key.

No.2 Živko Janevski, zivko@t-home.mk
2.Com Belgrade Internet Ty 2018 (01.08.2018)



#2

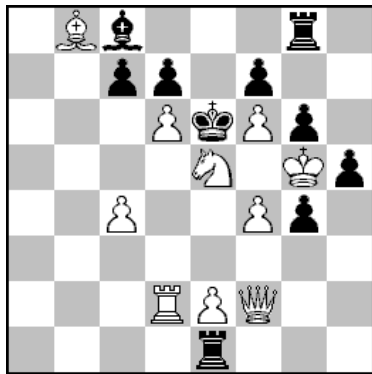
10+7

* 1.- Td3 2.Sf2#
1.e6?(2.Te5#) f2!
1.- Lf4: 2.Td4:#, 1.- Td5: 2.Sf2#;
1.Sh3?(2.Shf2#) cd1S!
1.- Le3 2.Sf6#, 1.- Lg5:+ 2.Sg5:#
1.- Kd3 2.Df3:#;
1.Se6!(2.Sc5#)
1.- Td3 2.Sf6#, 1.- Td5: 2.Sf2#,
1.- Kd3 2.Df3:#, 1.- Kd5: 2.Da8#,
1.- Lg5:+ 2.Sg5:#, 1.- Lb4 2.Td4:#
C+

Changed, transferred mates and check provocation flight-giving key

No.3 Živko Janevski, zivko@t-home.mk

1956 The Macedonian Problemist , September-December, 2016



#2

10+10

* 1.- cd6 2.Td6:#;

1.De3?(A)[2.Sc6,Sg6:,Sg4:,Sf3] Te2:!;

1.S~?[2.De3#(A)] Lb7!

1.- Te2: 2.De2:#;

1.Sd7:?[2.Sc5#, 2.De3?] Kd7:!

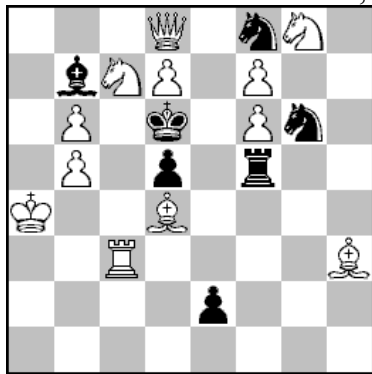
1.- Ld7: 2.De3#(A). 1.- cd6 2.Td6:#;

1.Sd3![2.Sc5#, 2.De3?] 1.- cd6 2.De3#(A), 1.- Kd6: 2.Db6#;

C+

White Correction, Threat Correction, changed mates,
transferred mates, defences on the same square and flight-giving key.

No.4 Živko Janevski, zivko@t-home.mk
 Z953 Problem-Forum 2018, June 2018



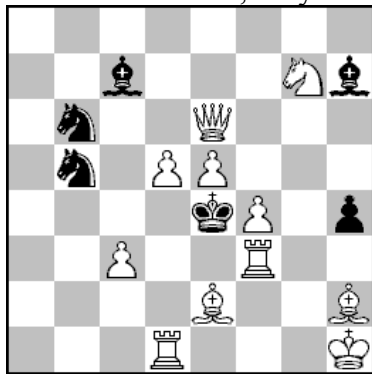
#2

12+7

1.Sh6!(2.Sf5:#)
 1.- T~(Tf4(x)) 2.Se8#(A), 1.- Te5!(y) 2.Lc5#(B),
 1.- Sh4,Se7 2.De7:#;
 1.Te3?(2.Se8#(A)(2.Lc5#?)) Te5!(y)!
 1.- Se5 2.De7#;
 1.De8?(2.Lc5:#(B)(2.Se8#?) Tf4!(x)
 1.- Se7/Sd7:,Se6 2.De7:/De6#;
 1.Se7?(2.Sf5:#) Sh4!
 1.~ T/Te5! 2.Se8/Lc5#;
 C+

Hannelius theme and Black Correction.

No.5 Živko Janevski, zivko@t-home.mk
7803 Phenix 2017, May-June, 2017



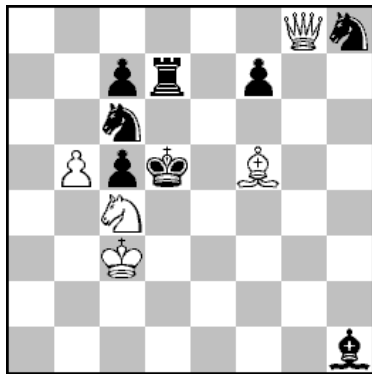
#2

11+6

* 1.- Sd5:/Le5:/Lf5 2.Dd5:/De5:/Def5:#
1.Tdd3?(2.Tde3,Tfe3#) Sc4!
1.- Sd5: 2.Dd5:#;
1.Tdf1?(2.Ld3#) Sc3:!
1.Tfd3?(2.Lf3#) Sd4!;
1.Th3?(2.Ld3#) Sc3:!
1.Dh3?(2.Te3#) Sc4!
1.- Sd5:/Sd4 2.Ld3/Td4:#;
1.Dh6?(2.Dh7:#) Lf5!
1.- Lg6,Lg8/Sd6,Sd4 2.Dg6/Td4#;
1.Dg4!(2.f5#)
1.- Sd5:/Le5:/Lf5/Sd4 2.Ld3/fe5/Dgf5:/Td4:#
C+

Changed mates.

No.6 Živko Janevski, zivko@t-home.mk
1473 Polish Chess Federation Ty 2018, (05.06.2018)



#2

5+8

1.De8!(2.Dd7:#)

1.- Td~(Te7(x))! 2.Dc6:(A)#

1.- Td6:!(y) 2.Se3(B)#;

1.Da8?[2.Dc6:(A)#] Td6!(y);

1.Dg3?[2.(2.Se3(B)#] Te7!(x);

Hannelius theme and Black Correction.