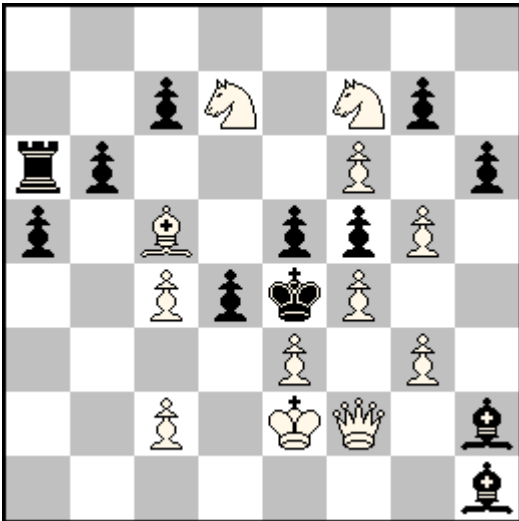


Francesco SIMONI

Sinfonie Scacchistiche 2016
2° Prize



8/2pN1Np1/rp3P1p/p1B1ppP1/2PpkP2/4P1P1/2P1KQ1b/7b

#2 (12+12) C+

1.e×d4? [2.Qe3‡] A
 1...e×f4 2.Q×f4‡ B
 1...Bf3+ 2.Q×f3‡
 1...e×d4 2.Q×d4‡
 but 1...Bg1!

1.f×e5? [2.Qf4‡] B
 1...h×g5 2.S×g5‡ C
 1...Bf3+ 2.Q×f3‡
 1...d3+ 2.c×d3‡
 but 1...B×g3!

1.g×h6? [2.Sg5‡] C
 1...g×f6 2.S×f6‡ D
 1...Bf3+ 2.Q×f3‡

1...d3+ 2.c×d3‡
 but 1...g×h6!

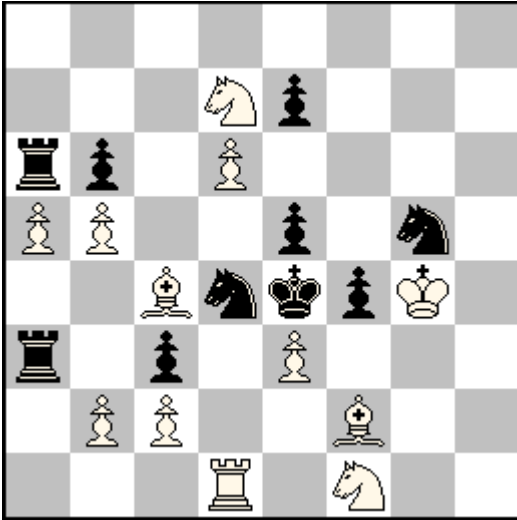
1.f×g7? [2.Sf6‡] D
 1...b×c5 2.S×c5‡ E
 1...Bf3+ 2.Q×f3‡
 1...d3+ 2.c×d3‡
 but 1...b5!

1.B×b6! [2.Sc5‡] E
 1...d×e3 2.Q×e3‡ A
 1...Bf3+ 2.Q×f3‡
 1...d3+ 2.c×d3‡
 1...c×b6 2.Sd6‡

Five-folder Pseudo-Le Grand theme in cyclical form. Reciprocal captures.

Source: 017, Sinfonie 123, (January 2016)

Francesco SIMONI
Mémorial J. Tolosa-100, Problemas 2016
1° Prize



8/3Np3/rp1P4/PP2p1n1/2BnkpK1/r1p1P3/1PP2B2/3R1N2

#2 (12+10) C+

1.a×b6? [2.Sc5‡] A

1...e×d6 2.Sf6‡ B

1...Sb3 2.Bd5‡

1...Sde6 2.Bd5‡ but 1...Sge6!

1.d×e7? [2.Sf6‡] B

1...b×a5 2.Sc5‡ A (the 6th line is opened by both the key and the defence)

but 1...Sh7!

1.b×c3? [2.Sd2‡] C

1...f×e3 2.Sg3‡ D

1...Sb3 2.Bd5‡

1...Sdf3 2.Bd5‡

but 1...Sgf3!

1.e×f4! [2.Sg3‡] D

1...c×b2 2.Sd2‡ C (the 3th line is opened by both the key and the defence)

1...e×f4 2.R×d4‡

1...Se2 2.Bd5‡

1...Sf5 2.Bd5‡

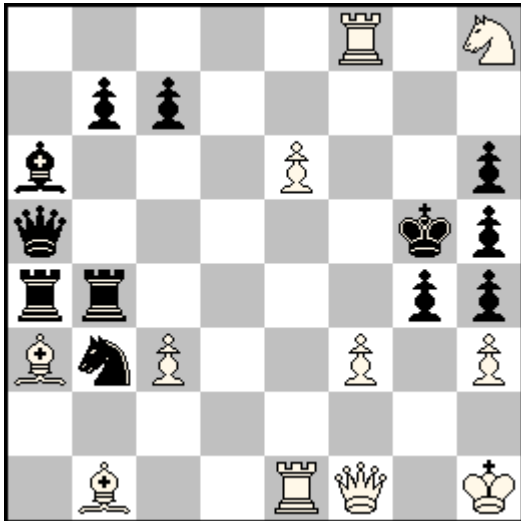
Doubled Pseudo le Grand (AB-BA, CD-DC) and reciprocal captures. Homogeneous refutations by the same piece Sg5.

Source: 178, Problemas 14, (April 2016)

Francesco SIMONI: francesco.chessproblems@gmail.com

Francesco SIMONI

KoBulChess 2016
Commended



5R1N/1pp5/b3P2p/q5kp/rr4pp/BnP2P1P/8/1B2RQ1K

#2 (11+12) C+

1.c4? [2.f4‡]
1...Rxc4 2.Be7‡
1...Qe5 2.Rxe5‡
1...Qf5 2.Rxf5‡
1...gxf3 2.Qg1‡
1...gxh3 2.Qg1‡
but 1...Qd5!

1.Be4? [2.f4‡]
1...Rxe4 2.Be7‡
1...Qf5 2.Rxf5‡
1...gxf3 2.Qg1‡
1...gxh3 2.Qg1‡
but 1...Qe5!

1.Re4? [2.f4‡]
1...Rxe4 2.Be7‡
1...Qe5 2.Rxe5‡
1...gxf3 2.Qg1‡
1...gxh3 2.Qg1‡
but 1...Qf5!

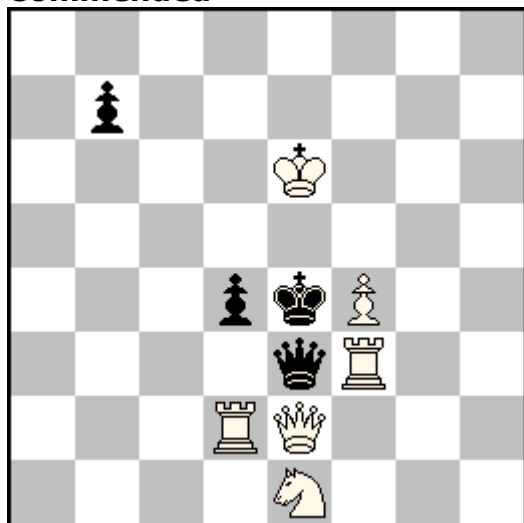
1.Qc4! [2.f4‡]
1...Rxc4 2.Be7‡
1...Qd5 2.Qxd5‡
1...Qe5 2.Rxe5‡
1...Qf5 2.Rxf5‡
1...gxf3 2.Rg1‡
1...gxh3 2.Rg1‡

10° WCCT theme. To threaten 2. f4, white closes a line to Rb4. The first try 1. c4? is refuted by 1...Qd5, because this move pins the wPf3. Next tries prevent the pin, but they fail because of the mutual interference in e4 (white Grimshaw). The key 1.Qc4 prepares a new mate on the pin defence. Note also the changed mate after 1...gxf3(gxh3), to exploit Re1 and Qf1, and the three defences 1...Qd5/Qe5/Qf5 by the bQ.

Source: 750, KoBulChess (16.08.2016)

Francesco SIMONI

186° T.T. SuperProblem 2017
Commended



8/1p6/4K3/8/3pkP2/4qR2/3RQ3/4N3

≠2

(6+4) C+

1...Q×e2 2.R×e2‡

1...d3 2.Q×e3‡

1.Sc2? [2.R×d4‡] A

1...d3 2.Q×e3‡

but 1...Q×e2!

1.Qc4! [2.Qd5‡] B A?

1...Qb3 2.R×d4‡ (Q×d4?)

1...Q×f3 2.Q×d4‡ (R×d4?)

Direct two mover with no more than 10 pieces were required in the T.T.

Threat correction.

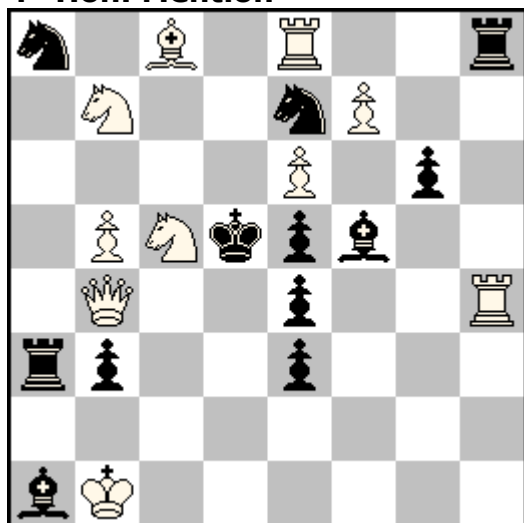
Reciprocal dual avoidance in Actual Play, with two mates in the same square.

Dalton theme.

Award: SuperProblem 12/5/2017

Francesco SIMONI

**Jubileo J. A. Coello 75, Problemas 2017
4° Hon. Mention**



n1B1R2r/1N2nP2/4P1p1/1PNkpb2/1Q2p2R/rp2p3/8/bK6

#2 (10+12) C+

1...Bg4 x 2.Q×e4‡

1...Sg8 y 2.Rd8‡

1.S×e4? [2.Qc5‡] A B?

1...Bg4 x 2.Sf6‡ B

1...B×e4+ 2.Q×e4‡

1...R×h4 2.Rd8‡

but 1...Bd4!

1.Sd7! [2.Sf6‡] B A?

1...Sg8 y 2.Qc5‡ A

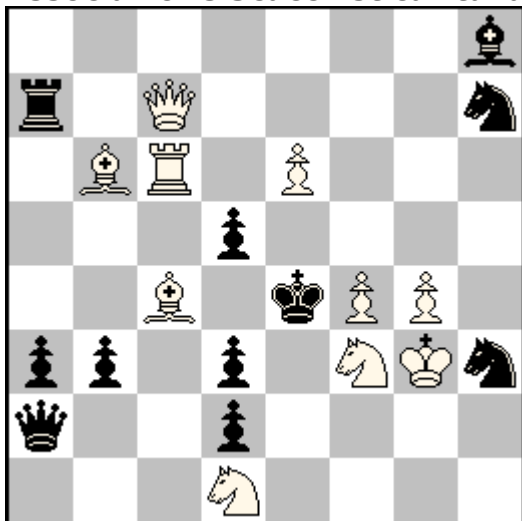
1...K×e6 2.Qc4‡

Set play, Sushkov, Pseudo-Le Grand, flight giving key and pin mate.

Source: 307, Problemas 19 (July 2017)

Francesco SIMONI

Associazione Scacchistica Italiana Giocatori per Corrispondenza 2018



7b/r1Q4n/1BR1P3/3p4/2B1kPP1/pp1p1NKn/q2p4/3N4

1...S×f4 2.Sf2‡

2.Q×f4‡

1...Sf6 2.Sc3‡

2.Qe5‡

1...b2 2.S×d2‡

1.Rc5? [2.B×d5‡]

1...S×f4 2.Q×f4‡

1...Sf6 2.Qe5‡

1...d×c4 2.Qc6‡

but 1...b2!

1.Rd6! [2.B×d5‡]

1...S×f4 2.Sf2‡

1...Sf6 2.Sc3‡

1...Ra5 2.Q×h7‡

1...b2 2.S×d2‡

1...d×c4 2.Qc6‡

Ellerman-Makihovi. The double mates in Set play are separated in the Try and the Actual play due to the white interferences produced by the keys.

Source: D18, ASIGC (June 2018)

Francesco SIMONI: francesco.chessproblems@gmail.com